


# Anti-LKB1 (phospho S428) antibody ab138386

[2 References](#) [2 Images](#)

### Overview

<b>Product name</b>	Anti-LKB1 (phospho S428) antibody
<b>Description</b>	Rabbit polyclonal to LKB1 (phospho S428)
<b>Host species</b>	Rabbit
<b>Tested applications</b>	<b>Suitable for:</b> WB, IHC-P
<b>Species reactivity</b>	<b>Reacts with:</b> Human, African green monkey <b>Predicted to work with:</b> Mouse 
<b>Immunogen</b>	Synthetic peptide corresponding to Human LKB1 (C terminal) (phospho S428).
<b>Positive control</b>	CV-1 cell lysate - forskolin treated; Human breast carcinoma tissue
<b>General notes</b>	<p>The Life Science industry has been in the grips of a reproducibility crisis for a number of years. Abcam is leading the way in addressing this with our range of recombinant monoclonal antibodies and knockout edited cell lines for gold-standard validation. Please check that this product meets your needs before purchasing.</p> <p>If you have any questions, special requirements or concerns, please send us an inquiry and/or contact our Support team ahead of purchase. Recommended alternatives for this product can be found below, along with publications, customer reviews and Q&amp;As</p>

### Properties

<b>Form</b>	Liquid
<b>Storage instructions</b>	Shipped at 4°C. Upon delivery aliquot and store at -20°C. Avoid freeze / thaw cycles.
<b>Storage buffer</b>	<p>pH: 7.40</p> <p>Preservative: 0.02% Sodium azide</p> <p>Constituents: 49.1% PBS, 50% Glycerol, 0.88% Sodium chloride</p> <p>PBS without Mg<sup>2+</sup> or Ca<sup>2+</sup></p>
<b>Purity</b>	Immunogen affinity purified
<b>Purification notes</b>	ab138386 was affinity-purified from rabbit antiserum by affinity-chromatography using epitope-specific phosphopeptide. The antibody against non-phosphopeptide was removed by chromatography using non-phosphopeptide corresponding to the phosphorylation.
<b>Clonality</b>	Polyclonal

Isotype

IgG

## Applications

### The Abpromise guarantee

Our **Abpromise guarantee** covers the use of ab138386 in the following tested applications.

The application notes include recommended starting dilutions; optimal dilutions/concentrations should be determined by the end user.

Application	Abreviews	Notes
WB		1/500 - 1/1000. Predicted molecular weight: 48 kDa.
IHC-P		1/50 - 1/100. Perform heat mediated antigen retrieval with citrate buffer pH 6 before commencing with IHC staining protocol.

## Target

### Function

Essential role in G1 cell cycle arrest. Phosphorylates and activates members of the AMPK-related subfamily of protein kinases. Tumor suppressor.

### Tissue specificity

Ubiquitously expressed. Strongest expression in testis and fetal liver.

### Involvement in disease

Defects in STK11 are a cause of Peutz-Jeghers syndrome (PJS) [MIM:175200]. PJS is a rare hereditary disease in which there is predisposition to benign and malignant tumors of many organ systems. PJS is an autosomal dominant disorder characterized by melanocytic macules of the lips, multiple gastrointestinal hamartomatous polyps and an increased risk for various neoplasms, including gastrointestinal cancer.

Defects in STK11 have been associated with testicular tumors (TEST) [MIM:273300]. A common solid malignancy in males. Germ cell tumors of the testis constitute 95% of all testicular neoplasms.

### Sequence similarities

Belongs to the protein kinase superfamily. CAMK Ser/Thr protein kinase family. LKB1 subfamily. Contains 1 protein kinase domain.

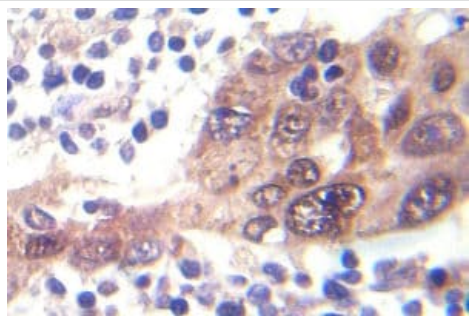
### Post-translational modifications

Phosphorylated by a cAMP-dependent protein kinase.

### Cellular localization

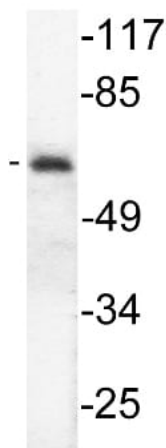
Nucleus. Cytoplasm. Relocates to the cytoplasm when bound to CAB39 and STRAD or CAB39 and ALS2CR2.

## Images



Immunohistochemical analysis of paraffin-embedded Human breast carcinoma tissue labelling LKB1 (phospho S428) with ab138386 at 1/50.

Immunohistochemistry (Formalin/PFA-fixed paraffin-embedded sections) - Anti-LKB1 (phospho S428) antibody - C-terminal (ab138386)



Anti-LKB1 (phospho S428) antibody (ab138386) at 1/500 dilution + CV-1 cell lysate - forskolin treated at 30 µg

**Predicted band size:** 48 kDa

Western blot - Anti-LKB1 (phospho S428) antibody - C-terminal (ab138386)

**Please note:** All products are "FOR RESEARCH USE ONLY. NOT FOR USE IN DIAGNOSTIC PROCEDURES"

### Our Abpromise to you: Quality guaranteed and expert technical support

- Replacement or refund for products not performing as stated on the datasheet
- Valid for 12 months from date of delivery
- Response to your inquiry within 24 hours
- We provide support in Chinese, English, French, German, Japanese and Spanish
- Extensive multi-media technical resources to help you
- We investigate all quality concerns to ensure our products perform to the highest standards

If the product does not perform as described on this datasheet, we will offer a refund or replacement. For full details of the Abpromise, please visit <https://www.abcam.com/abpromise> or contact our technical team.

### Terms and conditions

- Guarantee only valid for products bought direct from Abcam or one of our authorized distributors

