


Product datasheet

Anti-LMAN1 antibody [EPR6980] ab126720

KO VALIDATED Recombinant RabMAb

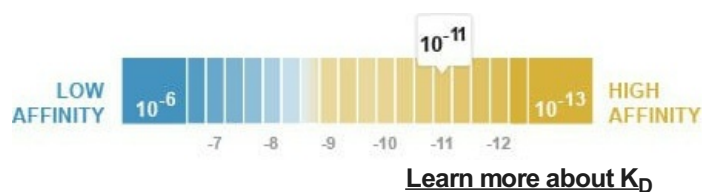
5 Images

Overview

Product name	Anti-LMAN1 antibody [EPR6980]
Description	Rabbit monoclonal [EPR6980] to LMAN1
Host species	Rabbit
Tested applications	Suitable for: WB, IHC-P Unsuitable for: Flow Cyt or IP
Species reactivity	Reacts with: Human Predicted to work with: Mouse, Rat 
Immunogen	Synthetic peptide. This information is proprietary to Abcam and/or its suppliers.
Positive control	WB: HEK-293T, HeLa, NCI-H460 and JAR cell lysates. IHC-P: Papillary adenocarcinoma tissue.
General notes	This product is a recombinant monoclonal antibody, which offers several advantages including: <ul style="list-style-type: none"> - High batch-to-batch consistency and reproducibility - Improved sensitivity and specificity - Long-term security of supply - Animal-free production For more information see here . Our RabMAb® technology is a patented hybridoma-based technology for making rabbit monoclonal antibodies. For details on our patents, please refer to RabMAb® patents .

Properties

Form	Liquid
Storage instructions	Shipped at 4°C. Store at -20°C. Stable for 12 months at -20°C.
Dissociation constant (K _D)	K _D = 9.00 x 10 ⁻¹¹ M



Storage buffer	pH: 7.20
----------------	----------

	Preservative: 0.01% Sodium azide
	Constituents: 9% PBS, 40% Glycerol (glycerin, glycerine), 0.05% BSA, 50% Tissue culture supernatant
Purity	Protein A purified
Clonality	Monoclonal
Clone number	EPR6980
Isotype	IgG

Applications

The Abpromise guarantee Our **Abpromise guarantee** covers the use of ab126720 in the following tested applications. The application notes include recommended starting dilutions; optimal dilutions/concentrations should be determined by the end user.

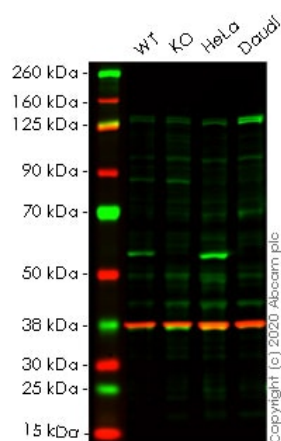
Application	Abreviews	Notes
WB		1/1000 - 1/10000. Predicted molecular weight: 58 kDa.
IHC-P		1/50 - 1/100. Perform heat mediated antigen retrieval with citrate buffer pH 6 before commencing with IHC staining protocol. Antigen retrieval is recommended.

Application notes Is unsuitable for Flow Cyt or IP.

Target

Function	Mannose-specific lectin. May recognize sugar residues of glycoproteins, glycolipids, or glycosylphosphatidyl inositol anchors and may be involved in the sorting or recycling of proteins, lipids, or both. The LMAN1-MCFD2 complex forms a specific cargo receptor for the ER-to-Golgi transport of selected proteins.
Tissue specificity	Ubiquitous.
Involvement in disease	Defects in LMAN1 are THE cause of factor V and factor VIII combined deficiency type 1 (F5F8D1) [MIM:227300]; also known as multiple coagulation factor deficiency I (MCFD1). F5F8D1 is an autosomal recessive blood coagulation disorder characterized by bleeding symptoms similar to those in hemophilia or parahemophilia, that are caused by single deficiency of FV or FVIII, respectively. The most common symptoms are epistaxis, menorrhagia, and excessive bleeding during or after trauma. Plasma levels of coagulation factors V and VIII are in the range of 5 to 30% of normal.
Sequence similarities	Contains 1 L-type lectin-like domain.
Post-translational modifications	The N-terminal may be partly blocked.
Cellular localization	Endoplasmic reticulum-Golgi intermediate compartment membrane. Golgi apparatus membrane. Endoplasmic reticulum membrane.

Images



Western blot - Anti-LMAN1 antibody [EPR6980]
(ab126720)

All lanes : Anti-LMAN1 antibody [EPR6980] (ab126720) at 1/1000 dilution

Lane 1 : Wild-type HEK-293T cell lysate

Lane 2 : LMAN1 knockout HEK-293T cell lysate

Lane 3 : HeLa cell lysate

Lane 4 : Daudi cell lysate

Lysates/proteins at 20 µg per lane.

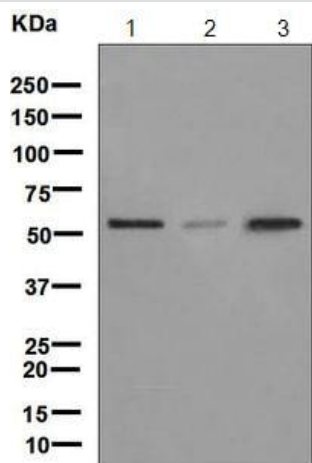
Performed under reducing conditions.

Predicted band size: 58 kDa

Observed band size: 55 kDa

Lanes 1-4: Merged signal (red and green). Green - ab126720 observed at 55 kDa. Red - loading control **ab8245** observed at 37 kDa.

ab126720 Anti-LMAN1 antibody [EPR6980] was shown to specifically react with Protein ERGIC-53 in wild-type HEK-293T cells. Loss of signal was observed when knockout cell line **ab266248** (knockout cell lysate **ab257505**) was used. Wild-type and Protein ERGIC-53 knockout samples were subjected to SDS-PAGE. ab126720 and Anti-GAPDH antibody [6C5] - Loading Control (**ab8245**) were incubated overnight at 4°C at 1 in 1000 Dilution and 1 in 20000 dilution respectively. Blots were developed with Goat anti-Rabbit IgG H&L (IRDye® 800CW) preadsorbed (**ab216773**) and Goat anti-Mouse IgG H&L (IRDye® 680RD) preadsorbed (**ab216776**) secondary antibodies at 1 in 20000 dilution for 1 hour at room temperature before imaging.



Western blot - Anti-LMAN1 antibody [EPR6980]
(ab126720)

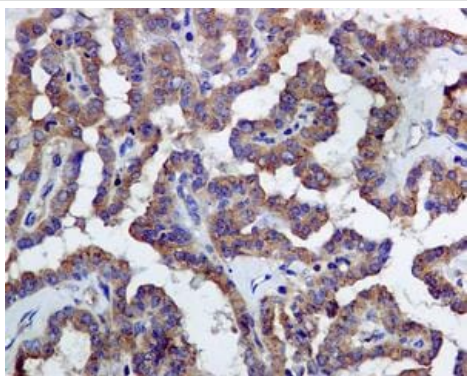
All lanes : Anti-LMAN1 antibody [EPR6980] (ab126720) at 1/1000 dilution

Lane 1 : HeLa cell lysates

Lane 2 : NCI-H460 cell lysates

Lane 3 : JAR cell lysates

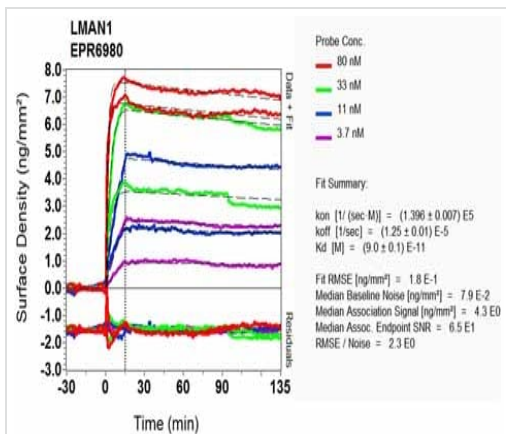
Predicted band size: 58 kDa



Immunohistochemistry (Formalin/PFA-fixed paraffin-embedded sections) - Anti-LMAN1 antibody [EPR6980] (ab126720)

ab126720, at 1/50 dilution, stains LMAN1 in paraffin-embedded papillary adenocarcinoma tissue by immunohistochemistry.

Perform heat mediated antigen retrieval with citrate buffer pH 6 before commencing with IHC staining protocol.



SPR Scanning - Anti-LMAN1 antibody [EPR6980]
(ab126720)

Equilibrium dissociation constant (K_D)

Learn more about K_D

[Click here to learn more about \$K_D\$](#)

Why choose a recombinant antibody?



Research with confidence
Consistent and reproducible results



Long-term and scalable supply
Recombinant technology



Success from the first experiment
Confirmed specificity



Ethical standards compliant
Animal-free production

Anti-LMAN1 antibody [EPR6980] (ab126720)

Please note: All products are "FOR RESEARCH USE ONLY. NOT FOR USE IN DIAGNOSTIC PROCEDURES"

Our Abpromise to you: Quality guaranteed and expert technical support

- Replacement or refund for products not performing as stated on the datasheet
- Valid for 12 months from date of delivery
- Response to your inquiry within 24 hours
- We provide support in Chinese, English, French, German, Japanese and Spanish
- Extensive multi-media technical resources to help you

- We investigate all quality concerns to ensure our products perform to the highest standards

If the product does not perform as described on this datasheet, we will offer a refund or replacement. For full details of the Abpromise, please visit <https://www.abcam.com/abpromise> or contact our technical team.

Terms and conditions

- Guarantee only valid for products bought direct from Abcam or one of our authorized distributors