

Product datasheet

Anti-LMCD1 antibody [EPR11444] α b179454

Recombinant **RabMAb**

[3 References](#) [4 Images](#)

Overview

Product name	Anti-LMCD1 antibody [EPR11444]
Description	Rabbit monoclonal [EPR11444] to LMCD1
Host species	Rabbit
Tested applications	Suitable for: WB, ICC/IF, IP Unsuitable for: IHC-P
Species reactivity	Reacts with: Human
Immunogen	Synthetic peptide within Human LMCD1 aa 200-300 (Cysteine residue). The exact sequence is proprietary. Database link: Q9NZU5
Positive control	WB: Human skeletal muscle lysate. ICC/IF: MCF7 cells. IP: LMCD1 IP in human skeletal muscle lysate.
General notes	<p>This product is a recombinant monoclonal antibody, which offers several advantages including:</p> <ul style="list-style-type: none"> - High batch-to-batch consistency and reproducibility - Improved sensitivity and specificity - Long-term security of supply - Animal-free production <p>For more information see here.</p> <p>Our RabMAb[®] technology is a patented hybridoma-based technology for making rabbit monoclonal antibodies. For details on our patents, please refer to RabMAb[®] patents.</p> <p>Mouse, Rat: We have preliminary internal testing data to indicate this antibody may not react with these species. Please contact us for more information.</p>

Properties

Form	Liquid
Storage instructions	Shipped at 4°C. Store at +4°C short term (1-2 weeks). Upon delivery aliquot. Store at -20°C long term. Avoid freeze / thaw cycle.
Storage buffer	pH: 7.20 Constituents: 0.35% Sodium citrate, 0.17% Sodium chloride, 0.03% EDTA, 59% PBS, 40% Glycerol (glycerin, glycerine), 0.05% BSA

Purity	Protein A purified
Clonality	Monoclonal
Clone number	EPR11444
Isotype	IgG

Applications

The Abpromise guarantee Our **Abpromise guarantee** covers the use of ab179454 in the following tested applications.

The application notes include recommended starting dilutions; optimal dilutions/concentrations should be determined by the end user.

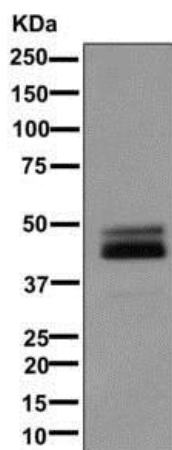
Application	Abreviews	Notes
WB		1/1000 - 1/5000. Predicted molecular weight: 41 kDa.
ICC/IF		1/100 - 1/250.
IP		1/10 - 1/100.

Application notes Is unsuitable for IHC-P.

Target

Function	Transcriptional cofactor that restricts GATA6 function by inhibiting DNA-binding, resulting in repression of GATA6 transcriptional activation of downstream target genes. Represses GATA6-mediated trans activation of lung- and cardiac tissue-specific promoters. Inhibits DNA-binding by GATA4 and GATA1 to the cTNC promoter (By similarity). Plays a critical role in the development of cardiac hypertrophy via activation of calcineurin/nuclear factor of activated T cells signaling pathway.
Tissue specificity	Expressed in the heart (at protein level). Expressed in many tissues with highest abundance in skeletal muscle.
Sequence similarities	Contains 2 LIM zinc-binding domains. Contains 1 PET domain.
Domain	The LIM zinc-binding domains and the Cys-rich region mediate interaction with GATA6.
Cellular localization	Cytoplasm. Nucleus. May shuttle between the cytoplasm and the nucleus.

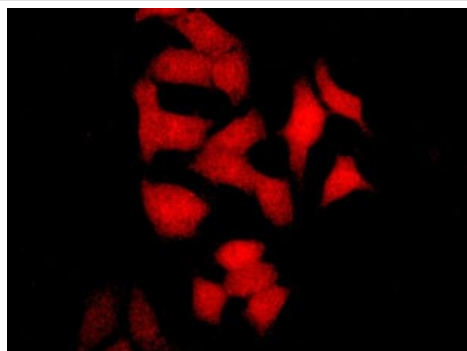
Images



Western blot - Anti-LMCD1 antibody [EPR11444]
(ab179454)

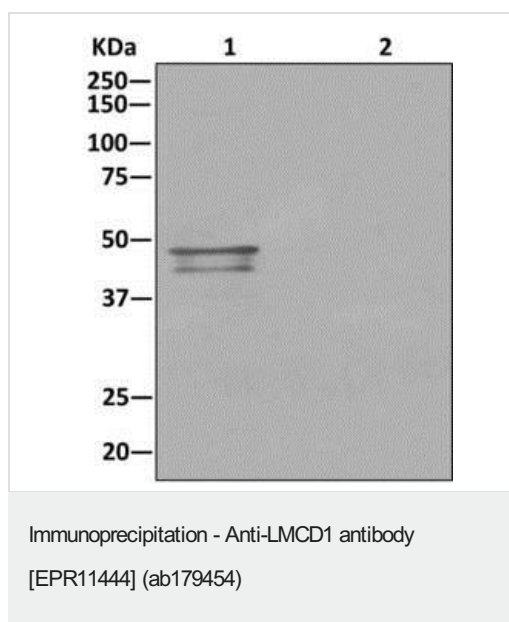
Anti-LMCD1 antibody [EPR11444] (ab179454) at 1/1000 dilution +
Human skeletal muscle lysate at 10 μ g

Predicted band size: 41 kDa







Immunocytochemistry/ Immunofluorescence - Anti-
LMCD1 antibody [EPR11444] (ab179454)

Immunofluorescent analysis of MCF7 (Human breast
adenocarcinoma cell line) cells labeling LMCD1 with ab179454 at
1/100 dilution.



Western blot analysis on immunoprecipitation pellet from (Lane 1) Human skeletal muscle lysate or (Lane 2) 1X PBS (negative control) using ab179454, and HRP-conjugated anti-rabbit IgG preferentially detecting the non-reduced form of rabbit IgG.

Why choose a recombinant antibody?

 <p>Research with confidence Consistent and reproducible results</p>	 <p>Long-term and scalable supply Recombinant technology</p>
 <p>Success from the first experiment Confirmed specificity</p>	 <p>Ethical standards compliant Animal-free production</p>

Anti-LMCD1 antibody [EPR11444] (ab179454)

Please note: All products are "FOR RESEARCH USE ONLY. NOT FOR USE IN DIAGNOSTIC PROCEDURES"

Our Abpromise to you: Quality guaranteed and expert technical support

- Replacement or refund for products not performing as stated on the datasheet
- Valid for 12 months from date of delivery

- Response to your inquiry within 24 hours
- We provide support in Chinese, English, French, German, Japanese and Spanish
- Extensive multi-media technical resources to help you
- We investigate all quality concerns to ensure our products perform to the highest standards

If the product does not perform as described on this datasheet, we will offer a refund or replacement. For full details of the Abpromise, please visit <https://www.abcam.com/abpromise> or contact our technical team.

Terms and conditions

- Guarantee only valid for products bought direct from Abcam or one of our authorized distributors