



Product datasheet

Anti-LMO7 antibody ab224113

★★★★★ [1 Abreviews](#) [6 Images](#)

Overview

| | |
|----------------------------|---|
| Product name | Anti-LMO7 antibody |
| Description | Rabbit polyclonal to LMO7 |
| Host species | Rabbit |
| Tested applications | Suitable for: IHC-P, WB, ICC/IF |
| Species reactivity | Reacts with: Human |
| Immunogen | Recombinant fragment corresponding to Human LMO7 aa 650-850. Database link: Q8WWI1 |
| |  Run BLAST with  Run BLAST with |
| Positive control | WB: HeLa whole cell lysate (ab150035). ICC/IF: A431 cells. IHC-P: Human duodenum, skeletal muscle, testis and uterine cervix tissues. |
| General notes | <p>The Life Science industry has been in the grips of a reproducibility crisis for a number of years. Abcam is leading the way in addressing this with our range of recombinant monoclonal antibodies and knockout edited cell lines for gold-standard validation. Please check that this product meets your needs before purchasing.</p> <p>If you have any questions, special requirements or concerns, please send us an inquiry and/or contact our Support team ahead of purchase. Recommended alternatives for this product can be found below, along with publications, customer reviews and Q&As</p> |

Properties

| | |
|-----------------------------|---|
| Form | Liquid |
| Storage instructions | Shipped at 4°C. Store at +4°C short term (1-2 weeks). Upon delivery aliquot. Store at -20°C long term. Avoid freeze / thaw cycle. |
| Storage buffer | pH: 7.20 Preservative: 0.02% Sodium azide Constituents: 40% Glycerol (glycerin, glycerine), PBS |
| Purity | Immunogen affinity purified |
| Clonality | Polyclonal |
| Isotype | IgG |

Applications

The Abpromise guarantee

Our **Abpromise guarantee** covers the use of ab224113 in the following tested applications.

The application notes include recommended starting dilutions; optimal dilutions/concentrations should be determined by the end user.

| Application | Abreviews | Notes |
|-------------|-----------|---|
| IHC-P | | 1/200 - 1/500. Perform heat mediated antigen retrieval with citrate buffer pH 6 before commencing with IHC staining protocol. |
| WB | | Use a concentration of 0.04 - 0.4 µg/ml. Predicted molecular weight: 154,158,185,191,193 kDa. |
| ICC/IF | | Use a concentration of 0.25 - 2 µg/ml. Fixation/Permeabilization: PFA/Triton X-100. |

Target

Tissue specificity

Widely expressed. Isoform 2 and isoform 4 are predominantly expressed in brain.

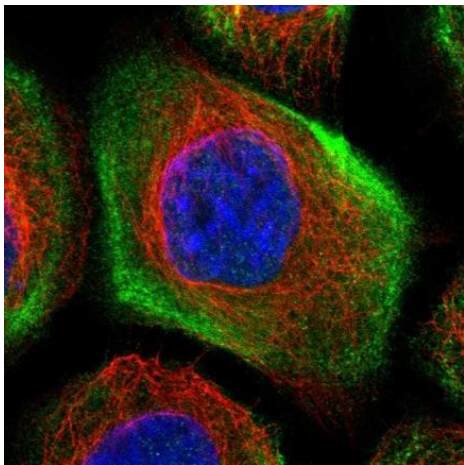
Sequence similarities

Contains 1 CH (calponin-homology) domain.

Contains 1 LIM zinc-binding domain.

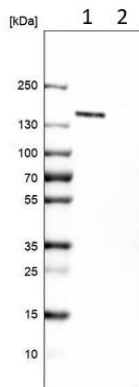
Contains 1 PDZ (DHR) domain.

Images



PFA-fixed, Triton X-100 permeabilized A431 (human epidermoid carcinoma cell line) cells stained for LMO7 (green) using ab224113 at 4 µg/ml in ICC/IF.

Immunocytochemistry/ Immunofluorescence - Anti-LMO7 antibody (ab224113)



Western blot - Anti-LMO7 antibody (ab224113)

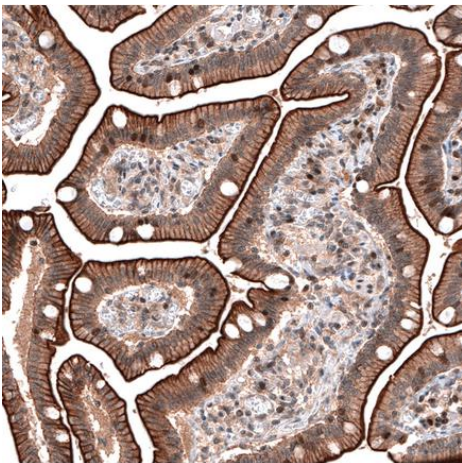
Lane 1 : Anti-LMO7 antibody (ab224113) at 0.4 µg/ml (HeLa cell lysate)

Lane 2 : Anti-LMO7 antibody (ab224113) at 0.4 µg/ml (HEK-293 lysate)

All lanes :

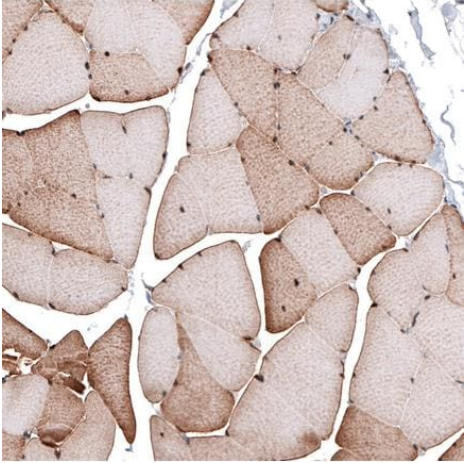
Predicted band size: 154,158,185,191,193 kDa

Western blot analysis of HeLa cell lysate using ab224113 at 0.4 µg/ml.



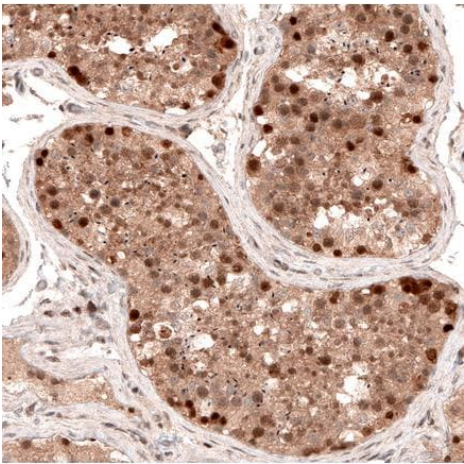
Immunohistochemistry (Formalin/PFA-fixed paraffin-embedded sections) - Anti-LMO7 antibody (ab224113)

Paraffin-embedded human duodenum tissue stained for LMO7 using ab224113 at 1/200 dilution in immunohistochemical analysis.



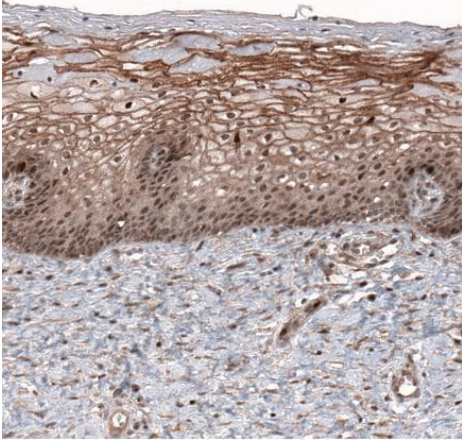
Paraffin-embedded human skeletal muscle tissue stained for LMO7 using ab224113 at 1/200 dilution in immunohistochemical analysis.

Immunohistochemistry (Formalin/PFA-fixed paraffin-embedded sections) - Anti-LMO7 antibody (ab224113)



Paraffin-embedded human testis tissue stained for LMO7 using ab224113 at 1/200 dilution in immunohistochemical analysis.

Immunohistochemistry (Formalin/PFA-fixed paraffin-embedded sections) - Anti-LMO7 antibody (ab224113)



Paraffin-embedded human uterine cervix tissue stained for LMO7 using ab224113 at 1/200 dilution in immunohistochemical analysis.

Immunohistochemistry (Formalin/PFA-fixed paraffin-embedded sections) - Anti-LMO7 antibody (ab224113)

Please note: All products are "FOR RESEARCH USE ONLY. NOT FOR USE IN DIAGNOSTIC PROCEDURES"

Our Abpromise to you: Quality guaranteed and expert technical support

- Replacement or refund for products not performing as stated on the datasheet
- Valid for 12 months from date of delivery
- Response to your inquiry within 24 hours
- We provide support in Chinese, English, French, German, Japanese and Spanish
- Extensive multi-media technical resources to help you
- We investigate all quality concerns to ensure our products perform to the highest standards

If the product does not perform as described on this datasheet, we will offer a refund or replacement. For full details of the Abpromise, please visit <https://www.abcam.com/abpromise> or contact our technical team.

Terms and conditions

- Guarantee only valid for products bought direct from Abcam or one of our authorized distributors