

Product datasheet

Anti-LRG1/LRG antibody [EPR12362] ab178698

Recombinant RabMAb

[1 Abreviews](#) [10 References](#) [5 Images](#)

Overview

Product name	Anti-LRG1/LRG antibody [EPR12362]
Description	Rabbit monoclonal [EPR12362] to LRG1/LRG
Host species	Rabbit
Tested applications	Suitable for: WB, IHC-P Unsuitable for: ICC/IF
Species reactivity	Reacts with: Human Does not react with: Mouse, Rat
Immunogen	Synthetic peptide. This information is proprietary to Abcam and/or its suppliers.
Positive control	WB: Human plasma and Human serum lysates;. IHC-P: human liver carcinoma and lung tissue.
General notes	This product is a recombinant monoclonal antibody, which offers several advantages including: <ul style="list-style-type: none"> - High batch-to-batch consistency and reproducibility - Improved sensitivity and specificity - Long-term security of supply - Animal-free production For more information see here . Our RabMAb [®] technology is a patented hybridoma-based technology for making rabbit monoclonal antibodies. For details on our patents, please refer to RabMAb[®] patents .

Properties

Form	Liquid
Storage instructions	Shipped at 4°C. Store at +4°C short term (1-2 weeks). Upon delivery aliquot. Store at -20°C long term. Avoid freeze / thaw cycle.
Storage buffer	Preservative: 0.01% Sodium azide Constituents: PBS, 40% Glycerol (glycerin, glycerine), 0.05% BSA
Purity	Protein A purified
Clonality	Monoclonal
Clone number	EPR12362
Isotype	IgG

Applications

The Abpromise guarantee

Our **Abpromise guarantee** covers the use of ab178698 in the following tested applications.

The application notes include recommended starting dilutions; optimal dilutions/concentrations should be determined by the end user.

Application	Abreviews	Notes
WB		1/1000 - 1/10000. Detects a band of approximately 50 kDa (predicted molecular weight: 38 kDa).
IHC-P		1/100 - 1/250. Perform heat mediated antigen retrieval before commencing with IHC staining protocol. See <u>IHC antigen retrieval protocols</u> .

Application notes

Is unsuitable for ICC/IF.

Target

Tissue specificity

Plasma.

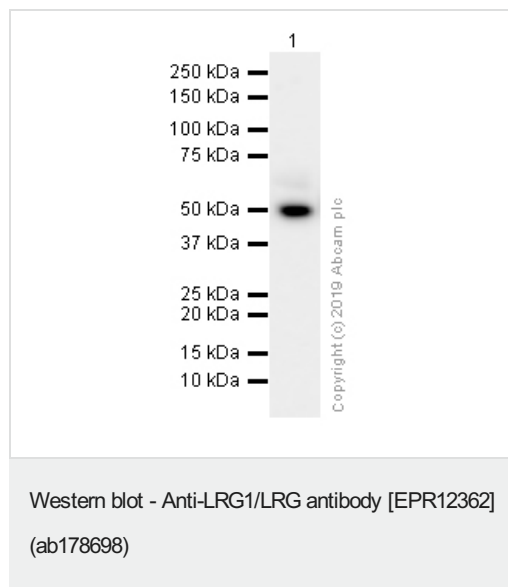
Sequence similarities

Contains 8 LRR (leucine-rich) repeats.
Contains 1 LRRCT domain.

Cellular localization

Secreted.

Images



Anti-LRG1/LRG antibody [EPR12362] (ab178698) at 1/10000 dilution (Purified) + Human plasma lysates at 15 µg

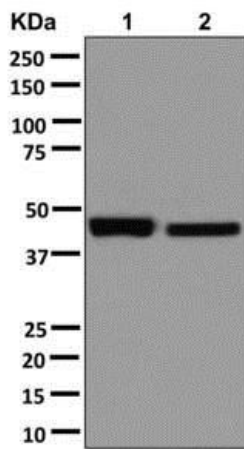
Secondary

Goat Anti-Rabbit IgG (HRP) with minimal cross-reactivity with human IgG at 1/2000 dilution

Predicted band size: 38 kDa

Observed band size: 50 kDa

The band observed is consistent with what has been described in PMID: 28081565



Western blot - Anti-LRG1/LRG antibody [EPR12362] (ab178698)

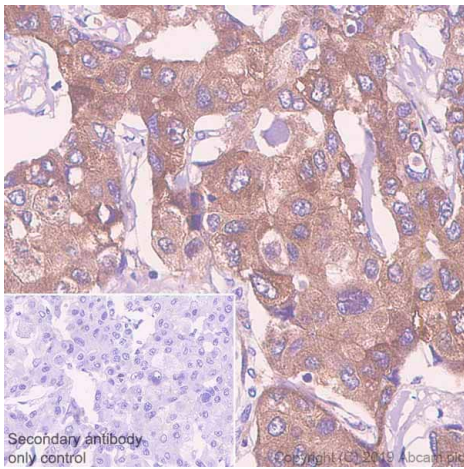
All lanes : Anti-LRG1/LRG antibody [EPR12362] (ab178698) at 1/1000 dilution ((unpurified))

Lane 1 : Human plasma lysate

Lane 2 : Human serum lysate

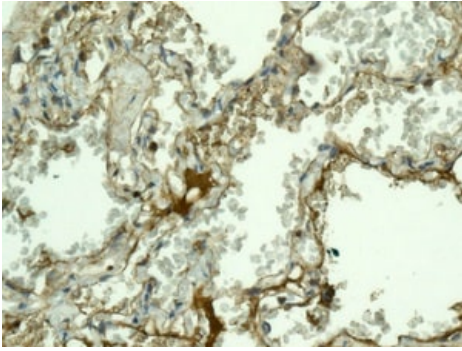
Lysates/proteins at 10 µg per lane.

Predicted band size: 38 kDa



Immunohistochemistry (Formalin/PFA-fixed paraffin-embedded sections) - Anti-LRG1/LRG antibody [EPR12362] (ab178698)

Immunohistochemistry (Formalin/PFA-fixed paraffin-embedded sections) analysis of human liver carcinoma tissue sections labeling LRG1/LRG with purified ab178698 at 1/200 dilution (0.57 µg/ml). Heat mediated antigen retrieval using Bond™ Epitope Retrieval Solution 1 (pH 6.0). Rabbit specific IHC polymer detection kit HRP/DAB (**ab209101**) was used as the secondary antibody. Negative control: PBS instead of the primary antibody. Hematoxylin was used as a counterstain.



Immunohistochemical analysis of paraffin-embedded Human lung tissue labeling LRG1/LRG with unpurified ab178698 at 1/100 dilution.

Perform heat mediated antigen retrieval before commencing with IHC staining protocol.

Immunohistochemistry (Formalin/PFA-fixed paraffin-embedded sections) - Anti-LRG1/LRG antibody [EPR12362] (ab178698)

Why choose a recombinant antibody?



Anti-LRG1/LRG antibody [EPR12362] (ab178698)

Please note: All products are "FOR RESEARCH USE ONLY. NOT FOR USE IN DIAGNOSTIC PROCEDURES"

Our Abpromise to you: Quality guaranteed and expert technical support

- Replacement or refund for products not performing as stated on the datasheet
- Valid for 12 months from date of delivery
- Response to your inquiry within 24 hours
- We provide support in Chinese, English, French, German, Japanese and Spanish
- Extensive multi-media technical resources to help you
- We investigate all quality concerns to ensure our products perform to the highest standards

If the product does not perform as described on this datasheet, we will offer a refund or replacement. For full details of the Abpromise, please visit <https://www.abcam.com/abpromise> or contact our technical team.

Terms and conditions

- Guarantee only valid for products bought direct from Abcam or one of our authorized distributors