


Anti-Lrp2 / Megalin antibody ab76969

★★★★★ [23 Abreviews](#) [41 References](#) [4 Images](#)

Overview

Product name	Anti-Lrp2 / Megalin antibody
Description	Rabbit polyclonal to Lrp2 / Megalin
Host species	Rabbit
Tested applications	Suitable for: IHC-P
Species reactivity	Reacts with: Mouse, Rat, Human, Monkey Predicted to work with: Xenopus laevis 
Immunogen	Synthetic peptide corresponding to Human Lrp2/ Megalin aa 4600 to the C-terminus (C terminal). (Peptide available as ab101417)
Positive control	IHC-P: Mouse kidney and human kidney carcinoma tissues.
General notes	<p>The Life Science industry has been in the grips of a reproducibility crisis for a number of years. Abcam is leading the way in addressing this with our range of recombinant monoclonal antibodies and knockout edited cell lines for gold-standard validation. Please check that this product meets your needs before purchasing.</p> <p>If you have any questions, special requirements or concerns, please send us an inquiry and/or contact our Support team ahead of purchase. Recommended alternatives for this product can be found below, along with publications, customer reviews and Q&As</p>

Properties

Form	Liquid
Storage instructions	Shipped at 4°C. Store at +4°C short term (1-2 weeks). Upon delivery aliquot. Store at -20°C or -80°C. Avoid freeze / thaw cycle.
Storage buffer	pH: 7.40 Preservative: 0.02% Sodium azide Constituent: PBS Batches of this product that have a concentration < 1mg/ml may have BSA added as a stabilising agent. If you would like information about the formulation of a specific lot, please contact our scientific support team who will be happy to help.
Purity	Immunogen affinity purified
Clonality	Polyclonal

Isotype

IgG

Applications

The Abpromise guarantee

Our **Abpromise guarantee** covers the use of ab76969 in the following tested applications.

The application notes include recommended starting dilutions; optimal dilutions/concentrations should be determined by the end user.

Application	Abreviews	Notes
IHC-P	★★★★★ (9)	Use a concentration of 1 µg/ml. Perform heat mediated antigen retrieval with citrate buffer pH 6 before commencing with IHC staining protocol.

Target

Function

Acts together with cubilin to mediate HDL endocytosis (By similarity). May participate in regulation of parathyroid-hormone and para-thyroid-hormone-related protein release.

Tissue specificity

Absorptive epithelia, including renal proximal tubules.

Involvement in disease

Defects in LRP2 are the cause of Donnai-Barrow syndrome (DBS) [MIM:222448]; also known as faciooculoacousticorenal syndrome (FOAR syndrome). DBS is a rare autosomal recessive disorder characterized by major malformations including agenesis of the corpus callosum, congenital diaphragmatic hernia, facial dysmorphology, ocular anomalies, sensorineural hearing loss and developmental delay. The FOAR syndrome was first described as comprising facial anomalies, ocular anomalies, sensorineural hearing loss, and proteinuria. DBS and FOAR were first described as distinct disorders but the classic distinguishing features between the 2 disorders were presence of proteinuria and absence of diaphragmatic hernia and corpus callosum anomalies in FOAR. Early reports noted that the 2 disorders shared many phenotypic features and may be identical. Although there is variability in the expression of some features (e.g. agenesis of the corpus callosum and proteinuria), DBS and FOAR are now considered to represent the same entity.

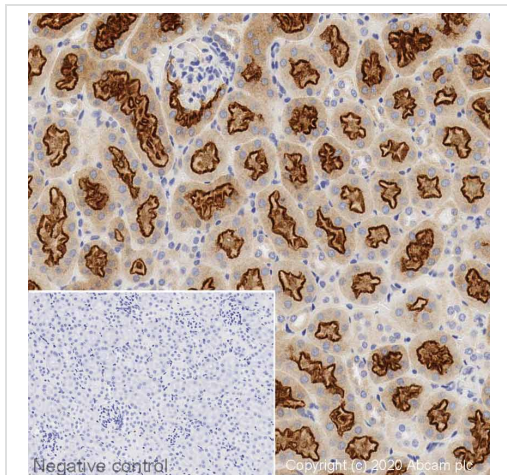
Sequence similarities

Belongs to the LDLR family.
Contains 17 EGF-like domains.
Contains 36 LDL-receptor class A domains.
Contains 37 LDL-receptor class B repeats.

Cellular localization

Membrane. Membrane > coated pit.

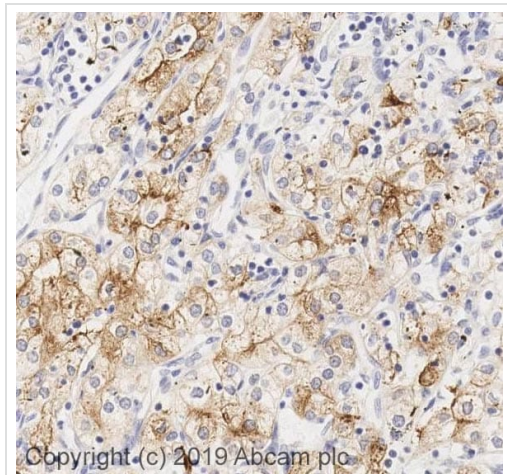
Images



Immunohistochemistry (Formalin/PFA-fixed paraffin-embedded sections) - Anti-Lrp2 / Megalin antibody (ab76969)

IHC image of Lrp2 / Megalin staining in normal Mouse Kidney formalin fixed paraffin embedded tissue section, performed on a Leica Bond™ system using the standard protocol F. The section was pre-treated using heat mediated antigen retrieval with sodium citrate buffer (pH6, epitope retrieval solution 1) for 20 mins. The section was then incubated with ab76969, 1 µg/ml, for 15 mins at room temperature and detected using an HRP conjugated compact polymer system. DAB was used as the chromogen. The section was then counterstained with haematoxylin and mounted with DPX.

For other IHC staining systems (automated and non-automated) customers should optimize variable parameters such as antigen retrieval conditions, primary antibody concentration and antibody incubation times.

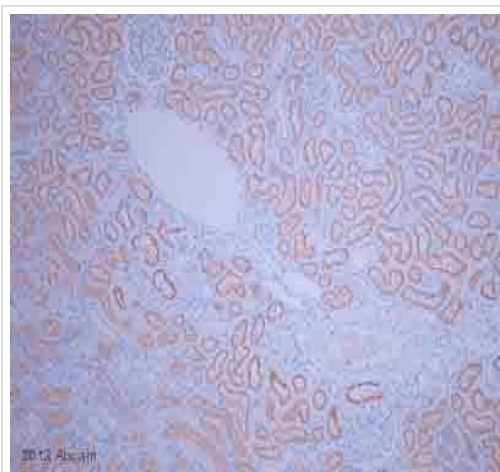


Immunohistochemistry (Formalin/PFA-fixed paraffin-embedded sections) - Anti-Lrp2 / Megalin antibody (ab76969)

IHC image of Lrp2/Megalin antibody staining in a section of formalin-fixed paraffin-embedded human kidney renal carcinoma* performed on a Leica BOND™ system using the standard protocol. The section was pre-treated using heat mediated antigen retrieval with sodium citrate buffer (pH6, epitope retrieval solution 1) for 20mins. The section was then incubated with ab76969, 1ug/ml, for 15 mins at room temperature and detected using an HRP conjugated compact polymer system. DAB was used as the chromogen. The section was then counterstained with haematoxylin and mounted with DPX.

For other IHC staining systems (automated and non-automated) customers should optimize variable parameters such as antigen retrieval conditions, primary antibody concentration and antibody incubation times.

**Tissue obtained from the Human Research Tissue Bank, supported by the NIHR Cambridge Biomedical Research Centre*

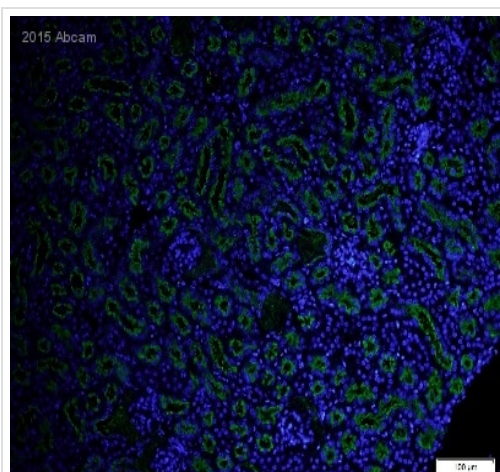


Immunohistochemistry (Formalin/PFA-fixed paraffin-embedded sections) - Anti-Lrp2 / Megalin antibody (ab76969)

Image courtesy of an anonymous Abreview.

ab76969 staining Lrp2 / Megalin in monkey kidney tissue by Immunohistochemistry (Formalin/PFA-fixed paraffin-embedded sections).

Tissue was fixed in formaldehyde and a heat mediated antigen retrieval step was performed using citrate pH 6.0. Samples were then incubated with ab76969 at 1µg/ml for 1 hour with BSA in TBS. The secondary used was an undiluted HRP conjugated goat anti-rabbit polyclonal.



Immunohistochemistry (Formalin/PFA-fixed paraffin-embedded sections) - Anti-Lrp2 / Megalin antibody (ab76969)

This image is courtesy of an anonymous Abreview.

ab76969 staining Lrp2 / Megalin in mouse kidney tissue sections by Immunohistochemistry (PFA perfusion fixed frozen sections).

Tissue samples were fixed by perfusion with paraformaldehyde, blocked for 60 minutes at 25°C and antigen retrieval was by heat mediation. The sample was incubated with primary antibody (1/1000) at 25°C for 1 hour. An Alexa Fluor® 488-conjugated donkey rabbit polyclonal (1/1200) was used as the secondary antibody.

Please note: All products are "FOR RESEARCH USE ONLY. NOT FOR USE IN DIAGNOSTIC PROCEDURES"

Our Abpromise to you: Quality guaranteed and expert technical support

- Replacement or refund for products not performing as stated on the datasheet
- Valid for 12 months from date of delivery
- Response to your inquiry within 24 hours

- We provide support in Chinese, English, French, German, Japanese and Spanish
- Extensive multi-media technical resources to help you
- We investigate all quality concerns to ensure our products perform to the highest standards

If the product does not perform as described on this datasheet, we will offer a refund or replacement. For full details of the Abpromise, please visit <https://www.abcam.com/abpromise> or contact our technical team.

Terms and conditions

- Guarantee only valid for products bought direct from Abcam or one of our authorized distributors