




## Product datasheet

### Anti-LRP4 antibody ab224253

1 Image

#### Overview

Product name	Anti-LRP4 antibody
Description	Rabbit polyclonal to LRP4
Host species	Rabbit
Tested applications	<b>Suitable for:</b> IHC-P
Species reactivity	<b>Reacts with:</b> Human <b>Predicted to work with:</b> Mouse, Rat 
Immunogen	Recombinant fragment corresponding to Human LRP4 aa 1750-1900. Database link: <a href="#">O75096</a>  <a href="#">Run BLAST with</a>  <a href="#">Run BLAST with</a>
Positive control	IHC: Human pancreas tissue.
General notes	<p>The Life Science industry has been in the grips of a reproducibility crisis for a number of years. Abcam is leading the way in addressing this with our range of recombinant monoclonal antibodies and knockout edited cell lines for gold-standard validation. Please check that this product meets your needs before purchasing.</p> <p>If you have any questions, special requirements or concerns, please send us an inquiry and/or contact our Support team ahead of purchase. Recommended alternatives for this product can be found below, along with publications, customer reviews and Q&amp;As</p>

#### Properties

Form	Liquid
Storage instructions	Shipped at 4°C. Store at +4°C short term (1-2 weeks). Upon delivery aliquot. Store at -20°C long term. Avoid freeze / thaw cycle.
Storage buffer	pH: 7.20 Preservative: 0.02% Sodium azide Constituents: 40% Glycerol (glycerin, glycerine), PBS
Purity	Immunogen affinity purified
Clonality	Polyclonal
Isotype	IgG

## Applications

### The Abpromise guarantee

Our **Abpromise guarantee** covers the use of ab224253 in the following tested applications.

The application notes include recommended starting dilutions; optimal dilutions/concentrations should be determined by the end user.

Application	Abreviews	Notes
IHC-P		1/200 - 1/500. Perform heat mediated antigen retrieval with citrate buffer pH 6 before commencing with IHC staining protocol.

## Target

### Function

Potential cell surface endocytic receptor, which binds and internalizes extracellular ligands for degradation by lysosomes. Involved in the negative regulation of the canonical Wnt signaling pathway, being able to antagonize the LRP6-mediated activation of this pathway.

### Tissue specificity

Expressed in several regions of the brain.

### Involvement in disease

Defects in LRP4 are the cause of Cenani-Lenz syndactyly syndrome (CLSS) [MIM:212780]. It is a congenital malformation syndrome defined as complete and complex syndactyly of the hands combined with malformations of the forearm bones and similar manifestations in the lower limbs.

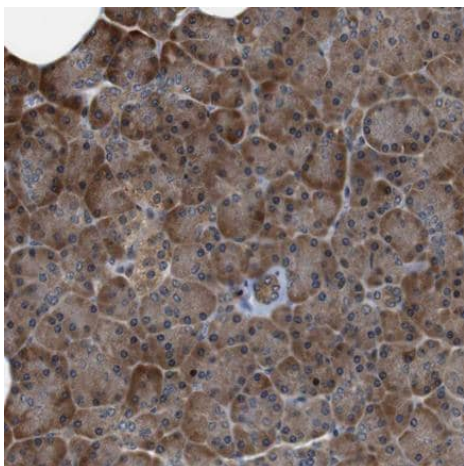
### Sequence similarities

Belongs to the LDLR family.  
Contains 3 EGF-like domains.  
Contains 8 LDL-receptor class A domains.  
Contains 20 LDL-receptor class B repeats.

### Cellular localization

Membrane.

## Images



Paraffin-embedded human pancreas tissue stained for LRP4 using ab224253 at 1/200 dilution in immunohistochemical analysis.

Immunohistochemistry (Formalin/PFA-fixed paraffin-embedded sections) - Anti-LRP4 antibody (ab224253)

**Please note:** All products are "FOR RESEARCH USE ONLY. NOT FOR USE IN DIAGNOSTIC PROCEDURES"

### **Our Abpromise to you: Quality guaranteed and expert technical support**

---

- Replacement or refund for products not performing as stated on the datasheet
- Valid for 12 months from date of delivery
- Response to your inquiry within 24 hours
  
- We provide support in Chinese, English, French, German, Japanese and Spanish
- Extensive multi-media technical resources to help you
- We investigate all quality concerns to ensure our products perform to the highest standards

If the product does not perform as described on this datasheet, we will offer a refund or replacement. For full details of the Abpromise, please visit <https://www.abcam.com/abpromise> or contact our technical team.

### **Terms and conditions**

---

- Guarantee only valid for products bought direct from Abcam or one of our authorized distributors