

Product datasheet

Anti-LRPAP1 antibody [EPR3327] ab76500

Recombinant **RabMAb**

[1 References](#) [8 Images](#)

Overview

Product name	Anti-LRPAP1 antibody [EPR3327]
Description	Rabbit monoclonal [EPR3327] to LRPAP1
Host species	Rabbit
Tested applications	Suitable for: IP, IHC-P, WB Unsuitable for: Flow Cyt or ICC/IF
Species reactivity	Reacts with: Mouse, Rat, Human
Immunogen	Synthetic peptide within Human LRPAP1 aa 1-100. The exact sequence is proprietary.
Positive control	WB: Human fetal kidney, mouse kidney and rat kidney tissue lysate and 293T cell lysates. IHC-P: Human hepatocellular carcinoma and brain tissues. IP: Human fetal kidney tissue lysate.
General notes	<p>This product is a recombinant monoclonal antibody, which offers several advantages including:</p> <ul style="list-style-type: none"> - High batch-to-batch consistency and reproducibility - Improved sensitivity and specificity - Long-term security of supply - Animal-free production <p>For more information see here.</p> <p>Our RabMAb[®] technology is a patented hybridoma-based technology for making rabbit monoclonal antibodies. For details on our patents, please refer to RabMAb[®] patents.</p>

Properties

Form	Liquid
Storage instructions	Shipped at 4°C. Store at +4°C short term (1-2 weeks). Upon delivery aliquot. Store at -20°C. Avoid freeze / thaw cycle.
Storage buffer	pH: 7.20 Preservative: 0.01% Sodium azide Constituents: 59% PBS, 40% Glycerol (glycerin, glycerine), 0.05% BSA
Purity	Protein A purified
Clonality	Monoclonal
Clone number	EPR3327

Isotype

IgG

Applications

The Abpromise guarantee

Our **Abpromise guarantee** covers the use of ab76500 in the following tested applications.

The application notes include recommended starting dilutions; optimal dilutions/concentrations should be determined by the end user.

Application	Abreviews	Notes
IP		1/50 - 1/200.
IHC-P		1/100 - 1/200. Perform heat mediated antigen retrieval before commencing with IHC staining protocol.
WB		1/1000 - 1/10000. Predicted molecular weight: 41 kDa.

Application notes

Is unsuitable for Flow Cyt or ICC/IF.

Target

Function

Interacts with LRP1/alpha-2-macroglobulin receptor and glycoprotein 330.

Involvement in disease

Note=In complex with the alpha-2-MR or gp330, it may have some role in the pathogenesis of membrane glomerular nephritis.

Sequence similarities

Belongs to the alpha-2-MRAP family.

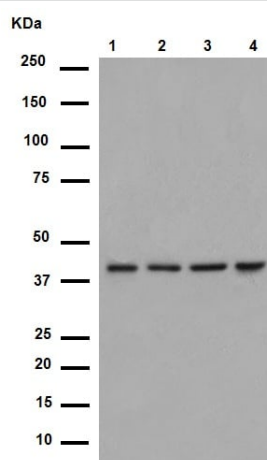
Post-translational modifications

N-glycosylated.

Cellular localization

Endoplasmic reticulum. Cytoplasm. Cell surface. Intracellular and associated with cell surface receptors. Found in the endoplasmic reticulum.

Images



Western blot - Anti-LRPAP1 antibody [EPR3327]
(ab76500)

All lanes : Anti-LRPAP1 antibody [EPR3327] (ab76500) at 1/6000 dilution (unpurified)

Lane 1 : Human fetal kidney tissue lysate

Lane 2 : Mouse kidney tissue lysate

Lane 3 : Rat kidney tissue lysate

Lane 4 : 293T cell lysate

Lysates/proteins at 10 µg per lane.

Secondary

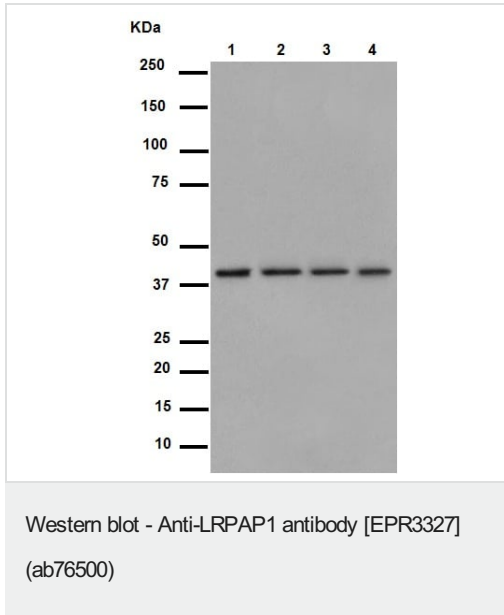
All lanes : Peroxidase-conjugated goat anti-rabbit IgG at 1/1000 dilution

Predicted band size: 41 kDa

Observed band size: 45 kDa

Blocking buffer and concentration: 5% NFDM/TBST.

Diluting buffer and concentration: 5% NFDM /TBST



All lanes : Anti-LRPAP1 antibody [EPR3327] (ab76500) at 1/3000 dilution (purified)

Lane 1 : Human fetal kidney tissue lysate

Lane 2 : Mouse kidney tissue lysate

Lane 3 : Rat kidney tissue lysate

Lane 4 : 293T cell lysate

Lysates/proteins at 10 µg per lane.

Secondary

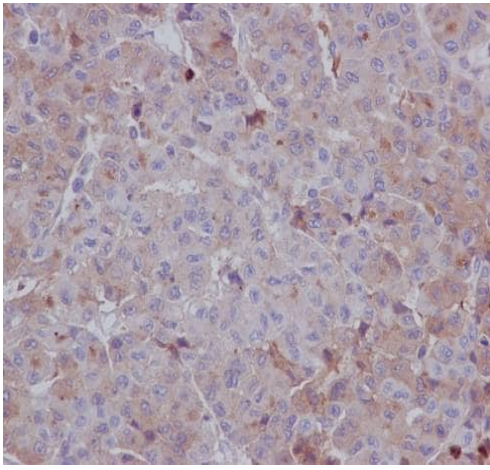
All lanes : Peroxidase-conjugated goat anti-rabbit IgG at 1/1000 dilution

Predicted band size: 41 kDa

Observed band size: 45 kDa

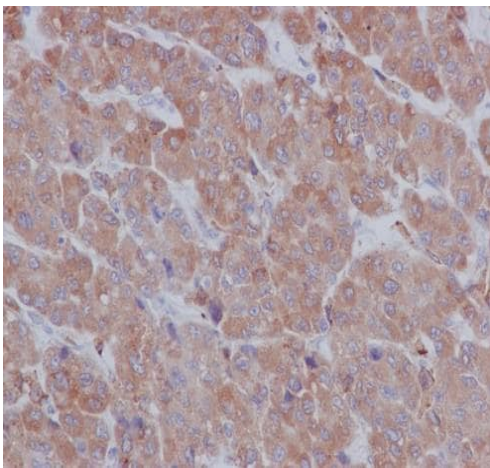
Blocking buffer and concentration: 5% NFDM/TBST.

Diluting buffer and concentration: 5% NFDM /TBST



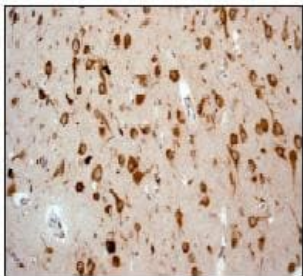
Immunohistochemistry (Formalin/PFA-fixed paraffin-embedded sections) - Anti-LRPAP1 antibody
[EPR3327] (ab76500)

Immunohistochemistry (Formalin/PFA-fixed paraffin-embedded sections) analysis of human hepatocellular carcinoma tissue labelling LRPAP1 with unpurified ab76500 at 1/200. Heat mediated antigen retrieval was performed using Tris/EDTA buffer pH 9. A prediluted HRP-polymer conjugated anti-rabbit IgG was used as the secondary antibody. Counterstained with Hematoxylin.



Immunohistochemistry (Formalin/PFA-fixed paraffin-embedded sections) - Anti-LRPAP1 antibody
[EPR3327] (ab76500)

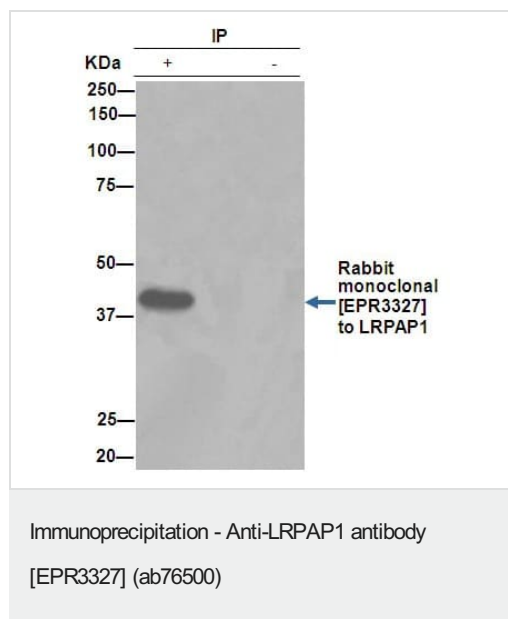
Immunohistochemistry (Formalin/PFA-fixed paraffin-embedded sections) analysis of human hepatocellular carcinoma tissue labelling LRPAP1 with purified ab76500 at 1/100. Heat mediated antigen retrieval was performed using Tris/EDTA buffer pH 9. A prediluted HRP-polymer conjugated anti-rabbit IgG was used as the secondary antibody. Counterstained with Hematoxylin.



Immunohistochemistry (Formalin/PFA-fixed paraffin-embedded sections) - Anti-LRPAP1 antibody
[EPR3327] (ab76500)

Immunohistochemistry (Formalin/PFA-fixed paraffin-embedded sections) analysis of human brain tissue labelling LRPAP1 with unpurified ab76500 at a 1/100 dilution.

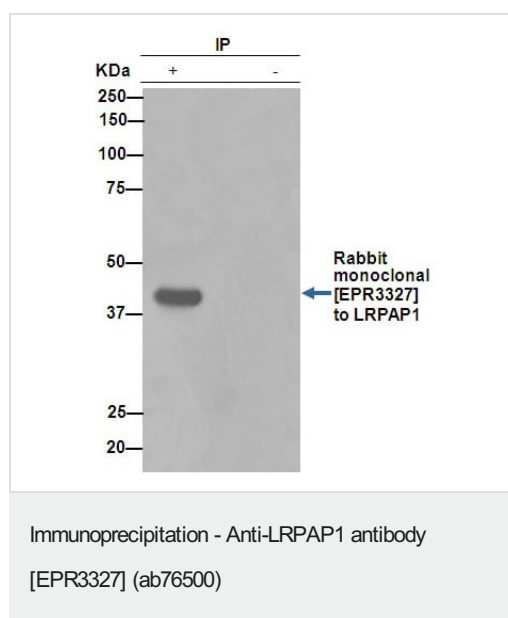
Perform heat mediated antigen retrieval before commencing with IHC staining protocol.



ab76500 (unpurified) at 1/300 immunoprecipitating LRPAP1 in human fetal kidney tissue lysate (Lane 1). Lane 2 - PBS. For western blotting, a HRP-conjugated anti-rabbit IgG, specific to the non-reduced form of IgG was used as the secondary antibody (1/1500).

Blocking buffer and concentration: 5% NFDM/TBST.

Diluting buffer and concentration: 5% NFDM /TBST.



ab76500 (purified) at 1/150 immunoprecipitating LRPAP1 in human fetal kidney tissue lysate (Lane 1). Lane 2 - PBS. For western blotting, a HRP-conjugated anti-rabbit IgG, specific to the non-reduced form of IgG was used as the secondary antibody (1/1500).

Blocking buffer and concentration: 5% NFDM/TBST.

Diluting buffer and concentration: 5% NFDM /TBST.

Why choose a recombinant antibody?

Research with confidence
Consistent and reproducible results

Long-term and scalable supply
Recombinant technology

Success from the first experiment
Confirmed specificity

Ethical standards compliant
Animal-free production

Anti-LRPAP1 antibody [EPR3327] (ab76500)

Please note: All products are "FOR RESEARCH USE ONLY. NOT FOR USE IN DIAGNOSTIC PROCEDURES"

Our Abpromise to you: Quality guaranteed and expert technical support

- Replacement or refund for products not performing as stated on the datasheet
- Valid for 12 months from date of delivery
- Response to your inquiry within 24 hours

- We provide support in Chinese, English, French, German, Japanese and Spanish
- Extensive multi-media technical resources to help you
- We investigate all quality concerns to ensure our products perform to the highest standards

If the product does not perform as described on this datasheet, we will offer a refund or replacement. For full details of the Abpromise, please visit <https://www.abcam.com/abpromise> or contact our technical team.

Terms and conditions

- Guarantee only valid for products bought direct from Abcam or one of our authorized distributors