


Anti-LRPPRC/GP130 antibody ab97505

★★★★★ [1 Abreviews](#) [13 References](#) [4 Images](#)

Overview

| | |
|----------------------------|---|
| Product name | Anti-LRPPRC/GP130 antibody |
| Description | Rabbit polyclonal to LRPPRC/GP130 |
| Host species | Rabbit |
| Tested applications | Suitable for: WB, IHC-P, ICC/IF |
| Species reactivity | Reacts with: Human Predicted to work with: Rat  |
| Immunogen | Recombinant fragment corresponding to Human LRPPRC/GP130 aa 611-907. Database link: P42704 |
| Positive control | WB: H1299, HeLa whole cell lysate. IHC-P: SW480 Xenograft, human colon cancer tissue. ICC/IF: HeLa cells |
| General notes | <p>The Life Science industry has been in the grips of a reproducibility crisis for a number of years. Abcam is leading the way in addressing this with our range of recombinant monoclonal antibodies and knockout edited cell lines for gold-standard validation. Please check that this product meets your needs before purchasing.</p> <p>If you have any questions, special requirements or concerns, please send us an inquiry and/or contact our Support team ahead of purchase. Recommended alternatives for this product can be found below, along with publications, customer reviews and Q&As</p> |

Properties

| | |
|-----------------------------|--|
| Form | Liquid |
| Storage instructions | Shipped at 4°C. Store at +4°C short term (1-2 weeks). Upon delivery aliquot. Store at -20°C or -80°C. Avoid freeze / thaw cycle. |
| Storage buffer | pH: 7.00 Preservative: 0.025% Proclin 300 Constituents: 78% PBS, 1% BSA, 20% Glycerol (glycerin, glycerine) |
| Purity | Immunogen affinity purified |
| Clonality | Polyclonal |
| Isotype | IgG |

Applications

The Abpromise guarantee

Our **Abpromise guarantee** covers the use of ab97505 in the following tested applications.

The application notes include recommended starting dilutions; optimal dilutions/concentrations should be determined by the end user.

| Application | Abreviews | Notes |
|-------------|-----------|---|
| WB | ★★★★★ (1) | 1/500 - 1/10000. Predicted molecular weight: 158 kDa. |
| IHC-P | | 1/100 - 1/1000. |
| ICC/IF | | 1/100 - 1/1000. |

Target

Function

May play a role in RNA metabolism in both nuclei and mitochondria. In the nucleus binds to HNRPA1-associated poly(A) mRNAs and is part of nmRNP complexes at late stages of mRNA maturation which are possibly associated with nuclear mRNA export. May bind mature mRNA in the nucleus outer membrane. In mitochondria binds to poly(A) mRNA. Plays a role in translation or stability of mitochondrially encoded cytochrome c oxidase (COX) subunits. May be involved in transcription regulation. Cooperates with PPARGC1A to regulate certain mitochondrially encoded genes and gluconeogenic genes and may regulate docking of PPARGC1A to transcription factors. Seems to be involved in the transcription regulation of the multidrug-related genes MDR1 and MVP. Part of a nuclear factor that binds to the invMED1 element of MDR1 and MVP gene promoters. Binds single-stranded DNA.

Tissue specificity

Expressed ubiquitously. Expression is highest in heart, skeletal muscle, kidney and liver, intermediate in brain, non-mucosal colon, spleen and placenta, and lowest in small intestine, thymus, lung and peripheral blood leukocytes.

Involvement in disease

Leigh syndrome French-Canadian type

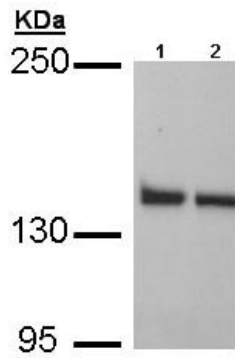
Sequence similarities

Contains 20 PPR (pentatricopeptide) repeats.

Cellular localization

Mitochondrion. Nucleus, nucleoplasm. Nucleus inner membrane. Nucleus outer membrane. Seems to be predominantly mitochondrial.

Images



Western blot - Anti-LRPPRC/GP130 antibody (ab97505)

All lanes : Anti-LRPPRC/GP130 antibody (ab97505) at 1/1000 dilution

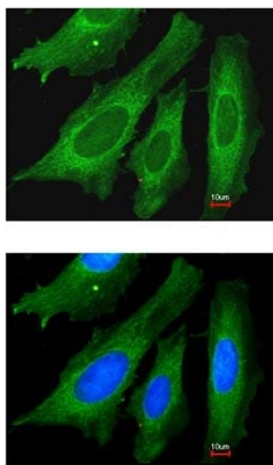
Lane 1 : H1299 whole cell lysate

Lane 2 : HeLa whole cell lysate

Lysates/proteins at 30 µg per lane.

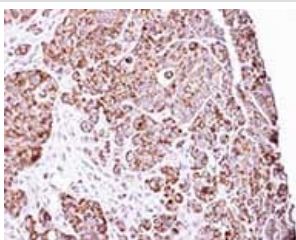
Predicted band size: 158 kDa

5% SDS-PAGE



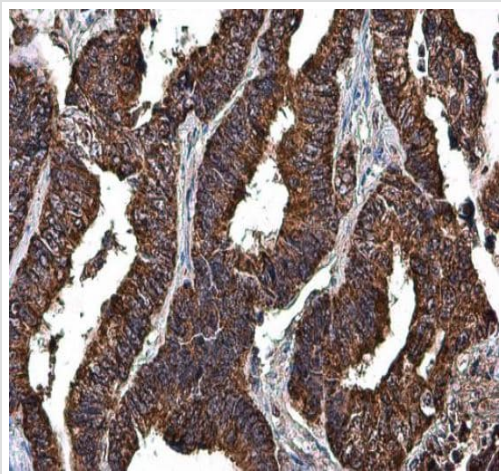
Immunocytochemistry/ Immunofluorescence - Anti-LRPPRC/GP130 antibody (ab97505)

Immunofluorescence analysis of paraformaldehyde-fixed HeLa using ab97505 at 1/200 dilution. Lower panel is also merged with DNA probe.



Immunohistochemistry (Formalin/PFA-fixed paraffin-embedded sections) - Anti-LRPPRC/GP130 antibody (ab97505)

Immunohistochemical analysis of paraffin-embedded SW480 Xenograft using ab97505 at 1/100 dilution.



Paraffin embedded human colon cancer tissue stained for LRP130 using ab97505 at 1/100 at dilution in immunohistochemical analysis.

Immunohistochemistry (Formalin/PFA-fixed paraffin-embedded sections) - Anti-LRPPRC/GP130 antibody (ab97505)

Please note: All products are "FOR RESEARCH USE ONLY. NOT FOR USE IN DIAGNOSTIC PROCEDURES"

Our Abpromise to you: Quality guaranteed and expert technical support

- Replacement or refund for products not performing as stated on the datasheet
- Valid for 12 months from date of delivery
- Response to your inquiry within 24 hours
- We provide support in Chinese, English, French, German, Japanese and Spanish
- Extensive multi-media technical resources to help you
- We investigate all quality concerns to ensure our products perform to the highest standards

If the product does not perform as described on this datasheet, we will offer a refund or replacement. For full details of the Abpromise, please visit <https://www.abcam.com/abpromise> or contact our technical team.

Terms and conditions

- Guarantee only valid for products bought direct from Abcam or one of our authorized distributors