

## Product datasheet

# Anti-LRRK2 (phospho T2483) antibody [MJF-R8 (21-2e)] ab156577

Recombinant RabMAb

[3 References](#) [2 Images](#)

### Overview

<b>Product name</b>	Anti-LRRK2 (phospho T2483) antibody [MJF-R8 (21-2e)]
<b>Description</b>	Rabbit monoclonal [MJF-R8 (21-2e)] to LRRK2 (phospho T2483)
<b>Host species</b>	Rabbit
<b>Tested applications</b>	<b>Suitable for:</b> WB
<b>Species reactivity</b>	<b>Reacts with:</b> Human
<b>Immunogen</b>	Synthetic peptide corresponding to Human LRRK2 (phospho T2483). Database link: <a href="#">Q5S007</a>
<b>Positive control</b>	HEK293 cells transiently transfected with wild-type or mutant LRRK2.
<b>General notes</b>	<p>This product is a recombinant monoclonal antibody, which offers several advantages including:</p> <ul style="list-style-type: none"> <li>- High batch-to-batch consistency and reproducibility</li> <li>- Improved sensitivity and specificity</li> <li>- Long-term security of supply</li> <li>- Animal-free production</li> </ul> <p>For more information <a href="#">see here</a>.</p> <p>Our RabMAb<sup>®</sup> technology is a patented hybridoma-based technology for making rabbit monoclonal antibodies. For details on our patents, please refer to <a href="#">RabMAb<sup>®</sup> patents</a>.</p> <p>This antibody was developed with support from The Michael J. Fox Foundation.</p>



### Properties

<b>Form</b>	Liquid
<b>Storage instructions</b>	Shipped at 4°C. Upon delivery aliquot and store at -20°C. Avoid freeze / thaw cycles.
<b>Storage buffer</b>	<p>pH: 7.2</p> <p>Preservative: 0.01% Sodium azide</p> <p>Constituents: 9% PBS, 40% Glycerol (glycerin, glycerine), 0.05% BSA, 50% Tissue culture</p>

	supernatant
<b>Purity</b>	Tissue culture supernatant
<b>Clonality</b>	Monoclonal
<b>Clone number</b>	MJF-R8 (21-2e)
<b>Isotype</b>	IgG

## Applications

**The Abpromise guarantee** Our **Abpromise guarantee** covers the use of ab156577 in the following tested applications. The application notes include recommended starting dilutions; optimal dilutions/concentrations should be determined by the end user.

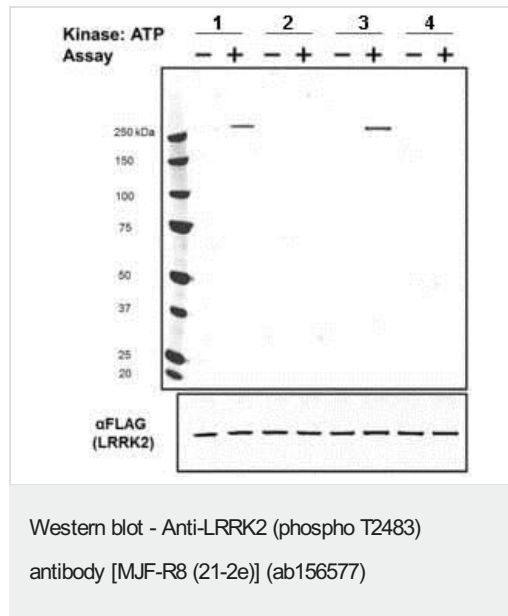
Application	Abreviews	Notes
<b>WB</b>		1/1000 - 1/5000. Predicted molecular weight: 286 kDa.

## Target

<b>Function</b>	Positively regulates autophagy through a calcium-dependent activation of the CaMKK/AMPK signaling pathway. The process involves activation of nicotinic acid adenine dinucleotide phosphate (NAADP) receptors, increase in lysosomal pH, and calcium release from lysosomes. Together with RAB29, plays a role in the retrograde trafficking pathway for recycling proteins, such as mannose 6 phosphate receptor (M6PR), between lysosomes and the Golgi apparatus in a retromer-dependent manner. Regulates neuronal process morphology in the intact central nervous system (CNS). Plays a role in synaptic vesicle trafficking. Phosphorylates PRDX3. Has GTPase activity. May play a role in the phosphorylation of proteins central to Parkinson disease.
<b>Tissue specificity</b>	Expressed in the brain. Expressed in pyramidal neurons in all cortical laminae of the visual cortex, in neurons of the substantia nigra pars compacta and caudate putamen (at protein level). Expressed throughout the adult brain, but at a lower level than in heart and liver. Also expressed in placenta, lung, skeletal muscle, kidney and pancreas. In the brain, expressed in the cerebellum, cerebral cortex, medulla, spinal cord occipital pole, frontal lobe, temporal lobe and putamen. Expression is particularly high in brain dopaminoceptive areas.
<b>Involvement in disease</b>	Parkinson disease 8
<b>Sequence similarities</b>	Belongs to the protein kinase superfamily. TKL Ser/Thr protein kinase family. Contains 12 LRR (leucine-rich) repeats. Contains 1 protein kinase domain. Contains 1 Roc domain. Contains 7 WD repeats.
<b>Domain</b>	The seven-bladed WD repeat region is critical for synaptic vesicle trafficking and mediates interaction with multiple vesicle-associated presynaptic proteins. The Roc domain mediates homodimerization and regulates kinase activity.
<b>Post-translational modifications</b>	Autophosphorylated.
<b>Cellular localization</b>	Membrane. Cytoplasm. Perikaryon. Mitochondrion. Golgi apparatus. Cell projection, axon. Cell projection, dendrite. Endoplasmic reticulum. Cytoplasmic vesicle, secretory vesicle, synaptic vesicle membrane. Endosome. Lysosome. Mitochondrion outer membrane. Mitochondrion inner membrane. Mitochondrion matrix. Predominantly associated with intracytoplasmic vesicular and

membranous structures (By similarity). Localized in the cytoplasm and associated with cellular membrane structures. Predominantly associated with the mitochondrial outer membrane of the mitochondria. Colocalized with RAB29 along tubular structures emerging from Golgi apparatus. Localizes in intracytoplasmic punctate structures of neuronal perikarya and dendritic and axonal processes.

## Images



**All lanes :** Anti-LRRK2 (phospho T2483) antibody [MJF-R8 (21-2e)] (ab156577) at 1/1000 dilution

**Lane 1 :** HEK293 cells transiently transfected with wild type LRRK2

**Lane 2 :** HEK293 cells transiently transfected with T2483

**Lane 3 :** HEK293 cells transiently transfected with G2019S

**Lane 4 :** HEK293 cells transiently transfected with Kinase dead

Lysates/proteins at 10 µg per lane.

### Secondary

**All lanes :** HRP labelled goat anti-rabbit at 1/2000 dilution

**Predicted band size:** 286 kDa

LRRK2 protein was immunoprecipitated and subjected to an in vitro kinase assay in the presence (+) or absence (-) of ATP.

Why choose a recombinant antibody?

**Research with confidence**  
Consistent and reproducible results

**Long-term and scalable supply**  
Recombinant technology

**Success from the first experiment**  
Confirmed specificity

**Ethical standards compliant**  
Animal-free production

Anti-LRRK2 (phospho T2483) antibody [MJF-R8 (21-2e)] (ab156577)

**Please note:** All products are "FOR RESEARCH USE ONLY. NOT FOR USE IN DIAGNOSTIC PROCEDURES"

### **Our Abpromise to you: Quality guaranteed and expert technical support**

---

- Replacement or refund for products not performing as stated on the datasheet
- Valid for 12 months from date of delivery
- Response to your inquiry within 24 hours
  
- We provide support in Chinese, English, French, German, Japanese and Spanish
- Extensive multi-media technical resources to help you
- We investigate all quality concerns to ensure our products perform to the highest standards

If the product does not perform as described on this datasheet, we will offer a refund or replacement. For full details of the Abpromise, please visit <https://www.abcam.com/abpromise> or contact our technical team.

### **Terms and conditions**

---

- Guarantee only valid for products bought direct from Abcam or one of our authorized distributors