

Product datasheet

Anti-LSECtin antibody [EPR13724] ab181196

Recombinant RabMAb

[1 Abreviews](#) [2 References](#) [5 Images](#)

Overview

Product name	Anti-LSECtin antibody [EPR13724]
Description	Rabbit monoclonal [EPR13724] to LSECtin
Host species	Rabbit
Tested applications	Suitable for: WB, IHC-P Unsuitable for: Flow Cyt
Species reactivity	Reacts with: Mouse, Human
Immunogen	Recombinant fragment. This information is proprietary to Abcam and/or its suppliers.
Positive control	WB: Human fetal liver lysate and mouse liver lysates. IHC-P: Human lymph node lysate and tissue, Human liver tissue.
General notes	<p>This product is a recombinant monoclonal antibody, which offers several advantages including:</p> <ul style="list-style-type: none"> - High batch-to-batch consistency and reproducibility - Improved sensitivity and specificity - Long-term security of supply - Animal-free production <p>For more information see here.</p> <p>Our RabMAb[®] technology is a patented hybridoma-based technology for making rabbit monoclonal antibodies. For details on our patents, please refer to RabMAb[®] patents.</p>

Properties

Form	Liquid
Storage instructions	Shipped at 4°C. Store at +4°C short term (1-2 weeks). Upon delivery aliquot. Store at -20°C long term. Avoid freeze / thaw cycle.
Storage buffer	Preservative: 0.01% Sodium azide Constituents: 59% PBS, 40% Glycerol (glycerin, glycerine), 0.05% BSA
Purity	Protein A purified
Clonality	Monoclonal
Clone number	EPR13724
Isotype	IgG

Applications

The Abpromise guarantee

Our **Abpromise guarantee** covers the use of ab181196 in the following tested applications.

The application notes include recommended starting dilutions; optimal dilutions/concentrations should be determined by the end user.

Application	Abreviews	Notes
WB		1/1000. Detects a band of approximately 40 kDa (predicted molecular weight: 33 kDa).
IHC-P		1/100 - 1/250. Perform heat mediated antigen retrieval with Tris/EDTA buffer pH 9.0 before commencing with IHC staining protocol.

Application notes

Is unsuitable for Flow Cyt.

Target

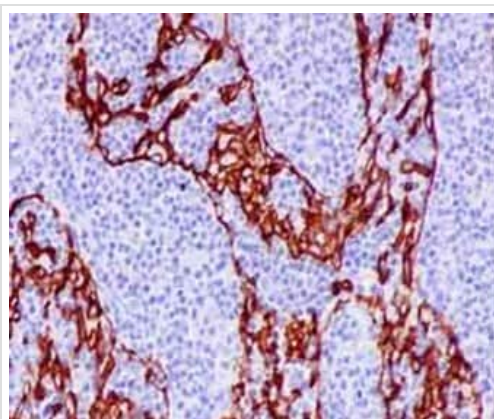
Sequence similarities

Contains 1 C-type lectin domain.

Cellular localization

Membrane.

Images

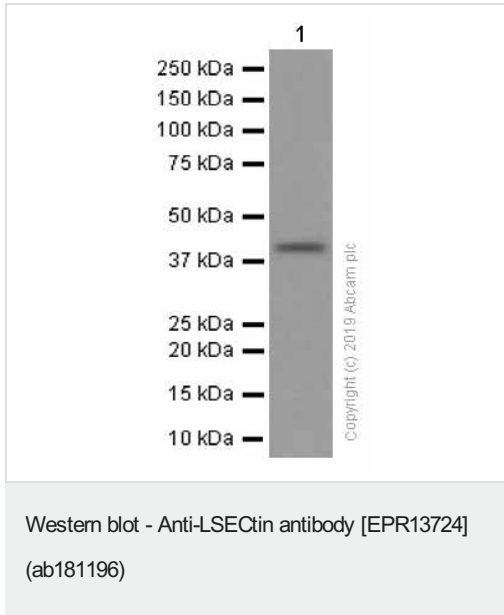


Immunohistochemical analysis of paraffin-embedded Human lymph node tissue labeling LSECtin with ab181196 at 1/250 dilution.

Secondary antibody: anti rabbit IgG (HRP) prediluted. Counter stained with Hematoxylin.

Perform heat mediated antigen retrieval with EDTA buffer pH 9 before commencing with IHC staining protocol.

Immunohistochemistry (Formalin/PFA-fixed paraffin-embedded sections) - Anti-LSECtin antibody [EPR13724] (ab181196)



Anti-LSECtin antibody [EPR13724] (ab181196) at 1/1000 dilution +
Mouse liver tissue lysate at 15 µg

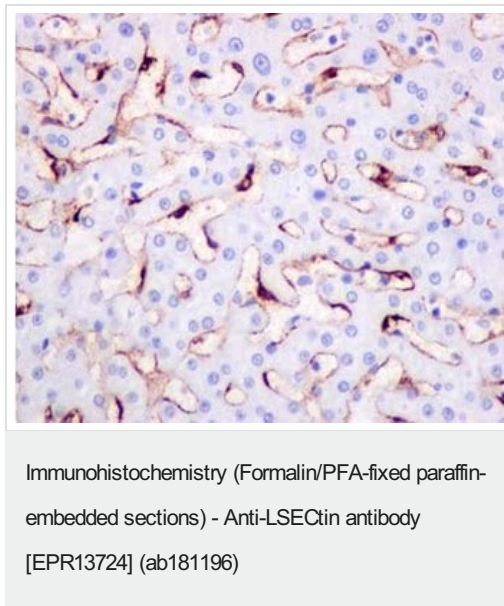
Secondary

Goat Anti-Rabbit IgG H&L (HRP) ([ab97051](#)) at 1/20000 dilution

Predicted band size: 33 kDa

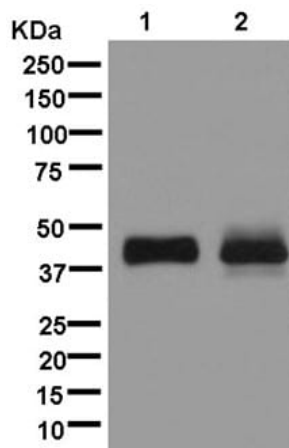
Observed band size: 40 kDa

Exposure time: 180 seconds



Immunohistochemical analysis of paraffin-embedded Human liver tissue labeling LSECtin with ab181196 at 1/250 dilution. Secondary antibody: anti rabbit IgG (HRP) prediluted. Counter stained with Hematoxylin.

Perform heat mediated antigen retrieval with EDTA buffer pH 9 before commencing with IHC staining protocol.



Western blot - Anti-LSECtin antibody [EPR13724] (ab181196)

All lanes : Anti-LSECtin antibody [EPR13724] (ab181196) at 1/1000 dilution

Lane 1 : Human fetal liver lysate

Lane 2 : Human lymph node lysate

Lysates/proteins at 20 µg per lane.

Secondary

All lanes : Goat Anti-Rabbit IgG H&L (HRP) ([ab136636](#)) at 1/500 dilution

Predicted band size: 33 kDa

Why choose a recombinant antibody?



Research with confidence
Consistent and reproducible results



Long-term and scalable supply
Recombinant technology



Success from the first experiment
Confirmed specificity



Ethical standards compliant
Animal-free production

Anti-LSECtin antibody [EPR13724] (ab181196)

Please note: All products are "FOR RESEARCH USE ONLY. NOT FOR USE IN DIAGNOSTIC PROCEDURES"

Our Abpromise to you: Quality guaranteed and expert technical support

- Replacement or refund for products not performing as stated on the datasheet
- Valid for 12 months from date of delivery
- Response to your inquiry within 24 hours
- We provide support in Chinese, English, French, German, Japanese and Spanish

- Extensive multi-media technical resources to help you
- We investigate all quality concerns to ensure our products perform to the highest standards

If the product does not perform as described on this datasheet, we will offer a refund or replacement. For full details of the Abpromise, please visit <https://www.abcam.com/abpromise> or contact our technical team.

Terms and conditions

- Guarantee only valid for products bought direct from Abcam or one of our authorized distributors