




## Product datasheet

### Anti-LSR antibody ab191180

[1 References](#) [2 Images](#)

#### Overview

<b>Product name</b>	Anti-LSR antibody
<b>Description</b>	Rabbit polyclonal to LSR
<b>Host species</b>	Rabbit
<b>Specificity</b>	ab191180 was affinity purified using an epitope specific to LSR immobilized on a solid support.
<b>Tested applications</b>	<b>Suitable for:</b> IP, WB
<b>Species reactivity</b>	<b>Reacts with:</b> Human <b>Predicted to work with:</b> Chimpanzee, Gorilla 
<b>Immunogen</b>	Synthetic peptide within Human LSR aa 450-550. The exact immunogen sequence used to generate this antibody is proprietary information. If additional detail on the immunogen is needed to determine the suitability of the antibody for your needs, please <b><a href="#">contact</a></b> our Scientific Support team to discuss your requirements. Database link: <a href="#">Q86X29</a> <div>  <a href="#">Run BLAST with</a>  <a href="#">Run BLAST with</a> </div>
<b>Positive control</b>	WB: HeLa, 293T and Jurkat whole cell lysates.
<b>General notes</b>	<p>The Life Science industry has been in the grips of a reproducibility crisis for a number of years. Abcam is leading the way in addressing this with our range of recombinant monoclonal antibodies and knockout edited cell lines for gold-standard validation. Please check that this product meets your needs before purchasing.</p> <p>If you have any questions, special requirements or concerns, please send us an inquiry and/or contact our Support team ahead of purchase. Recommended alternatives for this product can be found below, along with publications, customer reviews and Q&amp;As</p>

#### Properties

<b>Form</b>	Liquid
<b>Storage instructions</b>	Shipped at 4°C. Store at +4°C short term (1-2 weeks). Upon delivery aliquot. Store at -20°C long term. Avoid freeze / thaw cycle.
<b>Storage buffer</b>	pH: 7 Preservative: 0.09% Sodium azide Constituent: 99% Tris citrate/phosphate

	pH 7 to 8
<b>Purity</b>	Immunogen affinity purified
<b>Clonality</b>	Polyclonal
<b>Isotype</b>	IgG

## Applications

**The Abpromise guarantee** Our **Abpromise guarantee** covers the use of ab191180 in the following tested applications.

The application notes include recommended starting dilutions; optimal dilutions/concentrations should be determined by the end user.

Application	Abreviews	Notes
<b>IP</b>		Use at 2-10 µg/mg of lysate.
<b>WB</b>		1/2000 - 1/10000. Predicted molecular weight: 71 kDa.

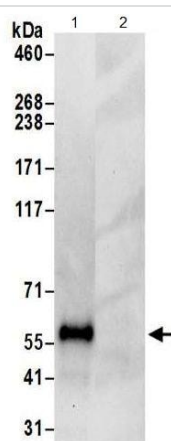
## Target

**Function** Probable role in the clearance of triglyceride-rich lipoprotein from blood. Binds chylomicrons, LDL and VLDL in presence of free fatty acids and allows their subsequent uptake in the cells.

**Sequence similarities** Belongs to the immunoglobulin superfamily. LISCH7 family.  
Contains 1 Ig-like V-type (immunoglobulin-like) domain.

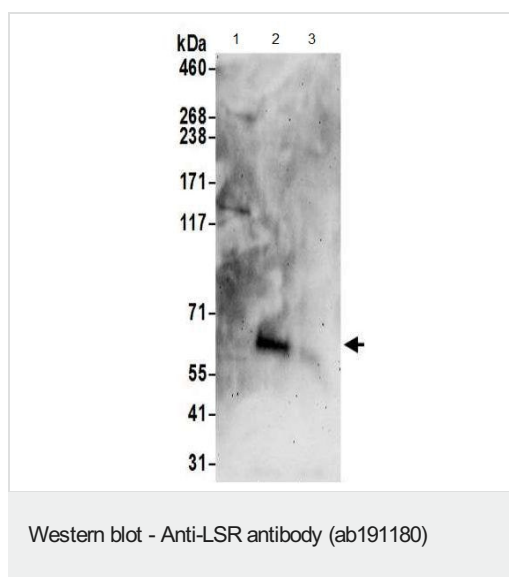
**Cellular localization** Cell membrane.

## Images



Immunoprecipitation of 293T whole cell lysate using ab191180 (lane 1) at 6µg per reaction (0.5 or 1 mg/IP; 20% of IP loaded/lane). Immunoblot analysis of LSR utilised ab191180 at 0.4 µg/ml. The lysate in lane 2 is precipitated with an IgG control antibody. Detection utilised chemiluminescence with an exposure time of 30seconds.

Immunoprecipitation - Anti-LSR antibody (ab191180)



**All lanes :** Anti-LSR antibody (ab191180) at 0.1 µg/ml

**Lane 1 :** HeLa whole cell lysate prepared using RIPA lysis buffer.

**Lane 2 :** 293T whole cell lysate prepared using RIPA lysis buffer.

**Lane 3 :** Jurkat whole cell lysate prepared using RIPA lysis buffer.

Lysates/proteins at 50 µg per lane.

Developed using the ECL technique.

**Predicted band size:** 71 kDa

**Exposure time:** 3 minutes

**Please note:** All products are "FOR RESEARCH USE ONLY. NOT FOR USE IN DIAGNOSTIC PROCEDURES"

### Our Abpromise to you: Quality guaranteed and expert technical support

---

- Replacement or refund for products not performing as stated on the datasheet
- Valid for 12 months from date of delivery
- Response to your inquiry within 24 hours
- We provide support in Chinese, English, French, German, Japanese and Spanish
- Extensive multi-media technical resources to help you
- We investigate all quality concerns to ensure our products perform to the highest standards

If the product does not perform as described on this datasheet, we will offer a refund or replacement. For full details of the Abpromise, please visit <https://www.abcam.com/abpromise> or contact our technical team.

### Terms and conditions

---

- Guarantee only valid for products bought direct from Abcam or one of our authorized distributors