

## Product datasheet

# Anti-LTBR antibody [3C8] - Low endotoxin, Azide free ab171241

[1 Image](#)

### Overview

<b>Product name</b>	Anti-LTBR antibody [3C8] - Low endotoxin, Azide free
<b>Description</b>	Rat monoclonal [3C8] to LTBR - Low endotoxin, Azide free
<b>Host species</b>	Rat
<b>Tested applications</b>	<b>Suitable for:</b> Flow Cyt
<b>Species reactivity</b>	<b>Reacts with:</b> Mouse
<b>Immunogen</b>	The details of the immunogen for this antibody are not available.
<b>Positive control</b>	NIH/3T3 cells.
<b>General notes</b>	<p>Endotoxin Level: Less than 0.001 ng/μg antibody, as determined by the LAL assay.</p> <p>The Life Science industry has been in the grips of a reproducibility crisis for a number of years. Abcam is leading the way in addressing this with our range of recombinant monoclonal antibodies and knockout edited cell lines for gold-standard validation. Please check that this product meets your needs before purchasing.</p> <p>If you have any questions, special requirements or concerns, please send us an inquiry and/or contact our Support team ahead of purchase. Recommended alternatives for this product can be found below, along with publications, customer reviews and Q&amp;As</p>

### Properties

<b>Form</b>	Liquid
<b>Storage instructions</b>	Shipped at 4°C. Store at +4°C short term (1-2 weeks). Upon delivery aliquot. Store at -20°C long term. Avoid freeze / thaw cycle.
<b>Storage buffer</b>	pH: 7.20 Constituent: 100% PBS
<b>Carrier free</b>	Yes
<b>Purity</b>	Protein G purified
<b>Clonality</b>	Monoclonal
<b>Clone number</b>	3C8
<b>Isotype</b>	IgG1

Light chain type

kappa

## Applications

### The Abpromise guarantee

Our **Abpromise guarantee** covers the use of ab171241 in the following tested applications.

The application notes include recommended starting dilutions; optimal dilutions/concentrations should be determined by the end user.

Application	Abreviews	Notes
Flow Cyt		Use at an assay dependent concentration. ab171241 can be used at less than or equal to 0.5µg per test. A test is defined as the amount (µg) of antibody that will stain a cell sample in a final volume of 100 µL. Cell number should be determined empirically but can range from 10e5 to 10e8 cells/test. It is recommended that the antibody be carefully titrated for optimal performance in the assay of interest.

## Target

### Function

Receptor for the heterotrimeric lymphotoxin containing LTA and LTB, and for TNFS14/LIGHT. Promotes apoptosis via TRAF3 and TRAF5. May play a role in the development of lymphoid organs.

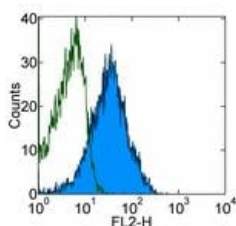
### Sequence similarities

Contains 4 TNFR-Cys repeats.

### Cellular localization

Membrane.

## Images



Flow Cytometry - Anti-LTBR antibody [3C8] - Low endotoxin, Azide free (ab171241)

Flow cytometry analysis of total viable NIH/3T3 cells (10e5 to 10e8) labeling LTBR with ab171241 (filled histogram) at 0.25µg or Rat IgG1 control (open histogram). Followed by anti-Rat IgG Biotin and Streptavidin PE.

**Please note:** All products are "FOR RESEARCH USE ONLY. NOT FOR USE IN DIAGNOSTIC PROCEDURES"

## Our Abpromise to you: Quality guaranteed and expert technical support

- Replacement or refund for products not performing as stated on the datasheet
- Valid for 12 months from date of delivery

- Response to your inquiry within 24 hours
- We provide support in Chinese, English, French, German, Japanese and Spanish
- Extensive multi-media technical resources to help you
- We investigate all quality concerns to ensure our products perform to the highest standards

If the product does not perform as described on this datasheet, we will offer a refund or replacement. For full details of the Abpromise, please visit <https://www.abcam.com/abpromise> or contact our technical team.

#### **Terms and conditions**

---

- Guarantee only valid for products bought direct from Abcam or one of our authorized distributors