

Product datasheet

Anti-LTK antibody [EPR5175(2)] ab129155

Recombinant RabMAb

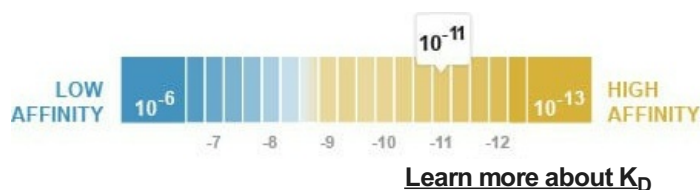
[1 References](#) [4 Images](#)

Overview

Product name	Anti-LTK antibody [EPR5175(2)]
Description	Rabbit monoclonal [EPR5175(2)] to LTK
Host species	Rabbit
Tested applications	Suitable for: WB, IHC-P Unsuitable for: Flow Cyt, ICC/IF or IP
Species reactivity	Reacts with: Human
Immunogen	Synthetic peptide within Human LTK aa 800-900 (C terminal). The exact sequence is proprietary.
Positive control	Raji, Human tonsil and Human spleen lysates; Human colon tissue
General notes	<p>This product is a recombinant monoclonal antibody, which offers several advantages including:</p> <ul style="list-style-type: none"> - High batch-to-batch consistency and reproducibility - Improved sensitivity and specificity - Long-term security of supply - Animal-free production <p>For more information see here.</p> <p>Our RabMAb[®] technology is a patented hybridoma-based technology for making rabbit monoclonal antibodies. For details on our patents, please refer to RabMAb[®] patents.</p> <p>Mouse, Rat: We have preliminary internal testing data to indicate this antibody may not react with these species. Please contact us for more information.</p>

Properties

Form	Liquid
Storage instructions	Shipped at 4°C. Store at -20°C. Stable for 12 months at -20°C.
Dissociation constant (K _D)	K _D = 7.60 x 10 ⁻¹¹ M



Storage buffer	pH: 7.20 Preservative: 0.01% Sodium azide Constituents: 9% PBS, 40% Glycerol (glycerin, glycerine), 0.05% BSA, 50% Tissue culture supernatant
Purity	Protein A purified
Clonality	Monoclonal
Clone number	EPR5175(2)
Isotype	IgG

Applications

The Abpromise guarantee Our **Abpromise guarantee** covers the use of ab129155 in the following tested applications. The application notes include recommended starting dilutions; optimal dilutions/concentrations should be determined by the end user.

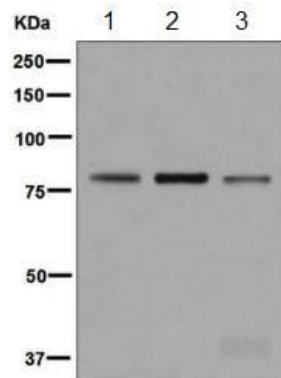
Application	Abreviews	Notes
WB		1/1000 - 1/10000. Predicted molecular weight: 92 kDa.
IHC-P		1/250 - 1/500. Perform heat mediated antigen retrieval before commencing with IHC staining protocol.

Application notes Is unsuitable for Flow Cyt, ICC/IF or IP.

Target

Function	Orphan receptor with a tyrosine-protein kinase activity. The exact function of this protein is not known. Studies with chimeric proteins (replacing its extracellular region with that of several known growth factor receptors, such as EGFR and CSFIR) demonstrate its ability to promote growth and specifically neurite outgrowth, and cell survival. Signaling appears to involve the PI3 kinase pathway. Involved in regulation of the secretory pathway involving endoplasmic reticulum (ER) export sites (ERESs) and ER to Golgi transport.
Tissue specificity	Expressed in non-hematopoietic cell lines and T- and B-cell lines.
Involvement in disease	Note=Genetic variations in LTK that cause up-regulation of the PI3K pathway may possibly contribute to susceptibility to abnormal proliferation of self-reactive B cells and, therefore, to systemic lupus erythematosus (SLE). SLE is a chronic, inflammatory and often febrile multisystemic disorder of connective tissue, thought to represent a failure of the regulatory mechanisms of the autoimmune system.
Sequence similarities	Belongs to the protein kinase superfamily. Tyr protein kinase family. Insulin receptor subfamily. Contains 1 protein kinase domain.
Cellular localization	Membrane.

Images



Western blot - Anti-LTK antibody [EPR5175(2)]
(ab129155)

All lanes : Anti-LTK antibody [EPR5175(2)] (ab129155) at 1/1000 dilution

Lane 1 : Raji cell lysate

Lane 2 : Human tonsil lysate

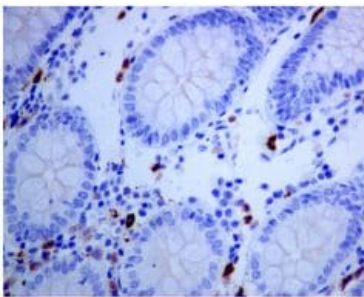
Lane 3 : Human spleen lysate

Lysates/proteins at 10 µg per lane.

Secondary

All lanes : HRP labelled goat anti-rabbit at 1/2000 dilution

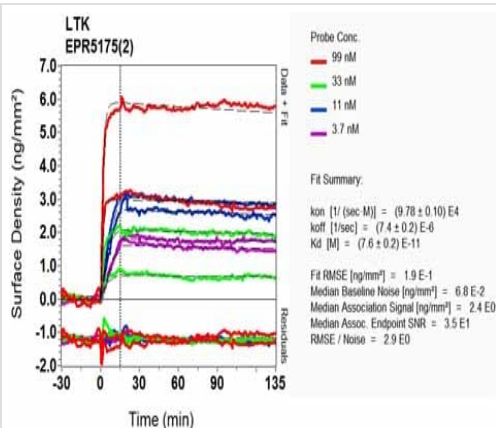
Predicted band size: 92 kDa



Immunohistochemistry (Formalin/PFA-fixed paraffin-embedded sections) - Anti-LTK antibody
[EPR5175(2)] (ab129155)

ab129155, at a 1/250 dilution, staining LTK in paraffin embedded Human colon tissue by Immunohistochemistry.

Perform heat mediated antigen retrieval before commencing with IHC staining protocol.



OR-D Scanning - Anti-LTK antibody [EPR5175(2)]
(ab129155)

Equilibrium disassociation constant (K_D)

Learn more about K_D

[Click here to learn more about \$K_D\$](#)

Why choose a recombinant antibody?



Research with confidence
Consistent and reproducible results



Long-term and scalable supply
Recombinant technology



Success from the first experiment
Confirmed specificity



Ethical standards compliant
Animal-free production

Anti-LTK antibody [EPR5175(2)] (ab129155)

Please note: All products are "FOR RESEARCH USE ONLY. NOT FOR USE IN DIAGNOSTIC PROCEDURES"

Our Abpromise to you: Quality guaranteed and expert technical support

- Replacement or refund for products not performing as stated on the datasheet
- Valid for 12 months from date of delivery
- Response to your inquiry within 24 hours
- We provide support in Chinese, English, French, German, Japanese and Spanish
- Extensive multi-media technical resources to help you
- We investigate all quality concerns to ensure our products perform to the highest standards

If the product does not perform as described on this datasheet, we will offer a refund or replacement. For full details of the Abpromise, please visit <https://www.abcam.com/abpromise> or contact our technical team.

Terms and conditions

- Guarantee only valid for products bought direct from Abcam or one of our authorized distributors