

Product datasheet

Anti-Luteinizing Hormone antibody ab76902

[2 References](#) [1 Image](#)

Overview

Product name	Anti-Luteinizing Hormone antibody
Description	Rabbit polyclonal to Luteinizing Hormone
Host species	Rabbit
Tested applications	Suitable for: IHC-P
Species reactivity	Reacts with: Human
Immunogen	Full length protein, human Luteinizing Hormone, beta chain.
Positive control	Human anterior pituitary tissue.
General notes	<p>The Life Science industry has been in the grips of a reproducibility crisis for a number of years. Abcam is leading the way in addressing this with our range of recombinant monoclonal antibodies and knockout edited cell lines for gold-standard validation. Please check that this product meets your needs before purchasing.</p> <p>If you have any questions, special requirements or concerns, please send us an inquiry and/or contact our Support team ahead of purchase. Recommended alternatives for this product can be found below, along with publications, customer reviews and Q&As</p>

Properties

Form	Liquid
Storage instructions	Shipped at 4°C. Store at +4°C short term (1-2 weeks). Store at -20°C or -80°C. Avoid freeze / thaw cycle.
Storage buffer	pH: 7.40 Preservative: 0.05% Sodium azide Constituents: 1% BSA, 0.87% Sodium chloride, 0.0268% PBS
Purity	Protein A purified
Clonality	Polyclonal
Isotype	IgG

Applications

The Abpromise guarantee Our **Abpromise guarantee** covers the use of ab76902 in the following tested applications.

The application notes include recommended starting dilutions; optimal dilutions/concentrations should be determined by the end user.

Application	Abreviews	Notes
IHC-P		

Application notes

ICC: 1/50 - 1/200. Use streptavidin-biotin system or polymer system.
IHC-P: 1/50 - 1/200.

Not yet tested in other applications.

Optimal dilutions/concentrations should be determined by the end user.

Target

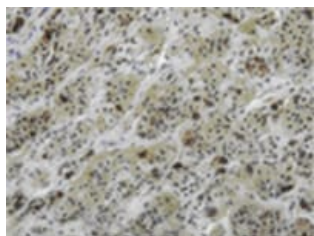
Relevance

Luteinizing Hormone is a member of the glycoprotein hormone family. Glycoprotein hormones are heterodimers consisting of a common alpha subunit and an unique beta subunit which confers biological specificity. LH is expressed in the pituitary gland and promotes spermatogenesis and ovulation by stimulating the testes and ovaries to synthesize steroids. Mutations in the Luteinizing Hormone (LHB) gene are associated with hypogonadism which is characterized by infertility and pseudohermaphroditism.

Cellular localization

Secreted

Images



ab76902 at 1/50 dilution staining Luteinizing Hormone in Human Anterior Pituitary by Immunohistochemistry, Formalin-Fixed, Paraffin-embedded tissue; DAB counterstain Hematoxylin.

Immunohistochemistry (Formalin/PFA-fixed paraffin-embedded sections) - Anti-Luteinizing Hormone antibody (ab76902)

Please note: All products are "FOR RESEARCH USE ONLY. NOT FOR USE IN DIAGNOSTIC PROCEDURES"

Our Abpromise to you: Quality guaranteed and expert technical support

- Replacement or refund for products not performing as stated on the datasheet
- Valid for 12 months from date of delivery
- Response to your inquiry within 24 hours
- We provide support in Chinese, English, French, German, Japanese and Spanish
- Extensive multi-media technical resources to help you

- We investigate all quality concerns to ensure our products perform to the highest standards

If the product does not perform as described on this datasheet, we will offer a refund or replacement. For full details of the Abpromise, please visit <https://www.abcam.com/abpromise> or contact our technical team.

Terms and conditions

- Guarantee only valid for products bought direct from Abcam or one of our authorized distributors