



Product datasheet

Anti-Luteinizing Hormone beta antibody ab189339

1 Image

Overview

Product name	Anti-Luteinizing Hormone beta antibody
Description	Sheep polyclonal to Luteinizing Hormone beta
Host species	Sheep
Specificity	TSH 20%; hCG6%; FSH6%; Prolactin hPL.
Tested applications	Suitable for: IHC-P
Species reactivity	Reacts with: Human
Immunogen	Full length native protein (purified) corresponding to Human Luteinizing Hormone beta. Highly purified human pituitary luteinizing hormone. Database link: P01229
	<div>  Run BLAST with </div> <div>  Run BLAST with </div>
Positive control	Human placenta tissue.
General notes	<p>The Life Science industry has been in the grips of a reproducibility crisis for a number of years. Abcam is leading the way in addressing this with our range of recombinant monoclonal antibodies and knockout edited cell lines for gold-standard validation. Please check that this product meets your needs before purchasing.</p> <p>If you have any questions, special requirements or concerns, please send us an inquiry and/or contact our Support team ahead of purchase. Recommended alternatives for this product can be found below, along with publications, customer reviews and Q&As</p>

Properties

Form	Liquid
Storage instructions	Shipped at 4°C. Store at +4°C short term (1-2 weeks). Upon delivery aliquot. Store at -20°C long term. Avoid freeze / thaw cycle.
Storage buffer	Preservative: 0.09% Sodium azide Constituent: 99% PBS
Purity	Protein G purified
Clonality	Polyclonal
Isotype	IgG

Applications

The Abpromise guarantee

Our **Abpromise guarantee** covers the use of ab189339 in the following tested applications.

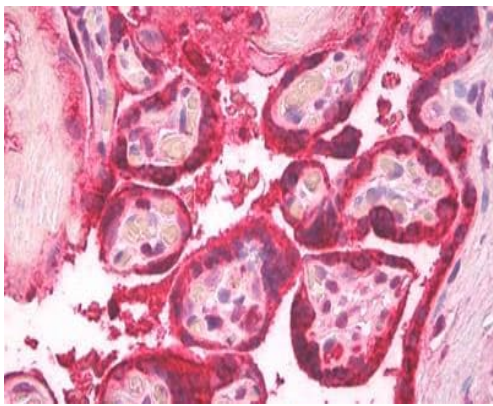
The application notes include recommended starting dilutions; optimal dilutions/concentrations should be determined by the end user.

Application	Abreviews	Notes
IHC-P		Use a concentration of 2.5 µg/ml. Perform heat mediated antigen retrieval before commencing with IHC staining protocol.

Target

Function	Promotes spermatogenesis and ovulation by stimulating the testes and ovaries to synthesize steroids.
Tissue specificity	Pituitary gland.
Involvement in disease	Defects in LHB are a cause of hypogonadism LHB-related (HGON-LHB) [MIM:152780]. Hypogonadism is characterized by infertility and pseudohermaphroditism.
Sequence similarities	Belongs to the glycoprotein hormones subunit beta family.
Cellular localization	Secreted.

Images



Immunohistochemical analysis of formalin fixed paraffin embedded human placenta labeling Luteinizing Hormone beta with ab189339 at 2.5 µg/ml

Immunohistochemistry (Formalin/PFA-fixed paraffin-embedded sections) - Anti-Luteinizing Hormone beta antibody (ab189339)

Please note: All products are "FOR RESEARCH USE ONLY. NOT FOR USE IN DIAGNOSTIC PROCEDURES"

Our Abpromise to you: Quality guaranteed and expert technical support

- Replacement or refund for products not performing as stated on the datasheet
- Valid for 12 months from date of delivery
- Response to your inquiry within 24 hours

- We provide support in Chinese, English, French, German, Japanese and Spanish
- Extensive multi-media technical resources to help you
- We investigate all quality concerns to ensure our products perform to the highest standards

If the product does not perform as described on this datasheet, we will offer a refund or replacement. For full details of the Abpromise, please visit <https://www.abcam.com/abpromise> or contact our technical team.

Terms and conditions

- Guarantee only valid for products bought direct from Abcam or one of our authorized distributors