

## Product datasheet

# Anti-Luteinizing Hormone beta antibody [EPR8195] ab174265

Recombinant RabMAb

★★★★☆ [1 Abreviews](#) [3 Images](#)

### Overview

---

<b>Product name</b>	Anti-Luteinizing Hormone beta antibody [EPR8195]
<b>Description</b>	Rabbit monoclonal [EPR8195] to Luteinizing Hormone beta
<b>Host species</b>	Rabbit
<b>Tested applications</b>	<b>Suitable for:</b> mIHC, IHC-P <b>Unsuitable for:</b> Flow Cyt, ICC/IF, IP or WB
<b>Species reactivity</b>	<b>Reacts with:</b> Human
<b>Immunogen</b>	Synthetic peptide. This information is proprietary to Abcam and/or its suppliers.
<b>Positive control</b>	Human pancreas tissue. mIHC: Human pituitary gland.
<b>General notes</b>	This product is a recombinant monoclonal antibody, which offers several advantages including: <ul style="list-style-type: none"><li>- High batch-to-batch consistency and reproducibility</li><li>- Improved sensitivity and specificity</li><li>- Long-term security of supply</li><li>- Animal-free production</li></ul> For more information <a href="#">see here</a> . Our RabMAb <sup>®</sup> technology is a patented hybridoma-based technology for making rabbit monoclonal antibodies. For details on our patents, please refer to <a href="#">RabMAb<sup>®</sup> patents</a> .

### Properties

---

<b>Form</b>	Liquid
<b>Storage instructions</b>	Shipped at 4°C. Store at +4°C short term (1-2 weeks). Upon delivery aliquot. Store at -20°C long term. Avoid freeze / thaw cycle.
<b>Storage buffer</b>	pH: 7.20 Preservative: 0.01% Sodium azide Constituents: 9% PBS, 40% Glycerol (glycerin, glycerine), 0.05% BSA, 50% Tissue culture supernatant
<b>Purity</b>	Protein A purified
<b>Clonality</b>	Monoclonal

Clone number                   EPR8195  
 Isotype                            IgG

## Applications

**The Abpromise guarantee**           Our **Abpromise guarantee** covers the use of ab174265 in the following tested applications.

The application notes include recommended starting dilutions; optimal dilutions/concentrations should be determined by the end user.

Application	Abreviews	Notes
mIHC		Use at an assay dependent concentration.
IHC-P	★★★★★ (1)	1/250 - 1/500. Perform heat mediated antigen retrieval with citrate buffer pH 6 before commencing with IHC staining protocol.

**Application notes**                    Is unsuitable for Flow Cyt, ICC/IF, IP or WB.

## Target

**Function**                               Promotes spermatogenesis and ovulation by stimulating the testes and ovaries to synthesize steroids.

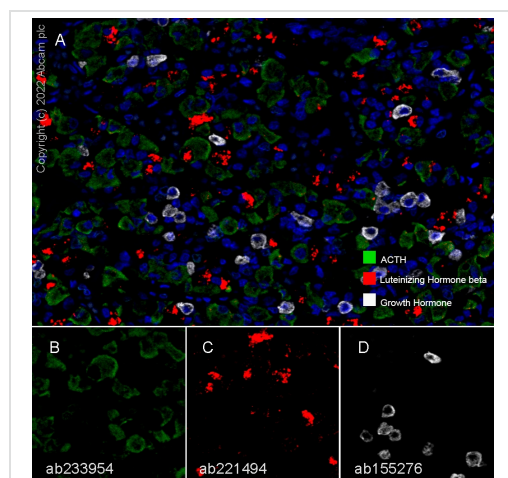
**Tissue specificity**                    Pituitary gland.

**Involvement in disease**            Defects in LHB are a cause of hypogonadism LHB-related (HGON-LHB) [MIM:152780]. Hypogonadism is characterized by infertility and pseudohermaphroditism.

**Sequence similarities**                Belongs to the glycoprotein hormones subunit beta family.

**Cellular localization**                Secreted.

## Images



Multiplex immunohistochemistry - Anti-Luteinizing Hormone beta antibody [EPR8195] (ab174265)

This data was developed using **ab221494**, the same antibody clone in a different buffer formulation.

Immunohistochemistry (Formalin/PFA-fixed paraffin-embedded sections) analysis of Human pituitary gland labelling ACTH with **ab233954** at 1/5000 dilution (0.214 µg/ml) (B), Luteinizing Hormone beta with **ab221494** at 1/4000 dilution (0.258 µg/ml) (C) and Growth Hormone with **ab155276** at 1/5000 dilution (0.044 µg/ml) (D). Opal Polymer HRP Ms + Rb was used as a secondary antibody, and DAPI was used for a nuclear counter stain. Heat mediated antigen retrieval with Tris-EDTA buffer (pH 9.0, epitope retrieval solution2) for 20 mins.

Panel A: merged staining of anti-Growth Hormone (gray; Opal™690), anti-ACTH (green; Opal™520) and anti-Luteinizing Hormone beta (red; Opal™570) on human pituitary gland.

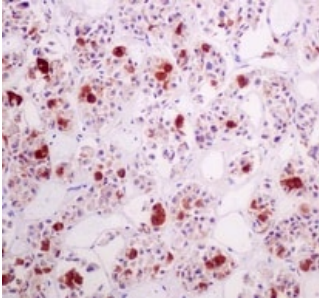
Panel B: anti-ACTH stained on corticotrophs.

Panel C: anti-Luteinizing Hormone beta stained on gonadotrophs.

Panel D: anti-Growth Hormone stained on somatotrophs.

The section was incubated in three rounds of staining: in the order of **ab155276**, **ab233954**, and **ab221494** for 30 mins at room temperature. Each round was followed by a separate fluorescent tyramide signal amplification system.

The immunostaining was performed on a Leica Biosystems BOND® RX instrument with an Opal™ 4-color kit. Image acquisition was performed with Leica SP8 confocal microscope.



Immunohistochemical analysis of paraffin-embedded Human pancreas tissue labeling Luteinizing Hormone beta with ab174265 at a 1/250 dilution.

Perform heat mediated antigen retrieval with citrate buffer pH 6 before commencing with IHC staining protocol.

Immunohistochemistry (Formalin/PFA-fixed paraffin-embedded sections) - Anti-Luteinizing Hormone beta antibody [EPR8195] (ab174265)

#### Why choose a recombinant antibody?



**Research with confidence**  
Consistent and reproducible results



**Long-term and scalable supply**  
Recombinant technology



**Success from the first experiment**  
Confirmed specificity



**Ethical standards compliant**  
Animal-free production

Anti-Luteinizing Hormone beta antibody [EPR8195] (ab174265)

**Please note:** All products are "FOR RESEARCH USE ONLY. NOT FOR USE IN DIAGNOSTIC PROCEDURES"

#### Our Abpromise to you: Quality guaranteed and expert technical support

- Replacement or refund for products not performing as stated on the datasheet
- Valid for 12 months from date of delivery

- Response to your inquiry within 24 hours
- We provide support in Chinese, English, French, German, Japanese and Spanish
- Extensive multi-media technical resources to help you
- We investigate all quality concerns to ensure our products perform to the highest standards

If the product does not perform as described on this datasheet, we will offer a refund or replacement. For full details of the Abpromise, please visit <https://www.abcam.com/abpromise> or contact our technical team.

### **Terms and conditions**

---

- Guarantee only valid for products bought direct from Abcam or one of our authorized distributors