





Product datasheet

Anti-LXR alpha + LXR beta antibody ab24362

★★★★★ [2 Abreviews](#) [7 References](#) [3 Images](#)

Overview

Product name	Anti-LXR alpha + LXR beta antibody
Description	Goat polyclonal to LXR alpha + LXR beta
Host species	Goat
Tested applications	Suitable for: Flow Cyt (Intra), ICC/IF, WB
Species reactivity	Reacts with: Human Predicted to work with: Rat, Chicken, Cow, Pig, Xenopus laevis, Zebrafish 
Immunogen	Peptide with sequence (C)RLQDKKLPLLSEI, from the C-terminus of the human protein sequences according to NP_005684; NP_009052.  Run BLAST with  Run BLAST with 
Positive control	WB: Human kidney and liver lysate; Flow Cyt (intra): A549 cells; ICC/IF: A549 cells.
General notes	<p>The Life Science industry has been in the grips of a reproducibility crisis for a number of years. Abcam is leading the way in addressing this with our range of recombinant monoclonal antibodies and knockout edited cell lines for gold-standard validation. Please check that this product meets your needs before purchasing.</p> <p>If you have any questions, special requirements or concerns, please send us an inquiry and/or contact our Support team ahead of purchase. Recommended alternatives for this product can be found below, along with publications, customer reviews and Q&As</p>

Properties

Form	Liquid
Storage instructions	Shipped at 4°C. Upon delivery aliquot and store at -20°C. Avoid freeze / thaw cycles.
Storage buffer	pH: 7.30 Preservative: 0.02% Sodium azide Constituents: Tris buffered saline, 0.5% BSA
Purity	Immunogen affinity purified
Purification notes	Purified from goat serum by ammonium sulphate precipitation followed by antigen affinity chromatography using the immunizing peptide.
Clonality	Polyclonal
Isotype	IgG

Applications

The Abpromise guarantee

Our **Abpromise guarantee** covers the use of ab24362 in the following tested applications.

The application notes include recommended starting dilutions; optimal dilutions/concentrations should be determined by the end user.

Application	Abreviews	Notes
Flow Cyt (Intra)		Use a concentration of 10 µg/ml.
ICC/IF		Use a concentration of 10 µg/ml.
WB	★★★★★ (2)	Use a concentration of 1 - 3 µg/ml. Detects a band of approximately 55 kDa (predicted molecular weight: 51 kDa). 1 hour primary incubation is recommended for this product.

Target

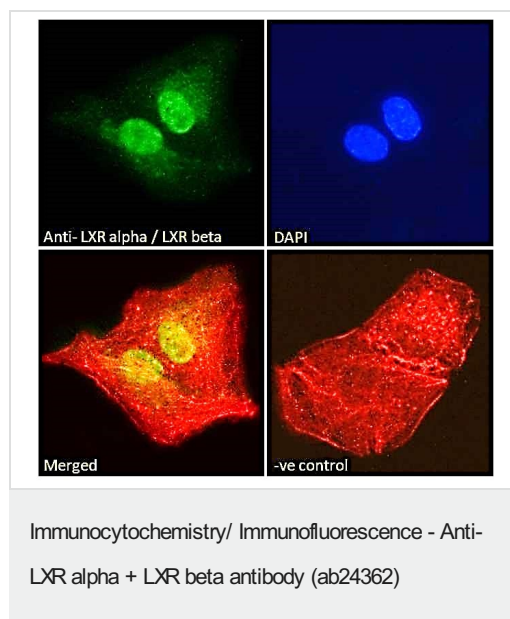
Relevance

LXR alpha and LXR beta are orphan receptors. Interaction with RXR shifts RXR from its role as a silent DNA binding partner to an active ligand binding subunit in mediating retinoid responses through target genes defined by LXRES. LXRES are DR4 type response elements characterized by direct repeats of two similar hexanucleotide half sites spaced by four nucleotides. Plays an important role in the regulation of cholesterol homeostasis. LXR alpha: Visceral organs specific expression. Strong expression was found in liver, kidney and intestine followed by spleen and to a lesser extent the adrenals. LXR beta: Ubiquitously expressed.

Cellular localization

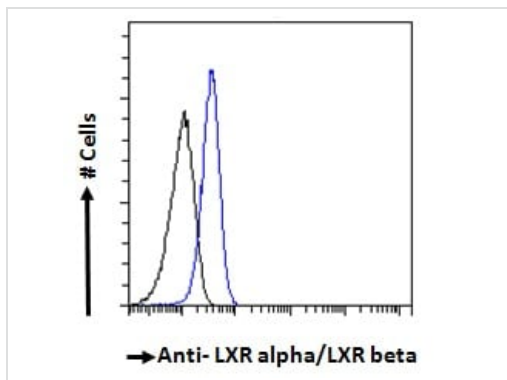
Nuclear

Images



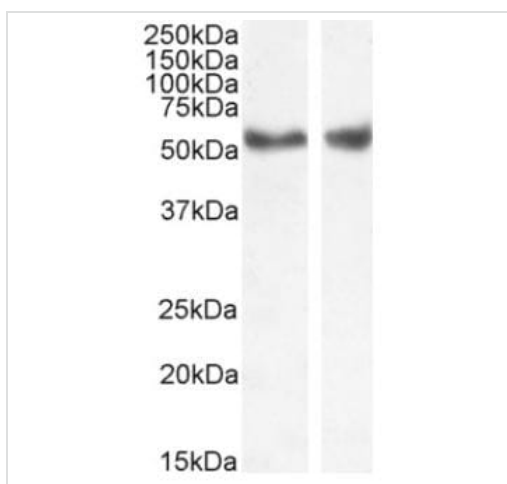
Immunocytochemical/Immunofluorescent analysis of paraformaldehyde-fixed, 0.15% triton permeabilized A549 cells labelling LXR alpha + LXR beta with ab24362 at 10µg/ml, followed by Alexa Fluor 488 secondary antibody at 2ug/ml. Actin filaments were stained with phalloidin (red) and the nuclear stain is DAPI (blue).

Negative control: Unimmunized goat IgG (10ug/ml) followed by Alexa Fluor 488 secondary antibody (2ug/ml).



Flow Cytometry (Intracellular) - Anti-LXR alpha + LXR beta antibody (ab24362)

Flow cytometric analysis of paraformaldehyde fixed A549 cells (blue line), permeabilized with 0.5% Triton, followed by Alexa Fluor 488 secondary antibody (1ug/ml). IgG control: Unimmunized goat IgG (black line) followed by Alexa Fluor 488 secondary antibody.



Western blot - Anti-LXR alpha + LXR beta antibody (ab24362)

All lanes : Anti-LXR alpha + LXR beta antibody (ab24362) at 1 µg/ml

Lane 1 : Human liver lysate in RIPA buffer

Lane 2 : Human kidney lysate in RIPA buffer

Lysates/proteins at 35 µg per lane.

Developed using the ECL technique.

Predicted band size: 51 kDa

Please note: All products are "FOR RESEARCH USE ONLY. NOT FOR USE IN DIAGNOSTIC PROCEDURES"

Our Abpromise to you: Quality guaranteed and expert technical support

- Replacement or refund for products not performing as stated on the datasheet
- Valid for 12 months from date of delivery
- Response to your inquiry within 24 hours
- We provide support in Chinese, English, French, German, Japanese and Spanish
- Extensive multi-media technical resources to help you
- We investigate all quality concerns to ensure our products perform to the highest standards

If the product does not perform as described on this datasheet, we will offer a refund or replacement. For full details of the Abpromise, please visit <https://www.abcam.com/abpromise> or contact our technical team.

Terms and conditions

- Guarantee only valid for products bought direct from Abcam or one of our authorized distributors