

## Product datasheet

# Anti-LXR alpha antibody ab106464

★★★★★ [2 Abreviews](#) [6 References](#) [3 Images](#)

### Overview

---

<b>Product name</b>	Anti-LXR alpha antibody
<b>Description</b>	Rabbit polyclonal to LXR alpha
<b>Host species</b>	Rabbit
<b>Specificity</b>	At least three isoforms of LXR alpha are known to exist; ab106464 will recognize all three. ab106464 is predicted to not crossreact with LXR beta.
<b>Tested applications</b>	<b>Suitable for:</b> ICC/IF, WB, IHC-P
<b>Species reactivity</b>	<b>Reacts with:</b> Rat
<b>Immunogen</b>	Synthetic peptide corresponding to 15 amino acids from near the N terminal end of Human LXR alpha (NP_005684).
<b>Positive control</b>	Rat liver tissue and tissue lysate.
<b>General notes</b>	<p>The Life Science industry has been in the grips of a reproducibility crisis for a number of years. Abcam is leading the way in addressing this with our range of recombinant monoclonal antibodies and knockout edited cell lines for gold-standard validation. Please check that this product meets your needs before purchasing.</p> <p>If you have any questions, special requirements or concerns, please send us an inquiry and/or contact our Support team ahead of purchase. Recommended alternatives for this product can be found below, along with publications, customer reviews and Q&amp;As</p>

### Properties

---

<b>Form</b>	Liquid
<b>Storage instructions</b>	Shipped at 4°C. Store at +4°C short term (1-2 weeks). Upon delivery aliquot. Store at -20°C long term.
<b>Storage buffer</b>	pH: 7.2 Preservative: 0.02% Sodium azide Constituent: 99% PBS
<b>Purity</b>	Immunogen affinity purified
<b>Purification notes</b>	ab106464 was purified by affinity chromatography via a peptide column.
<b>Clonality</b>	Polyclonal
<b>Isotype</b>	IgG

## Applications

### The Abpromise guarantee

Our **Abpromise guarantee** covers the use of ab106464 in the following tested applications.

The application notes include recommended starting dilutions; optimal dilutions/concentrations should be determined by the end user.

Application	Abreviews	Notes
ICC/IF		Use a concentration of 20 µg/ml.
WB	★★★★★ (2)	Use a concentration of 1 - 2 µg/ml. Predicted molecular weight: 50 kDa.
IHC-P		Use at an assay dependent concentration.

## Target

### Function

Orphan receptor. Interaction with RXR shifts RXR from its role as a silent DNA-binding partner to an active ligand-binding subunit in mediating retinoid responses through target genes defined by LXRES. LXRES are DR4-type response elements characterized by direct repeats of two similar hexanucleotide half-sites spaced by four nucleotides. Plays an important role in the regulation of cholesterol homeostasis, regulating cholesterol uptake through MYLIP-dependent ubiquitination of LDLR, VLDLR and LRP8.

### Tissue specificity

Visceral organs specific expression. Strong expression was found in liver, kidney and intestine followed by spleen and to a lesser extent the adrenals.

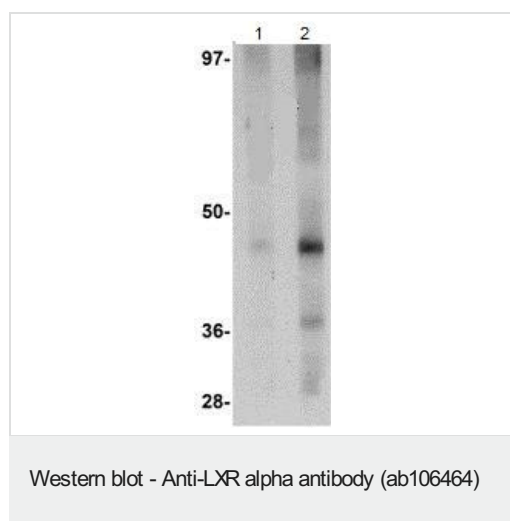
### Sequence similarities

Belongs to the nuclear hormone receptor family. NR1 subfamily.  
Contains 1 nuclear receptor DNA-binding domain.

### Cellular localization

Nucleus.

## Images



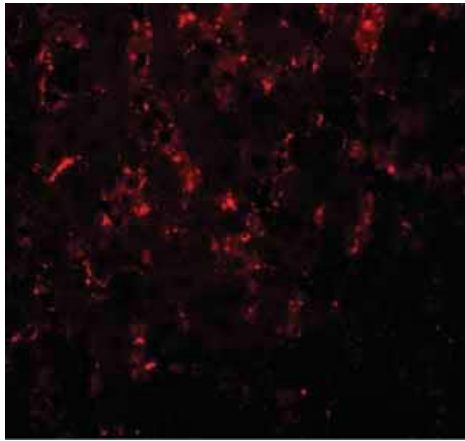
**Lane 1** : Anti-LXR alpha antibody (ab106464) at 1 µg/ml

**Lane 2** : Anti-LXR alpha antibody (ab106464) at 2 µg/ml

**All lanes** : Rat liver tissue lysate

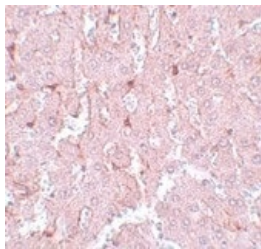
Lysates/proteins at 15 µg per lane.

**Predicted band size:** 50 kDa



Immunofluorescence of LXR alpha in rat liver tissue with ab106464 at 20 ug/mL.

Immunocytochemistry/ Immunofluorescence - Anti-LXR alpha antibody (ab106464)



Immunohistochemistry of rat liver tissue with ab106464 at 5 µg/mL

Immunohistochemistry (Formalin/PFA-fixed paraffin-embedded sections) - Anti-LXR alpha antibody (ab106464)

**Please note:** All products are "FOR RESEARCH USE ONLY. NOT FOR USE IN DIAGNOSTIC PROCEDURES"

### Our Abpromise to you: Quality guaranteed and expert technical support

---

- Replacement or refund for products not performing as stated on the datasheet
- Valid for 12 months from date of delivery
- Response to your inquiry within 24 hours
  
- We provide support in Chinese, English, French, German, Japanese and Spanish
- Extensive multi-media technical resources to help you
- We investigate all quality concerns to ensure our products perform to the highest standards

If the product does not perform as described on this datasheet, we will offer a refund or replacement. For full details of the Abpromise, please visit <https://www.abcam.com/abpromise> or contact our technical team.

### Terms and conditions

---

- Guarantee only valid for products bought direct from Abcam or one of our authorized distributors