


Product datasheet

Anti-LXR beta/NER antibody ab228867

3 Images

Overview

Product name	Anti-LXR beta/NER antibody
Description	Rabbit polyclonal to LXR beta/NER
Host species	Rabbit
Tested applications	Suitable for: ICC/IF, WB
Species reactivity	Reacts with: Mouse, Human Predicted to work with: Rat, Rabbit, Rhesus monkey 
Immunogen	Recombinant fragment within Human LXR beta/NER (internal sequence). The exact immunogen sequence used to generate this antibody is proprietary information. If additional detail on the immunogen is needed to determine the suitability of the antibody for your needs, please contact our Scientific Support team to discuss your requirements. Database link: P55055
Positive control	WB: Mouse brain lysate; HeLa whole cell lysate. ICC/IF: HeLa cells.
General notes	<p>The Life Science industry has been in the grips of a reproducibility crisis for a number of years. Abcam is leading the way in addressing this with our range of recombinant monoclonal antibodies and knockout edited cell lines for gold-standard validation. Please check that this product meets your needs before purchasing.</p> <p>If you have any questions, special requirements or concerns, please send us an inquiry and/or contact our Support team ahead of purchase. Recommended alternatives for this product can be found below, along with publications, customer reviews and Q&As</p>

Properties

Form	Liquid
Storage instructions	Shipped at 4°C. Store at +4°C short term (1-2 weeks). Upon delivery aliquot. Store at -20°C long term. Avoid freeze / thaw cycle.
Storage buffer	pH: 7.00 Preservative: 0.01% Thimerosal (merthiolate) Constituents: 1.21% Tris, 0.75% Glycine, 20% Glycerol (glycerin, glycerine)
Purity	Immunogen affinity purified
Clonality	Polyclonal
Isotype	IgG

Applications

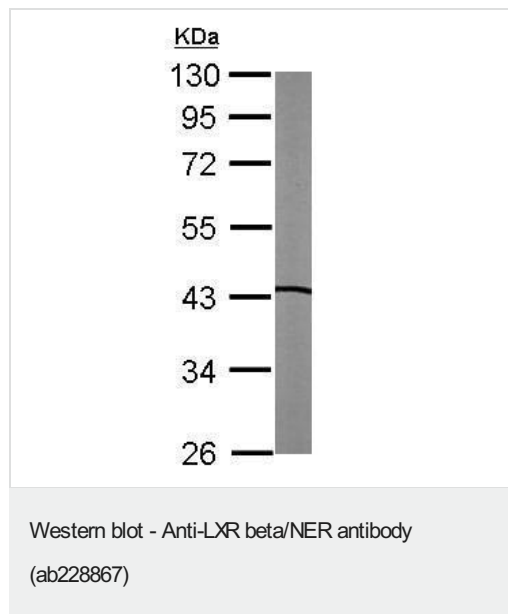
The Abpromise guarantee Our **Abpromise guarantee** covers the use of ab228867 in the following tested applications. The application notes include recommended starting dilutions; optimal dilutions/concentrations should be determined by the end user.

Application	Abreviews	Notes
ICC/IF		1/100 - 1/1000.
WB		1/500 - 1/3000. Predicted molecular weight: 50 kDa.

Target

Function	Orphan receptor. Binds preferentially to double-stranded oligonucleotide direct repeats having the consensus half-site sequence 5'-AGGTCA-3' and 4-nt spacing (DR-4). Regulates cholesterol uptake through MYLIP-dependent ubiquitination of LDLR, VLDLR and LRP8.
Tissue specificity	Ubiquitous.
Sequence similarities	Belongs to the nuclear hormone receptor family. NR1 subfamily. Contains 1 nuclear receptor DNA-binding domain.
Cellular localization	Nucleus.

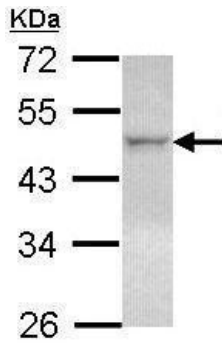
Images



Anti-LXR beta/NER antibody (ab228867) at 1/1000 dilution +
Mouse brain lysate at 50 µg

Predicted band size: 50 kDa

10% SDS-PAGE gel.

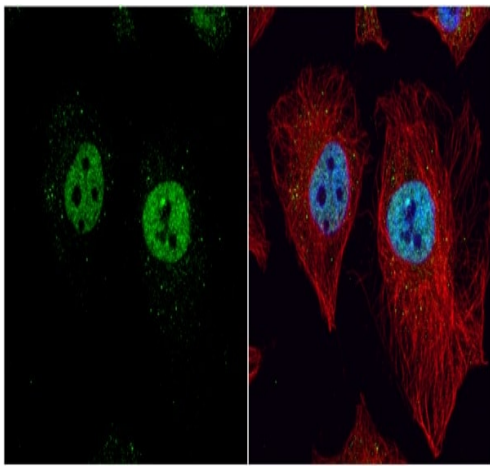


Western blot - Anti-LXR beta/NER antibody
(ab228867)

Anti-LXR beta/NER antibody (ab228867) at 1/1000 dilution + HeLa (human epithelial cell line from cervix adenocarcinoma) whole cell lysate at 30 µg

Predicted band size: 50 kDa

10% SDS-PAGE gel.



Immunocytochemistry/ Immunofluorescence - Anti-LXR beta/NER antibody (ab228867)

4% paraformaldehyde-fixed HeLa (human epithelial cell line from cervix adenocarcinoma) cells stained for LXR beta/NER (green) using ab228867 at 1/200 dilution in ICC/IF.

Nuclear counterstain: Hoechst 33342 (blue). Alpha Tubulin, a cytoskeleton marker, is detected with an alpha Tubulin antibody (red).

Please note: All products are "FOR RESEARCH USE ONLY. NOT FOR USE IN DIAGNOSTIC PROCEDURES"

Our Abpromise to you: Quality guaranteed and expert technical support

- Replacement or refund for products not performing as stated on the datasheet
- Valid for 12 months from date of delivery
- Response to your inquiry within 24 hours
- We provide support in Chinese, English, French, German, Japanese and Spanish
- Extensive multi-media technical resources to help you
- We investigate all quality concerns to ensure our products perform to the highest standards

If the product does not perform as described on this datasheet, we will offer a refund or replacement. For full details of the Abpromise,

please visit <https://www.abcam.com/abpromise> or contact our technical team.

Terms and conditions

- Guarantee only valid for products bought direct from Abcam or one of our authorized distributors