


## Product datasheet

# Anti-Ly-6A/E (Sca-1) antibody ab95439

★★★★☆ [1 Abreviews](#) [2 References](#) [1 Image](#)

### Overview

---

<b>Product name</b>	Anti-Ly-6A/E (Sca-1) antibody
<b>Description</b>	Rabbit polyclonal to Ly-6A/E (Sca-1)
<b>Host species</b>	Rabbit
<b>Tested applications</b>	<b>Suitable for:</b> WB
<b>Species reactivity</b>	<b>Reacts with:</b> Rat <b>Predicted to work with:</b> Mouse 
<b>Immunogen</b>	Synthetic peptide, corresponding to amino acids 91-108 of Rat Sca1/ Ly6A/E
<b>Positive control</b>	Rat heart, liver, testicular and brain tissue lysates.
<b>General notes</b>	<p>The Life Science industry has been in the grips of a reproducibility crisis for a number of years. Abcam is leading the way in addressing this with our range of recombinant monoclonal antibodies and knockout edited cell lines for gold-standard validation. Please check that this product meets your needs before purchasing.</p> <p>If you have any questions, special requirements or concerns, please send us an inquiry and/or contact our Support team ahead of purchase. Recommended alternatives for this product can be found below, along with publications, customer reviews and Q&amp;As</p>

### Properties

---

<b>Form</b>	Liquid
<b>Storage instructions</b>	Shipped at 4°C. Upon delivery aliquot and store at -20°C. Avoid repeated freeze / thaw cycles.
<b>Storage buffer</b>	Preservatives: 0.025% Sodium azide, 0.025% Thimerosal (merthiolate) Constituents: 2.5% BSA, 0.45% Sodium chloride, 0.1% Dibasic monohydrogen sodium phosphate
<b>Purity</b>	Immunogen affinity purified
<b>Clonality</b>	Polyclonal
<b>Isotype</b>	IgG

### Applications

---

**The Abpromise guarantee** Our **Abpromise guarantee** covers the use of ab95439 in the following tested applications.

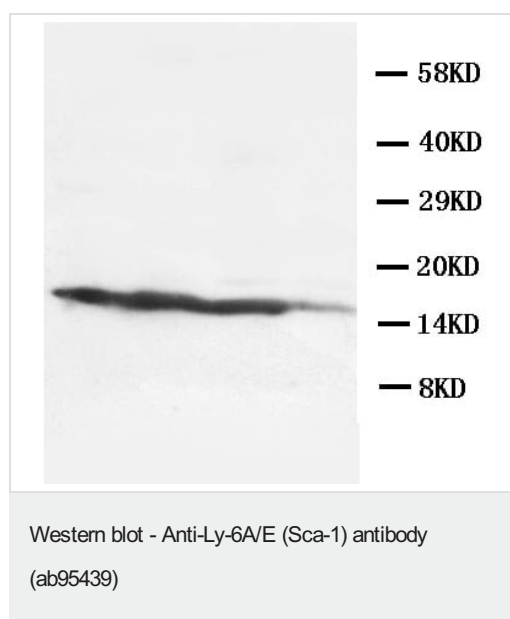
The application notes include recommended starting dilutions; optimal dilutions/concentrations should be determined by the end user.

Application	Abreviews	Notes
WB		Use a concentration of 1 µg/ml. Predicted molecular weight: 14 kDa.

## Target

<b>Function</b>	T-cell activation.
<b>Tissue specificity</b>	Widely expressed.
<b>Sequence similarities</b>	Contains 1 UPAR/Ly6 domain.
<b>Post-translational modifications</b>	O-glycosylated. Not N-glycosylated. Not phosphorylated.
<b>Cellular localization</b>	Cell membrane.

## Images



**All lanes :** Anti-Ly-6A/E (Sca-1) antibody (ab95439) at 1 µg/ml

**Lane 1 :** Rat heart tissue lysate

**Lane 2 :** Rat liver tissue lysate

**Lane 3 :** Rat testicular tissue lysate

**Lane 4 :** Rat brain tissue lysate

**Predicted band size:** 14 kDa

**Observed band size:** 16 kDa

**Please note:** All products are "FOR RESEARCH USE ONLY. NOT FOR USE IN DIAGNOSTIC PROCEDURES"

## Our Abpromise to you: Quality guaranteed and expert technical support

- Replacement or refund for products not performing as stated on the datasheet
- Valid for 12 months from date of delivery
- Response to your inquiry within 24 hours
- We provide support in Chinese, English, French, German, Japanese and Spanish
- Extensive multi-media technical resources to help you

- We investigate all quality concerns to ensure our products perform to the highest standards

If the product does not perform as described on this datasheet, we will offer a refund or replacement. For full details of the Abpromise, please visit <https://www.abcam.com/abpromise> or contact our technical team.

### **Terms and conditions**

---

- Guarantee only valid for products bought direct from Abcam or one of our authorized distributors