

Product datasheet

Anti-LYPLAL1 antibody ab77640

[2 References](#) [1 Image](#)

Overview

Product name	Anti-LYPLAL1 antibody
Description	Goat polyclonal to LYPLAL1
Host species	Goat
Tested applications	Suitable for: WB
Species reactivity	Reacts with: Human Predicted to work with: Rat, Horse, Cow, Dog, Chimpanzee, Macaque monkey, Orangutan



Immunogen	Synthetic peptide: DRFKITNDCPEHLE , corresponding to internal sequence amino acids 79-92 of Human LYPLAL1 (NP_620149.1) Run BLAST with Run BLAST with
------------------	--

General notes	<p>The Life Science industry has been in the grips of a reproducibility crisis for a number of years. Abcam is leading the way in addressing this with our range of recombinant monoclonal antibodies and knockout edited cell lines for gold-standard validation. Please check that this product meets your needs before purchasing.</p> <p>If you have any questions, special requirements or concerns, please send us an inquiry and/or contact our Support team ahead of purchase. Recommended alternatives for this product can be found below, along with publications, customer reviews and Q&As</p>
----------------------	---

Properties

Form	Liquid
Storage instructions	Shipped at 4°C. Upon delivery aliquot and store at -20°C or -80°C. Store in the dark. Avoid repeated freeze / thaw cycles.
Storage buffer	pH: 7.30 Preservative: 0.02% Sodium azide Constituents: 0.5% BSA, Tris buffered saline
Purity	Immunogen affinity purified
Purification notes	ab77640 was purified from goat serum by ammonium sulphate precipitation followed by antigen affinity chromatography using the immunizing peptide.
Clonality	Polyclonal

Isotype

IgG

Applications

The Abpromise guarantee

Our **Abpromise guarantee** covers the use of ab77640 in the following tested applications.

The application notes include recommended starting dilutions; optimal dilutions/concentrations should be determined by the end user.

Application	Abreviews	Notes
WB		

Application notes

Peptide ELISA: Use at an assay dependent dilution. Antibody detection limit dilution: 1/16000.
WB: Use at a concentration of 0.3 - 1 µg/ml. Detects a band of approximately 26 kDa (predicted molecular weight: 26 kDa).

Not yet tested in other applications.
Optimal dilutions/concentrations should be determined by the end user.

Target

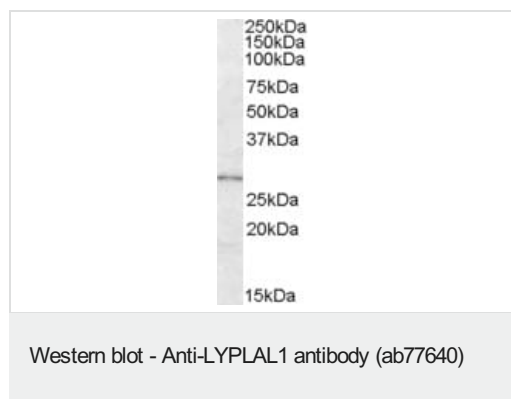
Sequence similarities

Belongs to the AB hydrolase 2 family.

Cellular localization

Cytoplasm.

Images



Anti-LYPLAL1 antibody (ab77640) at 0.3 µg/ml + Human adipose lysate in RIPA buffer at 35 µg

Predicted band size: 26 kDa

Observed band size: 28 kDa

Please note: All products are "FOR RESEARCH USE ONLY. NOT FOR USE IN DIAGNOSTIC PROCEDURES"

Our Abpromise to you: Quality guaranteed and expert technical support

- Replacement or refund for products not performing as stated on the datasheet
- Valid for 12 months from date of delivery
- Response to your inquiry within 24 hours

- We provide support in Chinese, English, French, German, Japanese and Spanish
- Extensive multi-media technical resources to help you
- We investigate all quality concerns to ensure our products perform to the highest standards

If the product does not perform as described on this datasheet, we will offer a refund or replacement. For full details of the Abpromise, please visit <https://www.abcam.com/abpromise> or contact our technical team.

Terms and conditions

- Guarantee only valid for products bought direct from Abcam or one of our authorized distributors