

### Anti-Mael antibody ab106713

★☆☆☆☆ [1 Abreviews](#) [4 References](#) [3 Images](#)

#### Overview

<b>Product name</b>	Anti-Mael antibody
<b>Description</b>	Rabbit polyclonal to Mael
<b>Host species</b>	Rabbit
<b>Tested applications</b>	<b>Suitable for:</b> WB, ICC, ICC/IF
<b>Species reactivity</b>	<b>Reacts with:</b> Human
<b>Immunogen</b>	A 16 amino acid peptide near the C terminus of Human Mael (NP_065199).
<b>Positive control</b>	Human skeletal muscle tissue; HeLa cell lysate
<b>General notes</b>	<p>The Life Science industry has been in the grips of a reproducibility crisis for a number of years. Abcam is leading the way in addressing this with our range of recombinant monoclonal antibodies and knockout edited cell lines for gold-standard validation. Please check that this product meets your needs before purchasing.</p> <p>If you have any questions, special requirements or concerns, please send us an inquiry and/or contact our Support team ahead of purchase. Recommended alternatives for this product can be found below, along with publications, customer reviews and Q&amp;As</p>

#### Properties

<b>Form</b>	Liquid
<b>Storage instructions</b>	Shipped at 4°C. Store at 4°C (stable for up to 12 months).
<b>Storage buffer</b>	pH: 7.2 Preservative: 0.02% Sodium azide Constituent: PBS
<b>Purity</b>	Immunogen affinity purified
<b>Clonality</b>	Polyclonal
<b>Isotype</b>	IgG

#### Applications

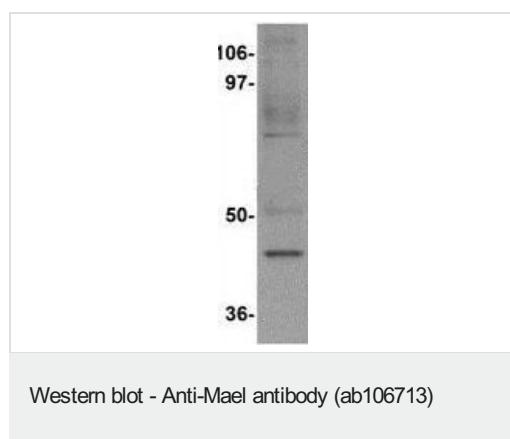
**The Abpromise guarantee** Our **Abpromise guarantee** covers the use of ab106713 in the following tested applications. The application notes include recommended starting dilutions; optimal dilutions/concentrations should be determined by the end user.

Application	Abreviews	Notes
WB		Use a concentration of 1 - 2 µg/ml. Predicted molecular weight: 49 kDa.
ICC		Use a concentration of 5 µg/ml.
ICC/IF		Use a concentration of 20 µg/ml.

## Target

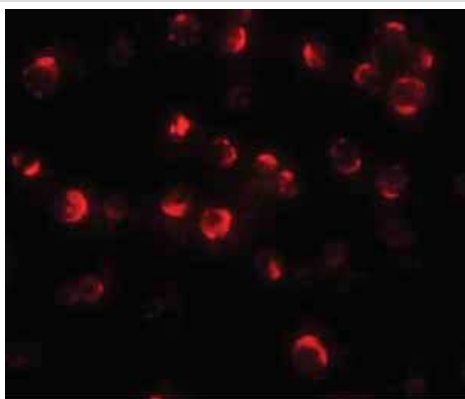
<b>Function</b>	Plays a central role during spermatogenesis by repressing transposable elements and prevent their mobilization, which is essential for the germline integrity. Acts via the piRNA metabolic process, which mediates the repression of transposable elements during meiosis by forming complexes composed of piRNAs and Piwi proteins and govern the methylation and subsequent repression of transposons. Its association with piP-bodies suggests a participation in the secondary piRNAs metabolic process. Required for localization of germ-cell factors to the meiotic nuage.
<b>Tissue specificity</b>	Testis-specific. Expressed in various cancer cell lines, probably due to demethylation of its promoter.
<b>Sequence similarities</b>	Belongs to the maelstrom family. Contains 1 HMG box DNA-binding domain.
<b>Cellular localization</b>	Cytoplasm. Nucleus. Component of the meiotic nuage, also named P granule, a germ-cell-specific organelle required to repress transposon during meiosis. Specifically localizes to piP-bodies, a subset of the nuage which contains secondary piRNAs.

## Images



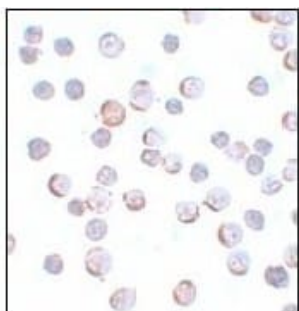
Anti-Mael antibody (ab106713) at 1 µg/ml + HeLa cell lysate at 15 µg

**Predicted band size:** 49 kDa



Immunofluorescence of Mael in HeLa cells with ab106713 at 20 ug/mL.

Immunocytochemistry/ Immunofluorescence - Anti-Mael antibody (ab106713)



ab106713, at 5 µg/ml, staining in Hela cells with Maelstrom by Immunocytochemistry.

Immunocytochemistry - Anti-Mael antibody (ab106713)

**Please note:** All products are "FOR RESEARCH USE ONLY. NOT FOR USE IN DIAGNOSTIC PROCEDURES"

### Our Abpromise to you: Quality guaranteed and expert technical support

- Replacement or refund for products not performing as stated on the datasheet
- Valid for 12 months from date of delivery
- Response to your inquiry within 24 hours
- We provide support in Chinese, English, French, German, Japanese and Spanish
- Extensive multi-media technical resources to help you
- We investigate all quality concerns to ensure our products perform to the highest standards

If the product does not perform as described on this datasheet, we will offer a refund or replacement. For full details of the Abpromise, please visit <https://www.abcam.com/abpromise> or contact our technical team.

## Terms and conditions

---

- Guarantee only valid for products bought direct from Abcam or one of our authorized distributors