



Product datasheet

Anti-MAGED1/NRAGE antibody - N-terminal ab180841

1 Image

Overview

Product name	Anti-MAGED1/NRAGE antibody - N-terminal
Description	Rabbit polyclonal to MAGED1/NRAGE - N-terminal
Host species	Rabbit
Tested applications	Suitable for: WB
Species reactivity	Reacts with: Human
Immunogen	Recombinant fragment corresponding to Human MAGED1/NRAGE aa 1-130 (N terminal). Sequence: MAQKMDCGAGLLGFQAEASVEDSALLMQLMEAIQISEA PPTNQATAAAS PQSSQPPTANEMADIQVSAAAARPKSAFKVQNATTKGPN GVYDFSQAHNA KDVPNTQPKAAFKSQNATPK GPNAAYDFSQ Database link: Q9Y5V3  Run BLAST with  Run BLAST with
Positive control	A549 cell lysate
General notes	<p>The Life Science industry has been in the grips of a reproducibility crisis for a number of years. Abcam is leading the way in addressing this with our range of recombinant monoclonal antibodies and knockout edited cell lines for gold-standard validation. Please check that this product meets your needs before purchasing.</p> <p>If you have any questions, special requirements or concerns, please send us an inquiry and/or contact our Support team ahead of purchase. Recommended alternatives for this product can be found below, along with publications, customer reviews and Q&As</p>

Properties

Form	Liquid
Storage instructions	Shipped at 4°C. Store at +4°C short term (1-2 weeks). Upon delivery aliquot. Store at -20°C long term. Avoid freeze / thaw cycle.
Storage buffer	pH: 7.30 Preservative: 0.02% Sodium azide Constituents: 49% PBS, 50% Glycerol

Purity	Immunogen affinity purified
Clonality	Polyclonal
Isotype	IgG

Applications

The Abpromise guarantee Our **Abpromise guarantee** covers the use of ab180841 in the following tested applications. The application notes include recommended starting dilutions; optimal dilutions/concentrations should be determined by the end user.

Application	Abreviews	Notes
WB		1/500 - 1/2000. Predicted molecular weight: 86 kDa.

Target

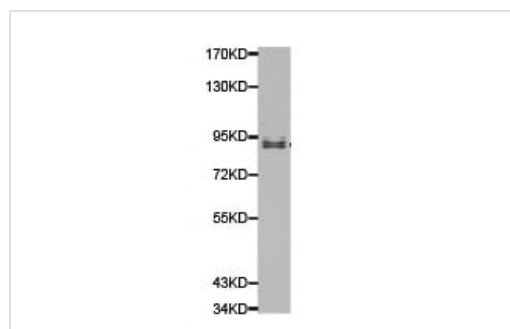
Function Involved in the apoptotic response after nerve growth factor (NGF) binding in neuronal cells. Inhibits cell cycle progression, and facilitates NGFR-mediated apoptosis. May act as a regulator of the function of DLX family members. May enhance ubiquitin ligase activity of RING-type zinc finger-containing E3 ubiquitin-protein ligases. Proposed to act through recruitment and/or stabilization of the Ubl-conjugating enzyme (E2) at the E3:substrate complex. Plays a role in the circadian rhythm regulation. May act as RORA co-regulator, modulating the expression of core clock genes such as ARNTL/BMAL1 and NFIL3, induced, or NR1D1, repressed.

Tissue specificity Expressed in bone marrow stromal cells from both multiple myeloma patients and healthy donors. Seems to be ubiquitously expressed.

Sequence similarities Contains 1 MAGE domain.

Cellular localization Cytoplasm. Cell membrane. Nucleus. Expression shifts from the cytoplasm to the plasma membrane upon stimulation with NGF.

Images



Anti-MAGED1/NRAGE antibody - N-terminal (ab180841) at 1/500 dilution + A549 cell lysate

Predicted band size: 86 kDa

Western blot - Anti-MAGED1/NRAGE antibody - N-terminal (ab180841)

Please note: All products are "FOR RESEARCH USE ONLY. NOT FOR USE IN DIAGNOSTIC PROCEDURES"

Our Abpromise to you: Quality guaranteed and expert technical support

- Replacement or refund for products not performing as stated on the datasheet
- Valid for 12 months from date of delivery
- Response to your inquiry within 24 hours

- We provide support in Chinese, English, French, German, Japanese and Spanish
- Extensive multi-media technical resources to help you
- We investigate all quality concerns to ensure our products perform to the highest standards

If the product does not perform as described on this datasheet, we will offer a refund or replacement. For full details of the Abpromise, please visit <https://www.abcam.com/abpromise> or contact our technical team.

Terms and conditions

- Guarantee only valid for products bought direct from Abcam or one of our authorized distributors