

## Product datasheet

# Anti-MAGP2 antibody ab232846

4 Images

### Overview

---

<b>Product name</b>	Anti-MAGP2 antibody
<b>Description</b>	Rabbit polyclonal to MAGP2
<b>Host species</b>	Rabbit
<b>Tested applications</b>	<b>Suitable for:</b> IHC-P, WB
<b>Species reactivity</b>	<b>Reacts with:</b> Mouse
<b>Immunogen</b>	Recombinant fragment (His-T7-tag) corresponding to Mouse MAGP2 aa 1 to the C-terminus. (Expressed in E.coli). Database link: <a href="#">Q9QZJ6</a>

 [Run BLAST with](#)

 [Run BLAST with](#)

<b>Positive control</b>	WB: Mouse heart and gallbladder lysates; Recombinant mouse MAGP2 protein. IHC-P: Mouse heart tissue.
-------------------------	--

### General notes

The Life Science industry has been in the grips of a reproducibility crisis for a number of years. Abcam is leading the way in addressing this with our range of recombinant monoclonal antibodies and knockout edited cell lines for gold-standard validation. Please check that this product meets your needs before purchasing.

If you have any questions, special requirements or concerns, please send us an inquiry and/or contact our Support team ahead of purchase. Recommended alternatives for this product can be found below, along with publications, customer reviews and Q&As

### Properties

---

<b>Form</b>	Liquid
<b>Storage instructions</b>	Shipped at 4°C. Store at +4°C short term (1-2 weeks). Upon delivery aliquot. Store at -20°C long term. Avoid freeze / thaw cycle.
<b>Storage buffer</b>	pH: 7.40 Preservative: 0.011% Proclin 300 Constituents: 55.77% Glycerol (glycerin, glycerine), 44.219% PBS
<b>Purity</b>	Immunogen affinity purified
<b>Purification notes</b>	Antigen-specific affinity chromatography followed by Protein A affinity chromatography.
<b>Clonality</b>	Polyclonal
<b>Isotype</b>	IgG

## Applications

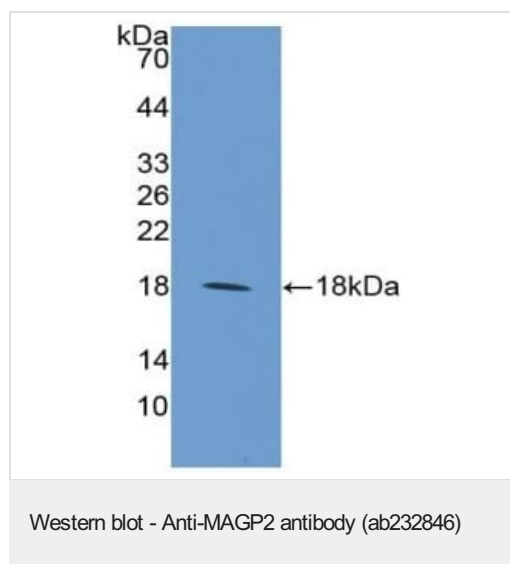
**The Abpromise guarantee** Our **Abpromise guarantee** covers the use of ab232846 in the following tested applications. The application notes include recommended starting dilutions; optimal dilutions/concentrations should be determined by the end user.

Application	Abreviews	Notes
IHC-P		Use a concentration of 5 - 20 µg/ml.
WB		Use a concentration of 0.2 - 2 µg/ml.

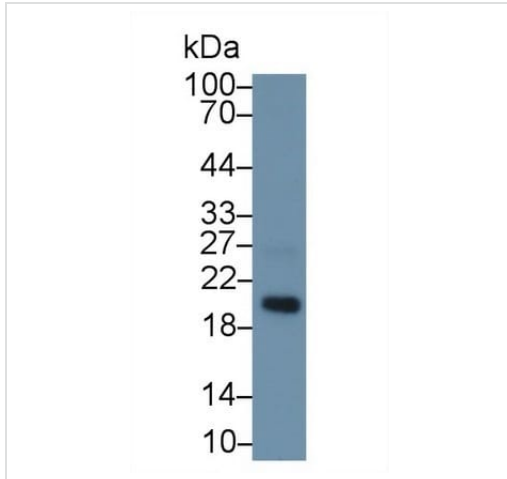
## Target

<b>Function</b>	Component of the elastin-associated microfibrils.
<b>Sequence similarities</b>	Belongs to the MFAP family.
<b>Post-translational modifications</b>	Forms intermolecular disulfide bonds either with other MAGP-2 molecules or with other components of the microfibrils.
<b>Cellular localization</b>	Secreted > extracellular space > extracellular matrix.

## Images

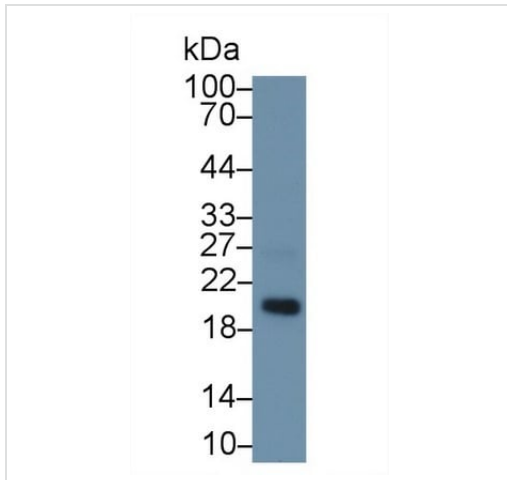


Anti-MAGP2 antibody (ab232846) at 1 µg/ml + Recombinant mouse MAGP2 protein



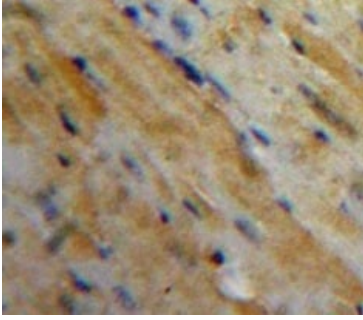
Western blot - Anti-MAGP2 antibody (ab232846)

Anti-MAGP2 antibody (ab232846) at 1  $\mu\text{g/ml}$  + Mouse gallbladder lysate



Western blot - Anti-MAGP2 antibody (ab232846)

Anti-MAGP2 antibody (ab232846) at 1  $\mu\text{g/ml}$  + Mouse heart lysate



Formalin-fixed, paraffin-embedded mouse heart tissue stained for MAGP2 using ab232846 at 20 µg/mL in immunohistochemical analysis. DAB staining.

Immunohistochemistry (Formalin/PFA-fixed paraffin-embedded sections) - Anti-MAGP2 antibody (ab232846)

**Please note:** All products are "FOR RESEARCH USE ONLY. NOT FOR USE IN DIAGNOSTIC PROCEDURES"

### Our Abpromise to you: Quality guaranteed and expert technical support

---

- Replacement or refund for products not performing as stated on the datasheet
- Valid for 12 months from date of delivery
- Response to your inquiry within 24 hours
- We provide support in Chinese, English, French, German, Japanese and Spanish
- Extensive multi-media technical resources to help you
- We investigate all quality concerns to ensure our products perform to the highest standards

If the product does not perform as described on this datasheet, we will offer a refund or replacement. For full details of the Abpromise, please visit <https://www.abcam.com/abpromise> or contact our technical team.

### Terms and conditions

---

- Guarantee only valid for products bought direct from Abcam or one of our authorized distributors