

## Product datasheet

# Anti-Mammaglobin A antibody [31A5] ab82203

★☆☆☆☆ [1 Abreviews](#) [3 References](#) [2 Images](#)

### Overview

---

<b>Product name</b>	Anti-Mammaglobin A antibody [31A5]
<b>Description</b>	Rabbit monoclonal [31A5] to Mammaglobin A
<b>Host species</b>	Rabbit
<b>Tested applications</b>	<b>Suitable for:</b> WB, ELISA, IHC-P
<b>Species reactivity</b>	<b>Reacts with:</b> Mouse, Human, Monkey
<b>Immunogen</b>	Recombinant full length protein corresponding to Human Mammaglobin A. Database link: <a href="#">Q13296</a>
<b>Positive control</b>	Breast carcinoma, skin (eccrine sweat glands).
<b>General notes</b>	<p>The Life Science industry has been in the grips of a reproducibility crisis for a number of years. Abcam is leading the way in addressing this with our range of recombinant monoclonal antibodies and knockout edited cell lines for gold-standard validation. Please check that this product meets your needs before purchasing.</p> <p>If you have any questions, special requirements or concerns, please send us an inquiry and/or contact our Support team ahead of purchase. Recommended alternatives for this product can be found below, along with publications, customer reviews and Q&amp;As</p>

### Properties

---

<b>Form</b>	Liquid
<b>Storage instructions</b>	Shipped at 4°C. Upon delivery aliquot and store at -20°C. Avoid freeze / thaw cycles.
<b>Storage buffer</b>	Preservative: 0.09% Sodium azide Constituents: PBS, 0.5% BSA
<b>Purity</b>	Affinity purified
<b>Clonality</b>	Monoclonal
<b>Clone number</b>	31A5
<b>Isotype</b>	IgG

### Applications

---

**The Abpromise guarantee** Our [Abpromise guarantee](#) covers the use of ab82203 in the following tested applications.

The application notes include recommended starting dilutions; optimal dilutions/concentrations should be determined by the end user.

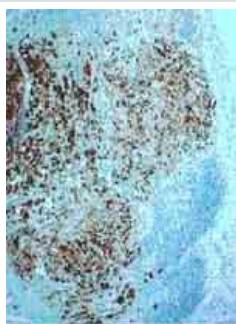
Application	Abreviews	Notes
WB		Use at an assay dependent concentration.
ELISA		Use at an assay dependent concentration.
IHC-P	★☆☆☆☆ (1)	Use a concentration of 1 µg/ml. Perform heat mediated antigen retrieval via the pressure cooker method before commencing with IHC staining protocol.

## Target

**Tissue specificity** Mammary gland specific. Over-expressed in breast cancer.

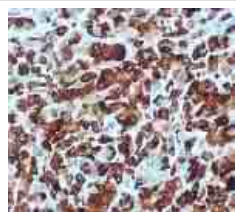
**Sequence similarities** Belongs to the secretoglobin family. Lipophilin subfamily.

## Images



ab82203 at 1µg/ml staining Mammaglobin A in sentinel lymph nodes in metastasis of breast carcinoma.

Immunohistochemistry (Formalin/PFA-fixed paraffin-embedded sections) - Anti-Mammaglobin A antibody [31A5] (ab82203)



ab82203 at 1µg/ml staining Mammaglobin A over-expression in breast carcinoma in situ.

Immunohistochemistry (Formalin/PFA-fixed paraffin-embedded sections) - Anti-Mammaglobin A antibody [31A5] (ab82203)

**Please note:** All products are "FOR RESEARCH USE ONLY. NOT FOR USE IN DIAGNOSTIC PROCEDURES"

## **Our Abpromise to you: Quality guaranteed and expert technical support**

---

- Replacement or refund for products not performing as stated on the datasheet
- Valid for 12 months from date of delivery
- Response to your inquiry within 24 hours
  
- We provide support in Chinese, English, French, German, Japanese and Spanish
- Extensive multi-media technical resources to help you
- We investigate all quality concerns to ensure our products perform to the highest standards

If the product does not perform as described on this datasheet, we will offer a refund or replacement. For full details of the Abpromise, please visit <https://www.abcam.com/abpromise> or contact our technical team.

## **Terms and conditions**

---

- Guarantee only valid for products bought direct from Abcam or one of our authorized distributors