

Anti-MAN2B1 antibody ab104521

[2 Images](#)

Overview

Product name	Anti-MAN2B1 antibody
Description	Rabbit polyclonal to MAN2B1
Host species	Rabbit
Tested applications	Suitable for: WB
Species reactivity	Reacts with: Human
Immunogen	Recombinant full length protein within Human MAN2B1. The exact immunogen sequence used to generate this antibody is proprietary information. If additional detail on the immunogen is needed to determine the suitability of the antibody for your needs, please contact our Scientific Support team to discuss your requirements.
Positive control	MAN2B1 transfected 293T cell line lysate. HepG2 cell line lysate.
General notes	<p>The Life Science industry has been in the grips of a reproducibility crisis for a number of years. Abcam is leading the way in addressing this with our range of recombinant monoclonal antibodies and knockout edited cell lines for gold-standard validation. Please check that this product meets your needs before purchasing.</p> <p>If you have any questions, special requirements or concerns, please send us an inquiry and/or contact our Support team ahead of purchase. Recommended alternatives for this product can be found below, along with publications, customer reviews and Q&As</p>

Properties

Form	Liquid
Storage instructions	Shipped at 4°C. Upon delivery aliquot. Store at -20°C or -80°C. Avoid freeze / thaw cycle.
Storage buffer	pH: 7.40 Constituents: 8% Sodium chloride, 0.6% Dibasic monohydrogen sodium phosphate, 0.2% Monobasic dihydrogen potassium phosphate, 0.2% Potassium chloride, 91% Water
Purity	Protein A purified
Clonality	Polyclonal
Isotype	IgG

Applications

The Abpromise guarantee

Our **Abpromise guarantee** covers the use of ab104521 in the following tested applications.

The application notes include recommended starting dilutions; optimal dilutions/concentrations should be determined by the end user.

Application	Abreviews	Notes
WB		1/500. Predicted molecular weight: 114 kDa.

Target

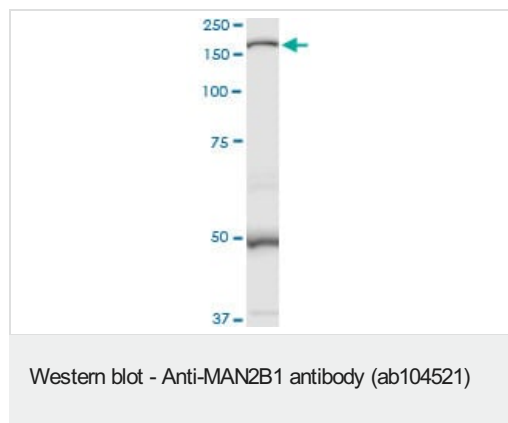
Relevance

MAN2B1 is necessary for the catabolism of N-linked carbohydrates released during glycoprotein turnover. It cleaves all known types of alpha-mannosidic linkages.

Cellular localization

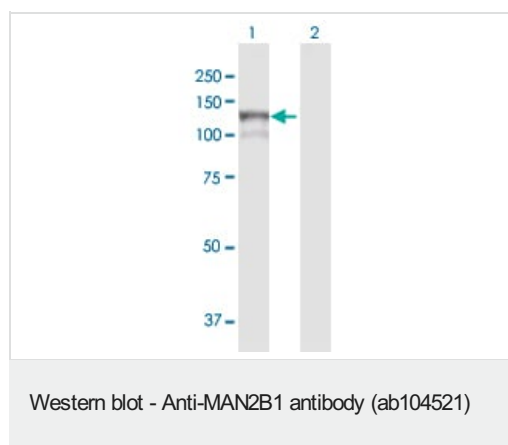
Lysosome

Images



Anti-MAN2B1 antibody (ab104521) at 1/500 dilution + HepG2 cell line lysate at 50 µg

Predicted band size: 114 kDa



All lanes : Anti-MAN2B1 antibody (ab104521) at 1/500 dilution

Lane 1 : MAN2B1 transfected 293T cell line lysate

Lane 2 : Non transfected 293T cell line lysate

Lysates/proteins at 25 µg per lane.

Predicted band size: 114 kDa

Please note: All products are "FOR RESEARCH USE ONLY. NOT FOR USE IN DIAGNOSTIC PROCEDURES"

Our Abpromise to you: Quality guaranteed and expert technical support

- Replacement or refund for products not performing as stated on the datasheet
- Valid for 12 months from date of delivery

- Response to your inquiry within 24 hours
- We provide support in Chinese, English, French, German, Japanese and Spanish
- Extensive multi-media technical resources to help you
- We investigate all quality concerns to ensure our products perform to the highest standards

If the product does not perform as described on this datasheet, we will offer a refund or replacement. For full details of the Abpromise, please visit <https://www.abcam.com/abpromise> or contact our technical team.

Terms and conditions

- Guarantee only valid for products bought direct from Abcam or one of our authorized distributors