


## Product datasheet

# Anti-MARCKS like protein antibody [EPR15353] - C-terminal ab184546

Recombinant RabMAb

[3 References](#) [6 Images](#)

### Overview

<b>Product name</b>	Anti-MARCKS like protein antibody [EPR15353] - C-terminal
<b>Description</b>	Rabbit monoclonal [EPR15353] to MARCKS like protein - C-terminal
<b>Host species</b>	Rabbit
<b>Tested applications</b>	<b>Suitable for:</b> Flow Cyt (Intra), WB, IHC-P, ICC/IF
<b>Species reactivity</b>	<b>Reacts with:</b> Human <b>Predicted to work with:</b> Mouse, Rat 
<b>Immunogen</b>	Synthetic peptide. This information is proprietary to Abcam and/or its suppliers.
<b>Positive control</b>	293T, SH-SY5Y and Human fetal brain lysates; Human colon tissue; 293T and SH-SY5Y cells.
<b>General notes</b>	This product is a recombinant monoclonal antibody, which offers several advantages including: <ul style="list-style-type: none"><li>- High batch-to-batch consistency and reproducibility</li><li>- Improved sensitivity and specificity</li><li>- Long-term security of supply</li><li>- Animal-free production</li></ul> For more information <a href="#">see here</a> . Our RabMAb <sup>®</sup> technology is a patented hybridoma-based technology for making rabbit monoclonal antibodies. For details on our patents, please refer to <a href="#">RabMAb<sup>®</sup> patents</a> .

### Properties

<b>Form</b>	Liquid
<b>Storage instructions</b>	Shipped at 4°C. Store at +4°C short term (1-2 weeks). Upon delivery aliquot. Store at -20°C long term. Avoid freeze / thaw cycle.
<b>Storage buffer</b>	pH: 7.2 Preservative: 0.01% Sodium azide Constituents: 59% PBS, 40% Glycerol (glycerin, glycerine), 0.05% BSA
<b>Purity</b>	Protein A purified
<b>Clonality</b>	Monoclonal
<b>Clone number</b>	EPR15353

Isotype

IgG

## Applications

### The Abpromise guarantee

Our **Abpromise guarantee** covers the use of ab184546 in the following tested applications.

The application notes include recommended starting dilutions; optimal dilutions/concentrations should be determined by the end user.

Application	Abreviews	Notes
Flow Cyt (Intra)		1/140. <b>ab172730</b> - Rabbit monoclonal IgG, is suitable for use as an isotype control with this antibody.
WB		1/10000 - 1/50000. Detects a band of approximately 42-48 kDa (predicted molecular weight: 20 kDa).
IHC-P		1/100. Perform heat mediated antigen retrieval with Tris/EDTA buffer pH 9.0 before commencing with IHC staining protocol.
ICC/IF		1/250.

## Target

### Function

May be involved in coupling the protein kinase C and calmodulin signal transduction systems.

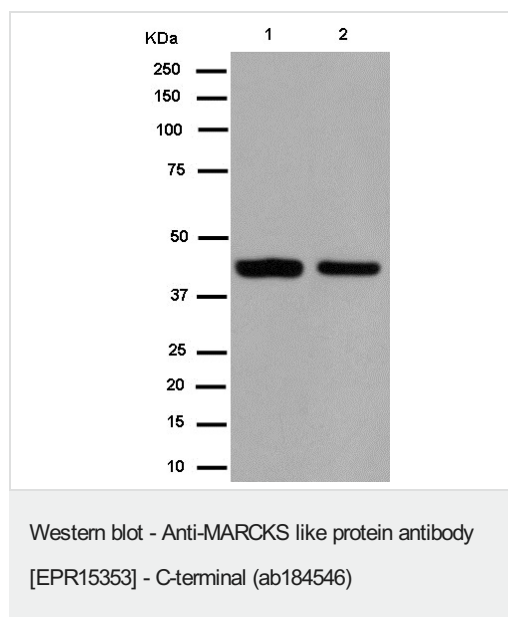
### Sequence similarities

Belongs to the MARCKS family.

### Post-translational modifications

Phosphorylated upon DNA damage, probably by ATM or ATR.

## Images



**All lanes** : Anti-MARCKS like protein antibody [EPR15353] - C-terminal (ab184546) at 1/10000 dilution

**Lane 1** : 293T cell lysate

**Lane 2** : SH-SY5Y cell lysate

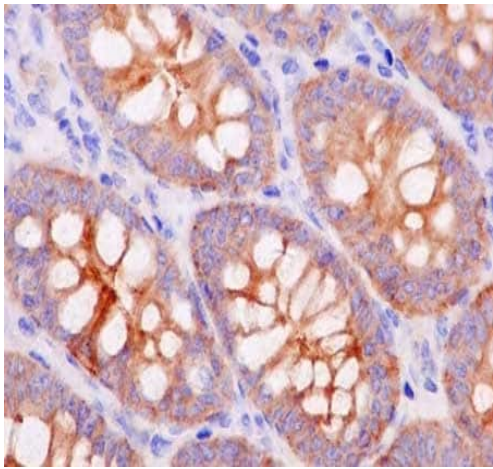
Lysates/proteins at 20 µg per lane.

### Secondary

**All lanes** : Goat Anti-Rabbit IgG, (H+L), Peroxidase conjugated at 1/1000 dilution

**Predicted band size:** 20 kDa

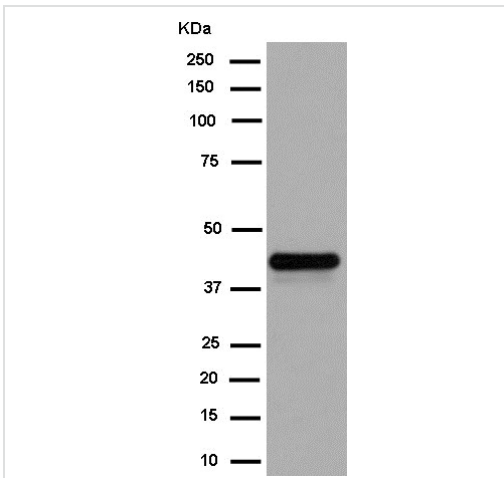
The protein has a calculated molecular weight of 20 kDa and an apparent molecular weight of 42-48 kDa due to anomalous migration on SDS gels or phosphorylation



Immunohistochemistry (Formalin/PFA-fixed paraffin-embedded sections) - Anti-MARCKS like protein antibody [EPR15353] - C-terminal (ab184546)

Immunohistochemical analysis of Paraffin-embedded Human colon tissue labeling MARCKS like protein with ab184546 at 1/100 dilution followed by pre-diluted HRP-conjugated secondary antibody and counter-stained with Hematoxylin.

Perform heat mediated antigen retrieval with EDTA buffer pH 9 before commencing with IHC staining protocol.



Western blot - Anti-MARCKS like protein antibody [EPR15353] - C-terminal (ab184546)

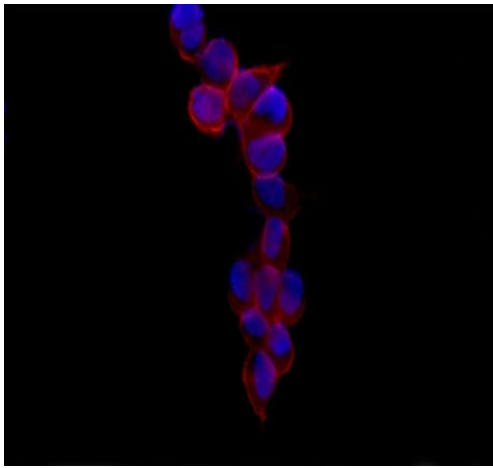
Anti-MARCKS like protein antibody [EPR15353] - C-terminal (ab184546) at 1/50000 dilution + Human fetal brain tissue lysate at 20  $\mu$ g

#### Secondary

Goat Anti-Rabbit IgG, (H+L), Peroxidase conjugated at 1/1000 dilution

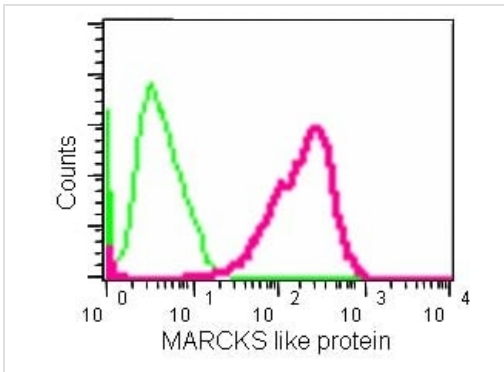
**Predicted band size:** 20 kDa

The protein has a calculated molecular weight of 20 kDa and an apparent molecular weight of 42-48 kDa due to anomalous migration on SDS gels or phosphorylation.



Immunocytochemistry/ Immunofluorescence - Anti-MARCKS like protein antibody [EPR15353] - C-terminal (ab184546)

Immunofluorescent analysis of 293T cells (4% paraformaldehyde-fixed) labeling MARCKS like protein with ab184546 at 1/250 dilution (red) followed by Goat anti rabbit IgG (AlexaFluor® 555) secondary at 1/200 dilution and counter-stained with DAPI (blue).



Flow Cytometry (Intracellular) - Anti-MARCKS like protein antibody [EPR15353] - C-terminal (ab184546)

Intracellular flow cytometric analysis of SH-SY5Y cells (2% paraformaldehyde-fixed) labeling MARCKS like protein with ab184546 at 1/140 dilution (red) or a rabbit IgG (negative) (green), followed by Goat anti rabbit IgG (FITC) secondary at 1/150 dilution.

### Why choose a recombinant antibody?



**Research with confidence**  
Consistent and reproducible results



**Long-term and scalable supply**  
Recombinant technology



**Success from the first experiment**  
Confirmed specificity



**Ethical standards compliant**  
Animal-free production

Anti-MARCKS like protein antibody [EPR15353] - C-terminal (ab184546)

**Please note:** All products are "FOR RESEARCH USE ONLY. NOT FOR USE IN DIAGNOSTIC PROCEDURES"

### Our Abpromise to you: Quality guaranteed and expert technical support

---

- Replacement or refund for products not performing as stated on the datasheet
- Valid for 12 months from date of delivery
- Response to your inquiry within 24 hours
- We provide support in Chinese, English, French, German, Japanese and Spanish
- Extensive multi-media technical resources to help you
- We investigate all quality concerns to ensure our products perform to the highest standards

If the product does not perform as described on this datasheet, we will offer a refund or replacement. For full details of the Abpromise, please visit <https://www.abcam.com/abpromise> or contact our technical team.

### Terms and conditions

---

- Guarantee only valid for products bought direct from Abcam or one of our authorized distributors