

Product datasheet

Anti-Mast Cell Chymase antibody [EPR13136] - C-terminal ab186417

Recombinant RabMAb

★★★★★ [2 Abreviews](#) [7 References](#) [3 Images](#)

Overview

Product name	Anti-Mast Cell Chymase antibody [EPR13136] - C-terminal
Description	Rabbit monoclonal [EPR13136] to Mast Cell Chymase - C-terminal
Host species	Rabbit
Specificity	Not suitable for mouse or rat samples. Gave high background in IHC-P during initial testing.
Tested applications	Suitable for: WB, IHC-P
Species reactivity	Reacts with: Human Does not react with: Mouse, Rat
Immunogen	Synthetic peptide. This information is proprietary to Abcam and/or its suppliers.
Positive control	Human small intestine tissue lysate and Human colon tissue
General notes	<p>This product is a recombinant monoclonal antibody, which offers several advantages including:</p> <ul style="list-style-type: none"> - High batch-to-batch consistency and reproducibility - Improved sensitivity and specificity - Long-term security of supply - Animal-free production <p>For more information see here.</p> <p>Our RabMAb[®] technology is a patented hybridoma-based technology for making rabbit monoclonal antibodies. For details on our patents, please refer to RabMAb[®] patents.</p>

Properties

Form	Liquid
Storage instructions	Shipped at 4°C. Store at +4°C short term (1-2 weeks). Upon delivery aliquot. Store at -20°C long term. Avoid freeze / thaw cycle.
Storage buffer	<p>pH: 7.2</p> <p>Preservative: 0.01% Sodium azide</p> <p>Constituents: 59% PBS, 40% Glycerol (glycerin, glycerine), 0.05% BSA</p>
Purity	Protein A purified
Clonality	Monoclonal

Clone number EPR13136

Isotype IgG

Applications

The Abpromise guarantee Our **Abpromise guarantee** covers the use of ab186417 in the following tested applications. The application notes include recommended starting dilutions; optimal dilutions/concentrations should be determined by the end user.

Application	Abreviews	Notes
WB	★★★★★ (1)	1/10000 - 1/50000. Detects a band of approximately 27 kDa (predicted molecular weight: 27 kDa).
IHC-P	★★★★★ (1)	1/500. Perform heat mediated antigen retrieval with Tris/EDTA buffer pH 9.0 before commencing with IHC staining protocol.

Target

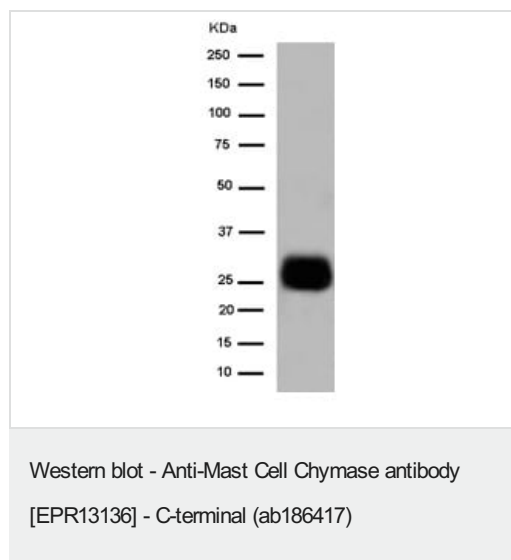
Function Major secreted protease of mast cells with suspected roles in vasoactive peptide generation, extracellular matrix degradation, and regulation of gland secretion.

Tissue specificity Mast cells in lung, heart, skin and placenta. Expressed in both normal skin and in urticaria pigmentosa lesions.

Sequence similarities Belongs to the peptidase S1 family. Granzyme subfamily. Contains 1 peptidase S1 domain.

Cellular localization Secreted. Cytoplasmic granule. Mast cell granules.

Images



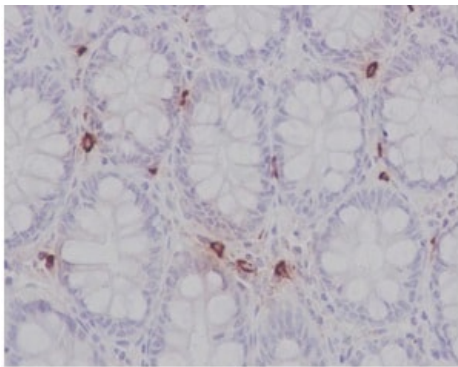
Anti-Mast Cell Chymase antibody [EPR13136] - C-terminal (ab186417) at 1/10000 dilution + Human small intestine tissue lysate at 20 µg

Secondary

Goat Anti-Rabbit IgG, (H+L), Peroxidase conjugated at 1/1000 dilution

Predicted band size: 27 kDa

Observed band size: 27 kDa



Immunohistochemistry (Formalin/PFA-fixed paraffin-embedded sections) - Anti-Mast Cell Chymase antibody [EPR13136] - C-terminal (ab186417)

Immunohistochemical analysis of paraffin embedded Human colon tissue labeling Mast Cell Chymase with ab186417 at 1/500 dilution. Secondary staining with HRP Polymer for Rabbit IgG and counterstained with Hematoxylin.

Perform heat mediated antigen retrieval with EDTA buffer pH 9 before commencing with IHC staining protocol.

Why choose a recombinant antibody?



Research with confidence
Consistent and reproducible results



Long-term and scalable supply
Recombinant technology



Success from the first experiment
Confirmed specificity



Ethical standards compliant
Animal-free production

Anti-Mast Cell Chymase antibody [EPR13136] - C-terminal (ab186417)

Please note: All products are "FOR RESEARCH USE ONLY. NOT FOR USE IN DIAGNOSTIC PROCEDURES"

Our Abpromise to you: Quality guaranteed and expert technical support

- Replacement or refund for products not performing as stated on the datasheet
- Valid for 12 months from date of delivery
- Response to your inquiry within 24 hours
- We provide support in Chinese, English, French, German, Japanese and Spanish
- Extensive multi-media technical resources to help you
- We investigate all quality concerns to ensure our products perform to the highest standards

If the product does not perform as described on this datasheet, we will offer a refund or replacement. For full details of the Abpromise, please visit <https://www.abcam.com/abpromise> or contact our technical team.

Terms and conditions

- Guarantee only valid for products bought direct from Abcam or one of our authorized distributors