

## Product datasheet

# Anti-MAT2A + MAT1A antibody [EPR10496] ab177484

Recombinant RabMAb

[2 References](#) [6 Images](#)

### Overview

<b>Product name</b>	Anti-MAT2A + MAT1A antibody [EPR10496]
<b>Description</b>	Rabbit monoclonal [EPR10496] to MAT2A + MAT1A
<b>Host species</b>	Rabbit
<b>Tested applications</b>	<b>Suitable for:</b> Flow Cyt (Intra), WB, ICC/IF
<b>Species reactivity</b>	<b>Reacts with:</b> Mouse, Rat, Human, Recombinant fragment
<b>Immunogen</b>	Synthetic peptide within Human MAT1A aa 50-150. The exact sequence is proprietary. Database link: <a href="#">P31153</a>
<b>Positive control</b>	ICC/IF: HeLa cells; WB: Human MAT1A/2A recombinant protein, HeLa, HepG2, Ramos, 293T, NIH/3T3 and C6 whole cell lysates; Flow Cyt (intra): Ramos and HeLa cells.
<b>General notes</b>	<p>This product is a recombinant monoclonal antibody, which offers several advantages including:</p> <ul style="list-style-type: none"><li>- High batch-to-batch consistency and reproducibility</li><li>- Improved sensitivity and specificity</li><li>- Long-term security of supply</li><li>- Animal-free production</li></ul> <p>For more information <a href="#">see here</a>.</p> <p>Our RabMAb<sup>®</sup> technology is a patented hybridoma-based technology for making rabbit monoclonal antibodies. For details on our patents, please refer to <a href="#">RabMAb<sup>®</sup> patents</a>.</p>

### Properties

<b>Form</b>	Liquid
<b>Storage instructions</b>	Shipped at 4°C. Store at +4°C short term (1-2 weeks). Upon delivery aliquot. Store at -20°C long term. Avoid freeze / thaw cycle.
<b>Storage buffer</b>	pH: 7.20 Preservative: 0.01% Sodium azide Constituents: 59% PBS, 40% Glycerol (glycerin, glycerine), 0.05% BSA
<b>Purity</b>	Protein A purified
<b>Clonality</b>	Monoclonal
<b>Clone number</b>	EPR10496

Isotype

IgG

## Applications

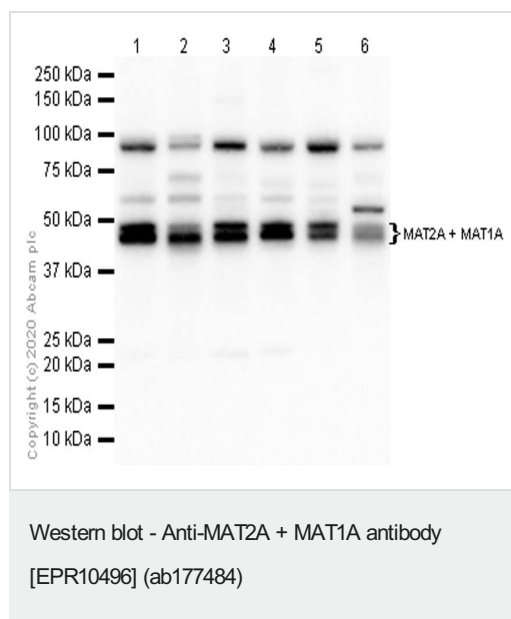
### The Abpromise guarantee

Our **Abpromise guarantee** covers the use of ab177484 in the following tested applications.

The application notes include recommended starting dilutions; optimal dilutions/concentrations should be determined by the end user.

Application	Abreviews	Notes
Flow Cyt (Intra)		1/30.
WB		1/1000 - 1/5000. Detects a band of approximately 44 kDa (predicted molecular weight: 44 kDa).
ICC/IF		1/100.

## Images



**All lanes** : Anti-MAT2A + MAT1A antibody [EPR10496] (ab177484) at 1/1000 dilution (Purified)

**Lane 1** : HeLa (Human cervix adenocarcinoma epithelial cell) whole cell lysate

**Lane 2** : HepG2 (Human hepatocellular carcinoma epithelial cell) whole cell lysate

**Lane 3** : Ramos (Human Burkitt's lymphoma B lymphocyte) whole cell lysate

**Lane 4** : 293T (Human embryonic kidney epithelial cell) whole cell lysate

**Lane 5** : NIH/3T3 (Mouse embryonic fibroblast) whole cell lysate

**Lane 6** : C6 (Rat glial tumor glial cell) whole cell lysate

Lysates/proteins at 20 µg per lane.

### Secondary

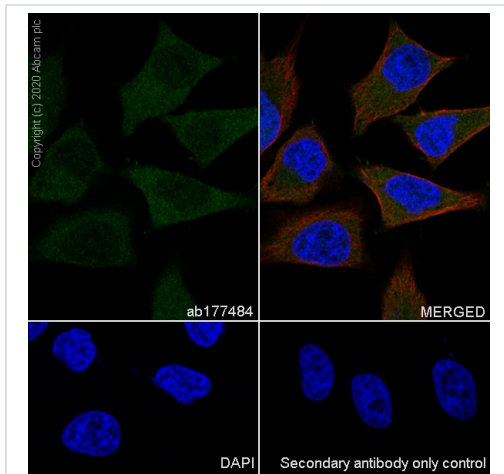
**All lanes** : Goat Anti-Rabbit IgG H&L (HRP) (**ab97051**) at 1/20000 dilution

**Predicted band size:** 44 kDa

**Observed band size:** 44, 46 kDa

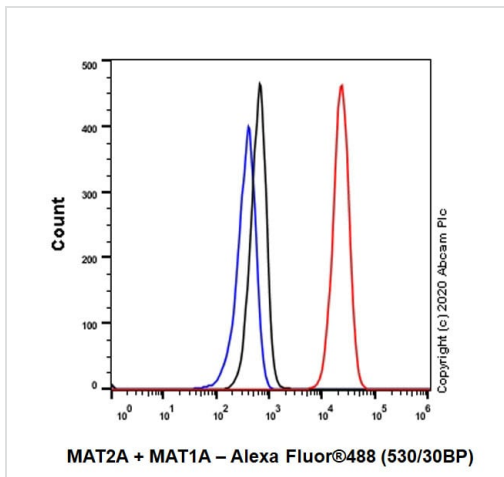
MAT1A: 44kDa ; MAT2A: 46kDa

Blocking Buffer and concentration: 5% NFDM/TBST



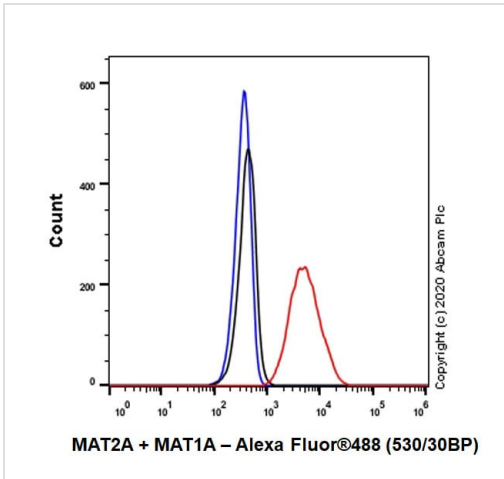
Immunocytochemistry analysis of HeLa (Human cervix adenocarcinoma epithelial cell) cells labeling MAT2A+MAT1A with Purified ab177484 at 1:100 dilution (2.52 µg/ml). Cells were fixed in 4% Paraformaldehyde and permeabilized with 0.1% tritonX-100. Cells were counterstained with Ab195889 Anti-alpha Tubulin antibody [DM1A] - Microtubule Marker (Alexa Fluor® 594) 1:200 (2.5 µg/ml). Goat anti rabbit IgG (Alexa Fluor® 488, **ab150077**) was used as the secondary antibody at 1:1000 (2 µg/ml) dilution. DAPI (blue) was used as nuclear counterstain. PBS instead of the primary antibody was used as the secondary antibody only control.

Immunocytochemistry/ Immunofluorescence - Anti-MAT2A + MAT1A antibody [EPR10496] (ab177484)



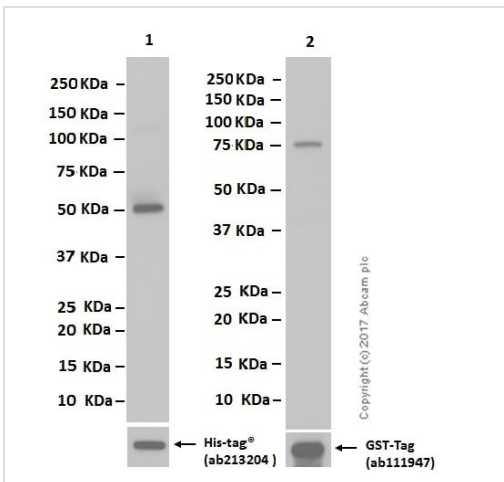
Intracellular Flow Cytometry analysis of Ramos (Human Burkitt's lymphoma B lymphocyte) cells labeling MAT2A+MAT1A with Purified ab177484 at 1/30 dilution (10 µg/ml) (Red). Cells were fixed with 4% Paraformaldehyde and permeabilised with 90% Methanol. A Goat anti rabbit IgG (Alexa Fluor® 488, **ab150077**) secondary antibody was used at 1/2000. Isotype control - Rabbit monoclonal IgG (Black). Unlabeled control - Cell without incubation with primary antibody and secondary antibody (Blue).

Flow Cytometry (Intracellular) - Anti-MAT2A + MAT1A antibody [EPR10496] (ab177484)



Flow Cytometry (Intracellular) - Anti-MAT2A + MAT1A antibody [EPR10496] (ab177484)

Intracellular Flow Cytometry analysis of HeLa (Human cervix adenocarcinoma epithelial cell) cells labeling MAT2A+MAT1A with Purified ab177484 at 1/30 dilution (10 µg/ml) (Red). Cells were fixed with 4% Paraformaldehyde and permeabilised with 90% Methanol. A Goat anti rabbit IgG (Alexa Fluor® 488, **ab150077**) secondary antibody was used at 1/2000. Isotype control - Rabbit monoclonal IgG (Black). Unlabeled control - Cell without incubation with primary antibody and secondary antibody (Blue).



Western blot - Anti-MAT2A + MAT1A antibody [EPR10496] (ab177484)

**All lanes** : Anti-MAT2A + MAT1A antibody [EPR10496] (ab177484) at 1/10000 dilution

**Lane 1** : Full-length Human MAT1A recombinant protein with His-Tag

**Lane 2** : Full-length Human MAT2A recombinant protein with GST-Tag

Lysates/proteins at 0.015 µg per lane.

**Secondary**

**All lanes** : Goat Anti-Rabbit IgG H&L (HRP) (**ab97051**) at 1/20000 dilution

**Predicted band size:** 44 kDa

MAT1A: Full-length recombinant protein (aa1-395) with His-Tag was made in-house

MAT2A: Full-length recombinant protein (aa1-364) with GST-Tag was from Abnova company

Blocking and diluting buffer and concentrations: 5%NFDM/TBST

**Exposure time:** Lane 1: 1 second

Lane 2: 3 seconds

### Why choose a recombinant antibody?



**Research with confidence**  
Consistent and reproducible results



**Long-term and scalable supply**  
Recombinant technology



**Success from the first experiment**  
Confirmed specificity



**Ethical standards compliant**  
Animal-free production

Anti-MAT2A + MAT1A antibody [EPR10496]  
(ab177484)

**Please note:** All products are "FOR RESEARCH USE ONLY. NOT FOR USE IN DIAGNOSTIC PROCEDURES"

### Our Abpromise to you: Quality guaranteed and expert technical support

---

- Replacement or refund for products not performing as stated on the datasheet
- Valid for 12 months from date of delivery
- Response to your inquiry within 24 hours
- We provide support in Chinese, English, French, German, Japanese and Spanish
- Extensive multi-media technical resources to help you
- We investigate all quality concerns to ensure our products perform to the highest standards

If the product does not perform as described on this datasheet, we will offer a refund or replacement. For full details of the Abpromise, please visit <https://www.abcam.com/abpromise> or contact our technical team.

### Terms and conditions

---

- Guarantee only valid for products bought direct from Abcam or one of our authorized distributors