

Product datasheet

Anti-Matrix protein 1 antibody ab20910

★★★★★ [2 Abreviews](#) [16 References](#) [1 Image](#)

Overview

Product name	Anti-Matrix protein 1 antibody
Description	Goat polyclonal to Matrix protein 1
Host species	Goat
Tested applications	Suitable for: ICC/IF, ELISA Unsuitable for: IHC
Species reactivity	Reacts with: Influenza A
Immunogen	Full length native protein (purified) corresponding to Matrix protein 1. Purified M1 protein, Influenza A-Phillipines (H3N2).
General notes	<p>The Life Science industry has been in the grips of a reproducibility crisis for a number of years. Abcam is leading the way in addressing this with our range of recombinant monoclonal antibodies and knockout edited cell lines for gold-standard validation. Please check that this product meets your needs before purchasing.</p> <p>If you have any questions, special requirements or concerns, please send us an inquiry and/or contact our Support team ahead of purchase. Recommended alternatives for this product can be found below, along with publications, customer reviews and Q&As</p>

Properties

Form	Liquid
Storage instructions	Shipped at 4°C. Upon delivery aliquot and store at -20°C. Avoid freeze / thaw cycles.
Storage buffer	Preservative: 0.1% Sodium azide Constituent: 0.0268% PBS
Purity	Ion Exchange Chromatography
Purification notes	>95% pure. Sodium sulfate precipitation and ion-exchange chromatography.
Clonality	Polyclonal
Isotype	IgG

Applications

The Abpromise guarantee Our **Abpromise guarantee** covers the use of ab20910 in the following tested applications.

The application notes include recommended starting dilutions; optimal dilutions/concentrations should be determined by the end user.

Application	Abreviews	Notes
ICC/IF	★★★★★ (1)	Use at an assay dependent concentration.
ELISA		Use at an assay dependent concentration.

Application notes Is unsuitable for IHC.

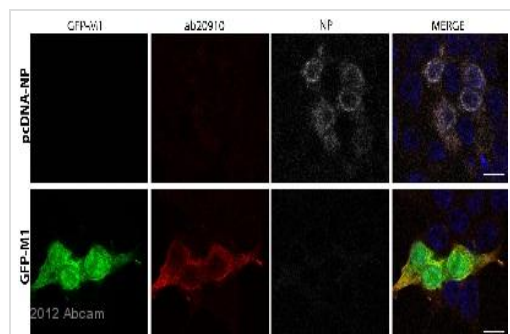
Target

Relevance

Influenza virus type A matrix protein, also known as M1, is composed of a 252 amino acid sequence and is type-specific in influenza viruses. It is located inside the viral lipid envelope and plays a key role in virus assembly and replication. M1 can be isolated from particles by removing the envelope with detergents and reducing the pH to 4.0. Influenza viruses are a common and widely spread infectious agent. Like many other viruses, influenza virus are constantly undergoing mutations and thereby avoiding the immune system. The Influenza A Virus M proteins form a continuous shell on the inner side of the lipid bilayer, maintaining the structural integrity of the virus particle through hydrophobic interactions.

Cellular localization Cytoplasmic

Images



Immunocytochemistry/ Immunofluorescence - Anti-Matrix protein 1 antibody (ab20910)

This image is courtesy of an abreview submitted by Maria Amorim.

Immunocytochemical immunofluorescence analysis of Formaldehyde-fixed human kidney epithelial cells, labelling Influenza A Virus M1 matrix protein with ab20910 at a dilution of 1/500 incubated for 1 hour at 18°C in 1% FCS PBS. Blocking was with 1% serum incubated for 30 minutes at 18°C. Secondary was a donkey anti-goat Alexa Fluor® 568 undiluted. Cells were transfected with either GFP-M1 or pCDNA2-NP, as indicated on the left hand side of the figure. 24h later cells were fixed and stained for M1 using ab20910 (red) or NP using [ab20343](#) (grey). The abcam 20910 detected M1 in cells transfected with GFP-M1 but not pCDNA3-NP. Moreover, the level of co-localization between GFP-M1 and ab20910 was quite good.

Please note: All products are "FOR RESEARCH USE ONLY. NOT FOR USE IN DIAGNOSTIC PROCEDURES"

Our Promise to you: Quality guaranteed and expert technical support

- Replacement or refund for products not performing as stated on the datasheet
- Valid for 12 months from date of delivery
- Response to your inquiry within 24 hours

- We provide support in Chinese, English, French, German, Japanese and Spanish
- Extensive multi-media technical resources to help you
- We investigate all quality concerns to ensure our products perform to the highest standards

If the product does not perform as described on this datasheet, we will offer a refund or replacement. For full details of the Abpromise, please visit <https://www.abcam.com/abpromise> or contact our technical team.

Terms and conditions

- Guarantee only valid for products bought direct from Abcam or one of our authorized distributors