




Product datasheet

Anti-MBD4/MED1 antibody - C-terminal ab191037

3 Images

Overview

Product name	Anti-MBD4/MED1 antibody - C-terminal
Description	Rabbit polyclonal to MBD4/MED1 - C-terminal
Host species	Rabbit
Tested applications	Suitable for: WB
Species reactivity	Reacts with: Rat, Human Predicted to work with: Mouse 
Immunogen	Synthetic peptide corresponding to Human MBD4/MED1 aa 550 to the C-terminus (C terminal). Database link: O95243  Run BLAST with  Run BLAST with
Positive control	Rat brain and kidney tissue lysates; A549, HeLa and MCF-7 cell lysates; Recombinant Human MBD4/MED1 protein (aa400-580).
General notes	<p>The Life Science industry has been in the grips of a reproducibility crisis for a number of years. Abcam is leading the way in addressing this with our range of recombinant monoclonal antibodies and knockout edited cell lines for gold-standard validation. Please check that this product meets your needs before purchasing.</p> <p>If you have any questions, special requirements or concerns, please send us an inquiry and/or contact our Support team ahead of purchase. Recommended alternatives for this product can be found below, along with publications, customer reviews and Q&As</p>

Properties

Form	Liquid
Storage instructions	Shipped at 4°C. Store at +4°C short term (1-2 weeks). Upon delivery aliquot. Store at -20°C long term. Avoid freeze / thaw cycle.
Storage buffer	Preservatives: 0.025% Thimerosal (merthiolate), 0.025% Sodium azide Constituents: 2.5% BSA, 0.45% Sodium chloride, 0.1% Dibasic monohydrogen sodium phosphate
Purity	Immunogen affinity purified
Clonality	Polyclonal
Isotype	IgG

Applications

The Abpromise guarantee

Our **Abpromise guarantee** covers the use of ab191037 in the following tested applications.

The application notes include recommended starting dilutions; optimal dilutions/concentrations should be determined by the end user.

Application	Abreviews	Notes
WB		Use a concentration of 0.1 - 0.5 µg/ml. Predicted molecular weight: 66 kDa. The detection limit for MBD4 is approximately 1ng/lane under reducing conditions.

Target

Function

Mismatch-specific DNA N-glycosylase involved in DNA repair. Has thymine glycosylase activity and is specific for G:T mismatches within methylated and unmethylated CpG sites. Can also remove uracil or 5-fluorouracil in G:U mismatches. Has no lyase activity. Was first identified as methyl-CpG-binding protein.

Sequence similarities

Contains 1 MBD (methyl-CpG-binding) domain.

Cellular localization

Nucleus.

Images



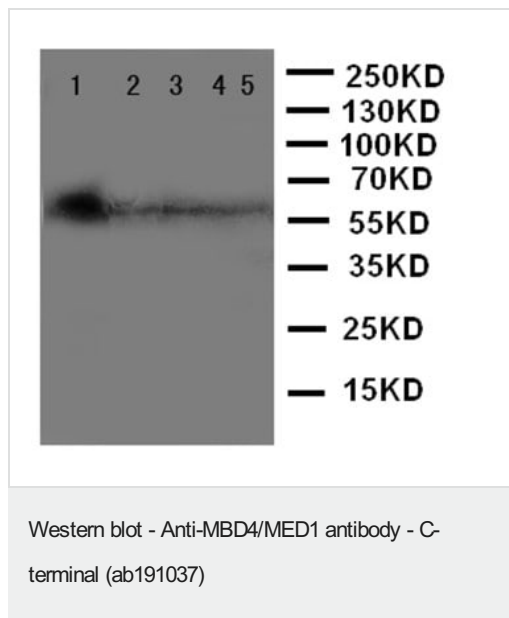
All lanes : Anti-MBD4/MED1 antibody - C-terminal (ab191037) at 0.5 µg/ml

Lane 1 : Rat brain tissue lysate

Lane 2 : MCF-7 cell lysate

Lane 3 : HeLa cell lysate

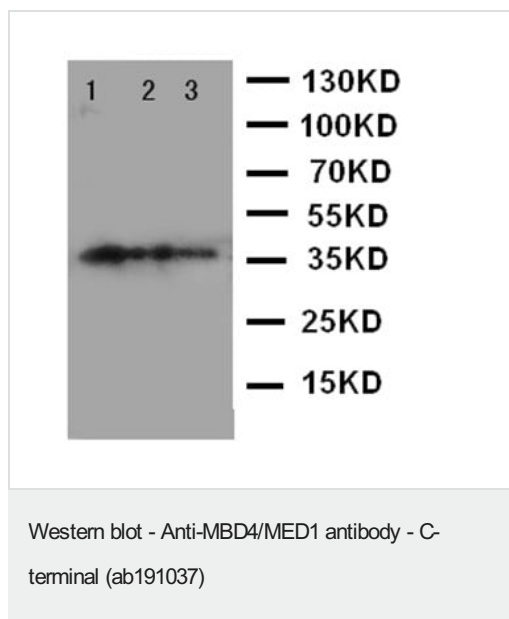
Predicted band size: 66 kDa



All lanes : Anti-MBD4/MED1 antibody - C-terminal (ab191037) at 0.5 µg/ml

Lane 1 : Rat brain tissue lysate
Lane 2 : Rat kidney tissue lysate
Lane 3 : A549 cell lysate
Lane 4 : HeLa cell lysate
Lane 5 : MCF-7 cell lysate

Predicted band size: 66 kDa



All lanes : Anti-MBD4/MED1 antibody - C-terminal (ab191037) at 0.5 µg/ml

Lane 1 : Recombinant Human MBD4/MED1 protein (aa400-580) at 0.01 µg
Lane 2 : Recombinant Human MBD4/MED1 protein (aa400-580) at 0.005 µg
Lane 3 : Recombinant Human MBD4/MED1 protein (aa400-580) at 0.0025 µg

Predicted band size: 66 kDa

E.coli derived -recombinant Human MBD4/MED1, 39.7 kDa (162aa tag + Q400-S580).

Please note: All products are "FOR RESEARCH USE ONLY. NOT FOR USE IN DIAGNOSTIC PROCEDURES"

Our Abpromise to you: Quality guaranteed and expert technical support

- Replacement or refund for products not performing as stated on the datasheet

- Valid for 12 months from date of delivery
- Response to your inquiry within 24 hours
- We provide support in Chinese, English, French, German, Japanese and Spanish
- Extensive multi-media technical resources to help you
- We investigate all quality concerns to ensure our products perform to the highest standards

If the product does not perform as described on this datasheet, we will offer a refund or replacement. For full details of the Abpromise, please visit <https://www.abcam.com/abpromise> or contact our technical team.

Terms and conditions

- Guarantee only valid for products bought direct from Abcam or one of our authorized distributors