

Anti-mCherry antibody ab183628

★★★★★ [6 Abreviews](#) [68 References](#) [7 Images](#)

Overview

Product name	Anti-mCherry antibody
Description	Rabbit polyclonal to mCherry
Host species	Rabbit
Tested applications	Suitable for: ICC/IF, IHC - Wholemount, IP, WB
Species reactivity	Reacts with: Species independent
Immunogen	Recombinant full length protein corresponding to mCherry.
Positive control	IHC-Wm: 2 days-post-fertilization zebrafish embryos . WB: Full length recombinant mCherry. mCherry-tagged protein expressing HEK-293T cell lysate. ICC/IF: mCherry fusion protein-transfected HeLa cells IP: HEK-293T
General notes	<p>The Life Science industry has been in the grips of a reproducibility crisis for a number of years. Abcam is leading the way in addressing this with our range of recombinant monoclonal antibodies and knockout edited cell lines for gold-standard validation. Please check that this product meets your needs before purchasing.</p> <p>If you have any questions, special requirements or concerns, please send us an inquiry and/or contact our Support team ahead of purchase. Recommended alternatives for this product can be found below, along with publications, customer reviews and Q&As</p>

Properties

Form	Liquid
Storage instructions	Shipped at 4°C. Store at +4°C short term (1-2 weeks). Upon delivery aliquot. Store at -20°C long term. Avoid freeze / thaw cycle.
Storage buffer	<p>pH: 7.00</p> <p>Preservative: 0.025% Proclin 300</p> <p>Constituents: 78% PBS, 1% BSA, 20% Glycerol (glycerin, glycerine)</p>
Purity	Immunogen affinity purified
Clonality	Polyclonal
Isotype	IgG

Applications

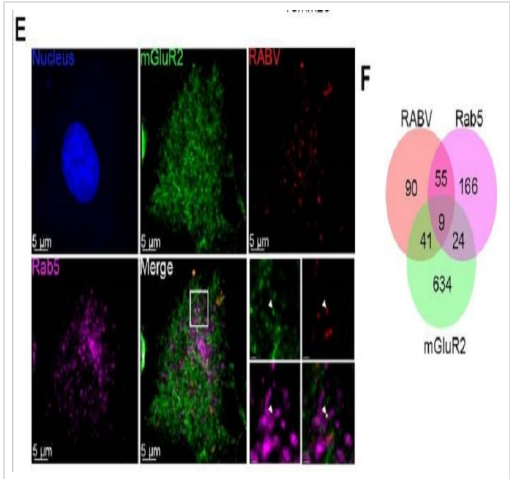
The Abpromise guarantee Our **Abpromise guarantee** covers the use of ab183628 in the following tested applications. The application notes include recommended starting dilutions; optimal dilutions/concentrations should be determined by the end user.

Application	Abreviews	Notes
ICC/IF	★★★★★ (1)	1/100 - 1/1000.
IHC - Wholemount		1/100 - 1/500.
IP	★★★★★ (2)	1/100 - 1/500.
WB	★★★★★ (2)	1/1000 - 1/10000. Predicted molecular weight: 27 kDa.

Target

Relevance mCherry is derived from proteins originally isolated from *Cnidarians* (jelly fish, sea anemones and corals), and is used as a fluorescent tracer in trasfection and transgenic experiments. The prototype for these fluorescent proteins is Green Fluorescent Protein (GFP), which is a ~27kDa protein isolated originally from the jellyfish *Aequoria victoria*. The mCherry protein is derived from DsRed, a red fluorescent protein related to GFP isolated from so-called disc corals of the genus *Discosoma*.

Images

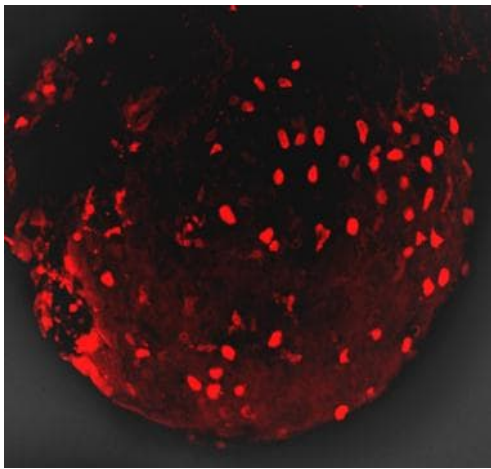


RABV and mGluR2 are internalized into cells and transported together in early and late endosomes.

N2a (Mouse neuroblastoma cells) cells were stained by using the Tyramide Signal Amplification immunofluorescent method. N2a cells infected with ERA-N-mCherry for 20 minutes at 37°C were used to perform immunofluorescence staining for RABV antigen (red), mGluR2 (green), Rab5 or Rab7 (purple), and the cell nuclei (blue). Co-localization of the RABV-mGluR2 complex with Rab5 (E, F).

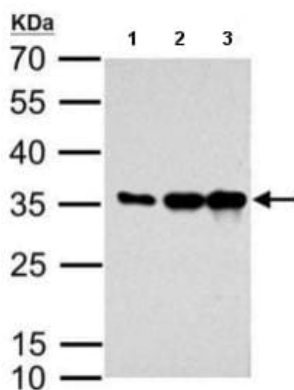
Immunocytochemistry/ Immunofluorescence - Anti-mCherry antibody (ab183628)

Wang et al PLoS Pathog. 2018 Jul 20;14(7):e1007189. doi: 10.1371/journal.ppat.1007189. eCollection 2018 Jul. Fig 7. Reproduced under the Creative Commons license <http://creativecommons.org/licenses/by/4.0/>



IHC - Wholmount - Anti-mCherry antibody
(ab183628)

Whole mount immunohistochemical analysis of 2 days-post-fertilization zebrafish embryos labeling mCherry-expressing cells with ab183628 at 1/100 dilution.



Western blot - Anti-mCherry antibody (ab183628)

All lanes : Anti-mCherry antibody (ab183628) at 1/2000 dilution

Lane 1 : Full length recombinant mCherry at 0.005 μ g

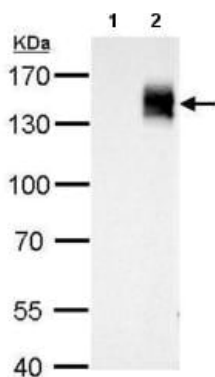
Lane 2 : Full length recombinant mCherry at 0.01 μ g

Lane 3 : Full length recombinant mCherry at 0.02 μ g

Secondary

All lanes : HRP-conjugated anti-rabbit IgG

Predicted band size: 27 kDa



Western blot - Anti-mCherry antibody (ab183628)

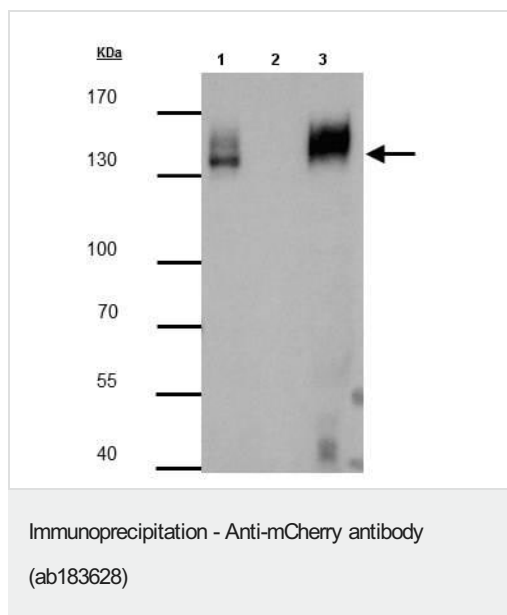
All lanes : Anti-mCherry antibody (ab183628) at 1/5000 dilution

Lane 1 : HEK-293T (Human epithelial cell line from embryonic kidney transformed with large T antigen) whole cell lysate/extract

Lane 2 : Whole cell lysate/extract of mCherry-tagged protein expressing HEK-293T cells

Lysates/proteins at 30 μ g per lane.

Predicted band size: 27 kDa



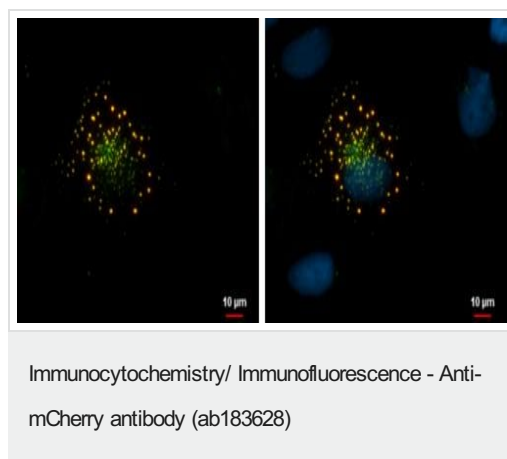
Immunoprecipitation analysis of HEK-293T (Human epithelial cell line from embryonic kidney transformed with large T antigen) whole cell lysate/extract using ab183628 at a 1/3000 dilution.

Lane 1: 20 µg whole cell lysate/extract of Cherry protein-expressing HEK-293T cells.

Lane 2: Control with 2.5 µg of pre-immune rabbit IgG.

Lane 3: Immunoprecipitation of mCherry protein with 2.5 µg of ab183628.

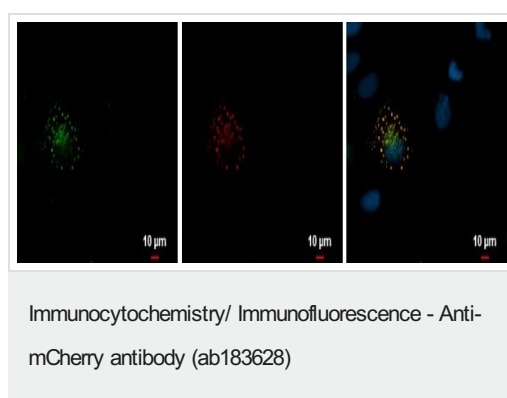
7.5% SDS-PAGE. An anti-rabbit IgG (HRP) was used as a secondary reagent.



Immunofluorescent analysis of mCherry fusion protein-transfected HeLa (Human epithelial cell line from cervix adenocarcinoma) cells. Cells were fixed with 4% paraformaldehyde for 30 minutes at room temperature and then permeabilized with 0.1% Triton X-100 for 1 minute. mCherry (green) was labeled using ab183628 at a dilution of 1/500.

Red: mCherry fusion protein is expressed in the transfected cell.

Blue: Hoechst 33342 staining.



Immunofluorescent analysis of mCherry fusion protein-transfected HeLa (Human epithelial cell line from cervix adenocarcinoma) cells. Cells were fixed with 4% paraformaldehyde for 30 minutes at room temperature and then permeabilized with 0.1% Triton X-100 for 1 minute. mCherry (green) was labeled using ab183628 at a dilution of 1/500.

Red: mCherry fusion protein is expressed in the transfected cell.

Blue: Hoechst 33342 staining.

Please note: All products are "FOR RESEARCH USE ONLY. NOT FOR USE IN DIAGNOSTIC PROCEDURES"

Our Abpromise to you: Quality guaranteed and expert technical support

- Replacement or refund for products not performing as stated on the datasheet
- Valid for 12 months from date of delivery
- Response to your inquiry within 24 hours

- We provide support in Chinese, English, French, German, Japanese and Spanish
- Extensive multi-media technical resources to help you
- We investigate all quality concerns to ensure our products perform to the highest standards

If the product does not perform as described on this datasheet, we will offer a refund or replacement. For full details of the Abpromise, please visit <https://www.abcam.com/abpromise> or contact our technical team.

Terms and conditions

- Guarantee only valid for products bought direct from Abcam or one of our authorized distributors