


Product datasheet

Anti-MCM2 antibody ab3723

★★★★★ [1 Abreviews](#) [2 Images](#)

Overview

Product name	Anti-MCM2 antibody
Description	Goat polyclonal to MCM2
Host species	Goat
Tested applications	Suitable for: WB
Species reactivity	Reacts with: Mouse, Human Predicted to work with: Chimpanzee, Gorilla, Orangutan 
Immunogen	Synthetic peptide corresponding to Human MCM2 aa 1-50. Database link: NP_0045117.2
Positive control	HeLa cell lysate.
General notes	<p>The Life Science industry has been in the grips of a reproducibility crisis for a number of years. Abcam is leading the way in addressing this with our range of recombinant monoclonal antibodies and knockout edited cell lines for gold-standard validation. Please check that this product meets your needs before purchasing.</p> <p>If you have any questions, special requirements or concerns, please send us an inquiry and/or contact our Support team ahead of purchase. Recommended alternatives for this product can be found below, along with publications, customer reviews and Q&As</p>

Properties

Form	Liquid
Storage instructions	Shipped at 4°C. Upon delivery aliquot and store at -20°C. Avoid freeze / thaw cycles.
Storage buffer	pH: 7.00 Preservative: 0.09% Sodium azide Constituents: 0.021% PBS, 1.764% Sodium citrate, 1.815% Tris
Purity	Immunogen affinity purified
Clonality	Polyclonal
Isotype	IgG

Applications

The Abpromise guarantee

Our **Abpromise guarantee** covers the use of ab3723 in the following tested applications.

The application notes include recommended starting dilutions; optimal dilutions/concentrations should be determined by the end user.

Application	Abreviews	Notes
WB		1/2000 - 1/10000. Detects a band of approximately 130 kDa (predicted molecular weight: 120 kDa).

Target

Function

Acts as component of the MCM2-7 complex (MCM complex) which is the putative replicative helicase essential for 'once per cell cycle' DNA replication initiation and elongation in eukaryotic cells. The active ATPase sites in the MCM2-7 ring are formed through the interaction surfaces of two neighboring subunits such that a critical structure of a conserved arginine finger motif is provided in trans relative to the ATP-binding site of the Walker A box of the adjacent subunit. The six ATPase active sites, however, are likely to contribute differentially to the complex helicase activity. Required for the entry in S phase and for cell division.

Sequence similarities

Belongs to the MCM family.
Contains 1 MCM domain.

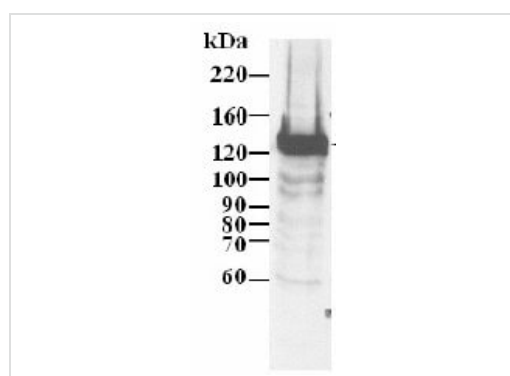
Post-translational modifications

Phosphorylated on Ser-108 by ATR in proliferating cells. Ser-108 proliferation is increased by genotoxic agents. Ser-40 is mediated by the CDC7-DBF4 and CDC7-DBF4B complexes, while Ser-53 phosphorylation is only mediated by the CDC7-DBF4 complex. Phosphorylation by the CDC7-DBF4 complex during G1/S phase is required for the initiation of DNA replication.

Cellular localization

Nucleus.

Images



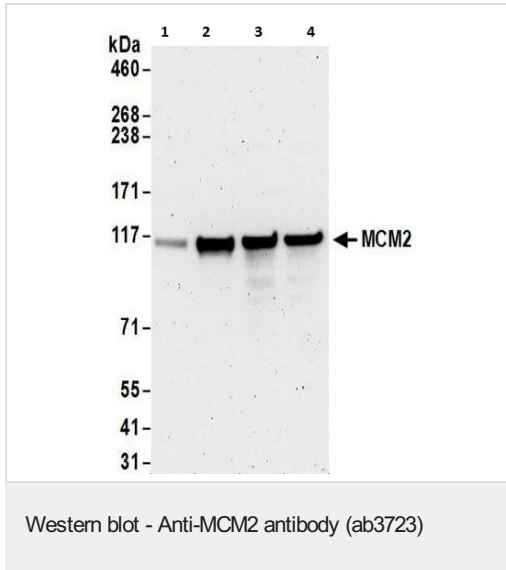
Western blot - Anti-MCM2 antibody (ab3723)

Sample: HeLa cell RIPA extract (60µg).

Antibody: Affinity purified Goat anti-MCM 2 (ab3723) diluted 1 / 4000.

Detection: ECL.

Sample: HeLa cell RIPA extract (60µg). Antibody: Affinity purified Goat anti-MCM 2 (ab3723) diluted 1 / 4000. Detection: ECL.



All lanes : Anti-MCM2 antibody (ab3723) at 0.5 µg/ml

Lane 1 : NIH3T3 cells

Lane 2 : TCMK-1 cells

Lane 3 : 4T1 cells

Lane 4 : CT26.WT cells

Lysates/proteins at 50 µg per lane.

Predicted band size: 120 kDa

Detection: Chemiluminescence with an exposed time of 3 minutes.

Please note: All products are "FOR RESEARCH USE ONLY. NOT FOR USE IN DIAGNOSTIC PROCEDURES"

Our Abpromise to you: Quality guaranteed and expert technical support

- Replacement or refund for products not performing as stated on the datasheet
- Valid for 12 months from date of delivery
- Response to your inquiry within 24 hours
- We provide support in Chinese, English, French, German, Japanese and Spanish
- Extensive multi-media technical resources to help you
- We investigate all quality concerns to ensure our products perform to the highest standards

If the product does not perform as described on this datasheet, we will offer a refund or replacement. For full details of the Abpromise, please visit <https://www.abcam.com/abpromise> or contact our technical team.

Terms and conditions

- Guarantee only valid for products bought direct from Abcam or one of our authorized distributors