

## Product datasheet

# Anti-MCM3 antibody [EPR7080] ab128923

Recombinant RabMAb

[6 References](#) [10 Images](#)

### Overview

<b>Product name</b>	Anti-MCM3 antibody [EPR7080]
<b>Description</b>	Rabbit monoclonal [EPR7080] to MCM3
<b>Host species</b>	Rabbit
<b>Tested applications</b>	<b>Suitable for:</b> WB, IHC-P, Flow Cyt (Intra) <b>Unsuitable for:</b> IP
<b>Species reactivity</b>	<b>Reacts with:</b> Mouse, Rat, Human
<b>Immunogen</b>	Synthetic peptide. This information is proprietary to Abcam and/or its suppliers.
<b>Positive control</b>	L6, C6, RAW 264.7, PC-12, NIH/3T3, HeLa, K562, HepG2, U937 and 293T cell lysates. Human colon and tonsil tissue.
<b>General notes</b>	<p>This product is a recombinant monoclonal antibody, which offers several advantages including:</p> <ul style="list-style-type: none"><li>- High batch-to-batch consistency and reproducibility</li><li>- Improved sensitivity and specificity</li><li>- Long-term security of supply</li><li>- Animal-free production</li></ul> <p>For more information <a href="#">see here</a>.</p> <p>Our RabMAb<sup>®</sup> technology is a patented hybridoma-based technology for making rabbit monoclonal antibodies. For details on our patents, please refer to <a href="#">RabMAb<sup>®</sup> patents</a>.</p>

### Properties

<b>Form</b>	Liquid
<b>Storage instructions</b>	Shipped at 4°C. Upon delivery aliquot and store at -20°C. Avoid repeated freeze / thaw cycles.
<b>Storage buffer</b>	pH: 7.20 Preservative: 0.01% Sodium azide Constituents: 9% PBS, 40% Glycerol (glycerin, glycerine), 0.05% BSA, 50% Tissue culture supernatant
<b>Purity</b>	Protein A purified
<b>Clonality</b>	Monoclonal
<b>Clone number</b>	EPR7080

Isotype

IgG

## Applications

---

### The Abpromise guarantee

Our **Abpromise guarantee** covers the use of ab128923 in the following tested applications.

The application notes include recommended starting dilutions; optimal dilutions/concentrations should be determined by the end user.

Application	Abreviews	Notes
WB		1/1000 - 1/10000. Detects a band of approximately 100 kDa (predicted molecular weight: 91 kDa).
IHC-P		1/100 - 1/250. Perform heat mediated antigen retrieval before commencing with IHC staining protocol.
Flow Cyt (Intra)		Use at an assay dependent concentration.

### Application notes

Is unsuitable for IP.

## Target

---

### Function

Acts as component of the MCM2-7 complex (MCM complex) which is the putative replicative helicase essential for 'once per cell cycle' DNA replication initiation and elongation in eukaryotic cells. The active ATPase sites in the MCM2-7 ring are formed through the interaction surfaces of two neighboring subunits such that a critical structure of a conserved arginine finger motif is provided in trans relative to the ATP-binding site of the Walker A box of the adjacent subunit. The six ATPase active sites, however, are likely to contribute differentially to the complex helicase activity. Required for DNA replication and cell proliferation.

### Sequence similarities

Belongs to the MCM family.  
Contains 1 MCM domain.

### Post-translational modifications

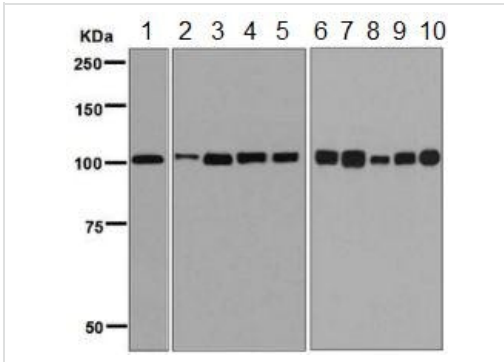
Phosphorylated upon DNA damage, probably by ATM or ATR.

### Cellular localization

Nucleus.

## Images

---



Western blot - Anti-MCM3 antibody [EPR7080] (ab128923)

**All lanes :** Anti-MCM3 antibody [EPR7080] (ab128923) at 1/1000 dilution

**Lane 1 :** L6 cell lysate

**Lane 2 :** C6 cell lysate

**Lane 3 :** RAW 264.7 cell lysate

**Lane 4 :** PC-12 cell lysate

**Lane 5 :** NIH/3T3 cell lysate

**Lane 6 :** HeLa cell lysate

**Lane 7 :** K562 cell lysate

**Lane 8 :** HepG2 cell lysate

**Lane 9 :** U937 cell lysate

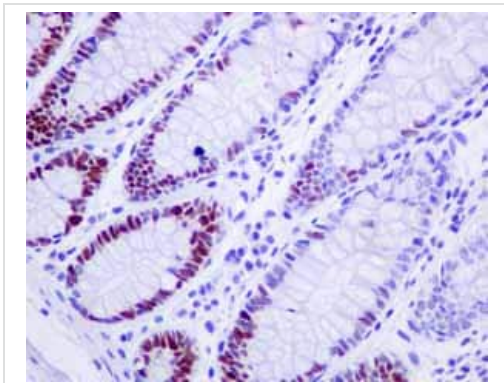
**Lane 10 :** 293T cell lysate

Lysates/proteins at 10 µg per lane.

### Secondary

**All lanes :** Goat anti-rabbit HRP at 1/2000 dilution

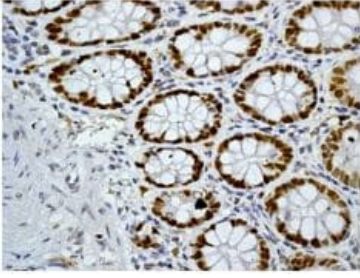
**Predicted band size:** 91 kDa



Immunohistochemistry (Formalin/PFA-fixed paraffin-embedded sections) - Anti-MCM3 antibody [EPR7080] (ab128923)

ab128923 showing positive staining in Normal colon tissue.

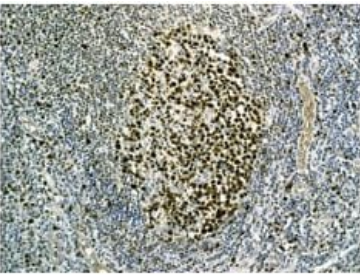
Perform heat mediated antigen retrieval before commencing with IHC staining protocol.



Immunohistochemistry (Formalin/PFA-fixed paraffin-embedded sections) - Anti-MCM3 antibody [EPR7080] (ab128923)

ab128923 at 1/100 dilution staining MCM3 in paraffin-embedded Human colon tissue by immunohistochemistry.

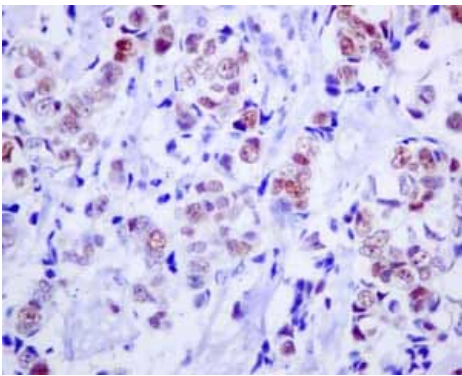
Perform heat mediated antigen retrieval before commencing with IHC staining protocol.



Immunohistochemistry (Formalin/PFA-fixed paraffin-embedded sections) - Anti-MCM3 antibody [EPR7080] (ab128923)

ab128923 at 1/100 dilution staining MCM3 in paraffin-embedded Human tonsil tissue by immunohistochemistry.

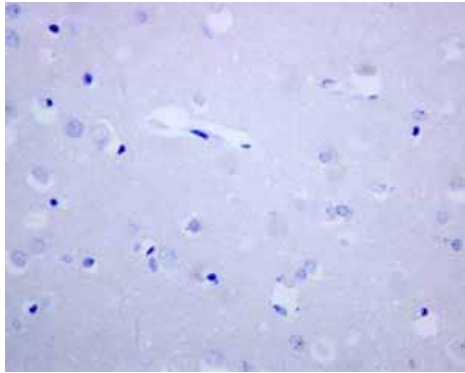
Perform heat mediated antigen retrieval before commencing with IHC staining protocol.



Immunohistochemistry (Formalin/PFA-fixed paraffin-embedded sections) - Anti-MCM3 antibody [EPR7080] (ab128923)

ab128923 showing positive staining in Breast carcinoma tissue.

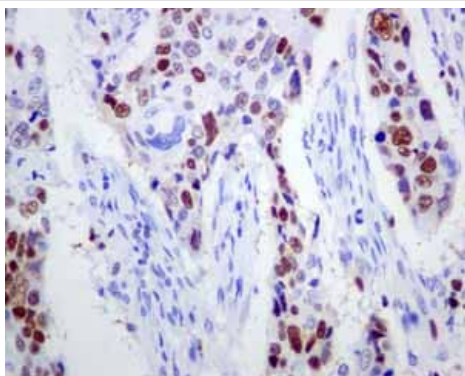
Perform heat mediated antigen retrieval before commencing with IHC staining protocol.



ab128923 showing negative staining in Normal brain tissue.

Perform heat mediated antigen retrieval before commencing with IHC staining protocol.

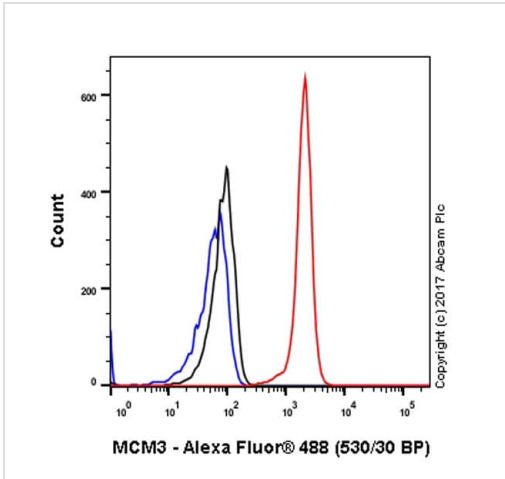
Immunohistochemistry (Formalin/PFA-fixed paraffin-embedded sections) - Anti-MCM3 antibody [EPR7080] (ab128923)



ab128923 showing positive staining in Lung carcinoma tissue.

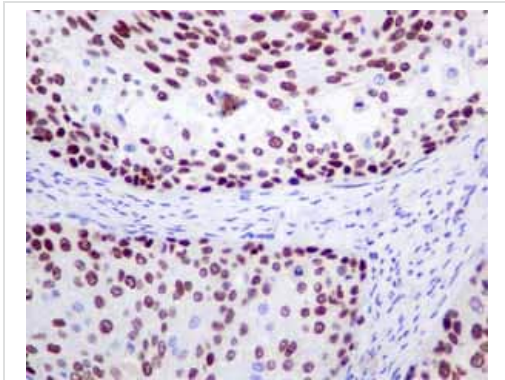
Perform heat mediated antigen retrieval before commencing with IHC staining protocol.

Immunohistochemistry (Formalin/PFA-fixed paraffin-embedded sections) - Anti-MCM3 antibody [EPR7080] (ab128923)



Flow Cytometry (Intracellular) - Anti-MCM3 antibody  
[EPR7080] (ab128923)

Intracellular Flow Cytometry analysis of K562 (human chronic myelogenous leukemia) cells labeling MCM3 with unpurified ab128923 at 1/900 dilution (1 ug/ml) (red). Cells were fixed with 4% paraformaldehyde and permeabilised with 90% methanol. A Goat anti rabbit IgG (Alexa Fluor® 488) (1/2000 dilution) was used as the secondary antibody. Rabbit monoclonal IgG (Black) was used as the isotype control, cells without incubation with primary antibody and secondary antibody (Blue) were used as the unlabeled control.



Immunohistochemistry (Formalin/PFA-fixed paraffin-embedded sections) - Anti-MCM3 antibody  
[EPR7080] (ab128923)

ab128923 showing positive staining in Cervical carcinoma tissue.

Perform heat mediated antigen retrieval before commencing with IHC staining protocol.

### Why choose a recombinant antibody?



**Research with confidence**  
Consistent and reproducible results



**Long-term and scalable supply**  
Recombinant technology



**Success from the first experiment**  
Confirmed specificity



**Ethical standards compliant**  
Animal-free production

Anti-MCM3 antibody [EPR7080] (ab128923)

**Please note:** All products are "FOR RESEARCH USE ONLY. NOT FOR USE IN DIAGNOSTIC PROCEDURES"

### Our Abpromise to you: Quality guaranteed and expert technical support

---

- Replacement or refund for products not performing as stated on the datasheet
- Valid for 12 months from date of delivery
- Response to your inquiry within 24 hours
- We provide support in Chinese, English, French, German, Japanese and Spanish
- Extensive multi-media technical resources to help you
- We investigate all quality concerns to ensure our products perform to the highest standards

If the product does not perform as described on this datasheet, we will offer a refund or replacement. For full details of the Abpromise, please visit <https://www.abcam.com/abpromise> or contact our technical team.

### Terms and conditions

---

- Guarantee only valid for products bought direct from Abcam or one of our authorized distributors