


Product datasheet

Anti-MCM4 antibody [EPR5245] ab124836

Recombinant RabMAb

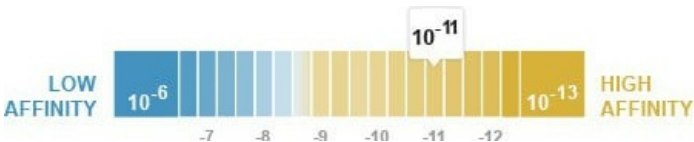
2 References 4 Images

Overview

Product name	Anti-MCM4 antibody [EPR5245]
Description	Rabbit monoclonal [EPR5245] to MCM4
Host species	Rabbit
Tested applications	Suitable for: Flow Cyt (Intra), WB Unsuitable for: ICC/IF or IHC-P
Species reactivity	Reacts with: Human Predicted to work with: Mouse 
Immunogen	Synthetic peptide within Human MCM4 aa 800-900 (C terminal). The exact sequence is proprietary.
Positive control	HeLa, Molt-4, and A431 cell lysates and Molt-4 cells.
General notes	<p>This product is a recombinant monoclonal antibody, which offers several advantages including:</p> <ul style="list-style-type: none">- High batch-to-batch consistency and reproducibility- Improved sensitivity and specificity- Long-term security of supply- Animal-free production <p>For more information see here.</p> <p>Our RabMAb[®] technology is a patented hybridoma-based technology for making rabbit monoclonal antibodies. For details on our patents, please refer to RabMAb[®] patents.</p> <p>Rat: We have preliminary internal testing data to indicate this antibody may not react with this species. Please contact us for more information.</p>

Properties

Form	Liquid
Storage instructions	Shipped at 4°C. Store at -20°C. Stable for 12 months at -20°C.
Dissociation constant (K _D)	K _D = 1.80 x 10 ⁻¹¹ M



[Learn more about K_D](#)

Storage buffer	pH: 7.20 Preservative: 0.05% Sodium azide Constituents: 40% Glycerol (glycerin, glycerine), 9.85% Tris glycine, 50% Tissue culture supernatant
Purity	Protein A purified
Clonality	Monoclonal
Clone number	EPR5245
Isotype	IgG

Applications

The Abpromise guarantee Our **[Abpromise guarantee](#)** covers the use of ab124836 in the following tested applications. The application notes include recommended starting dilutions; optimal dilutions/concentrations should be determined by the end user.

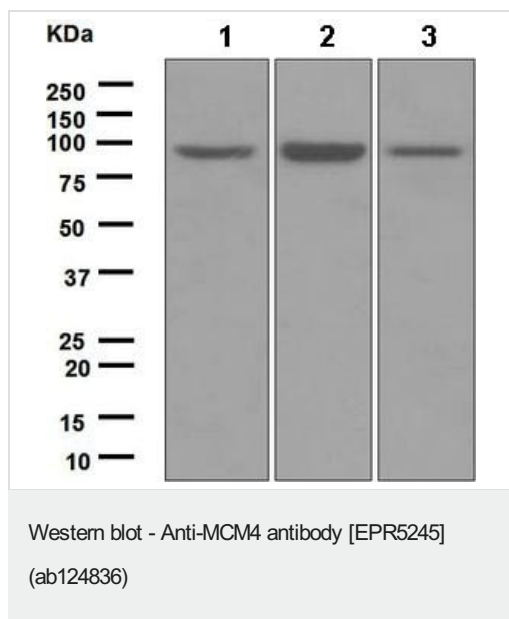
Application	Abreviews	Notes
Flow Cyt (Intra)		1/100 - 1/500. ab172730 - Rabbit monoclonal IgG, is suitable for use as an isotype control with this antibody.
WB		1/50000 - 1/200000. Predicted molecular weight: 97 kDa.

Application notes Is unsuitable for ICC/IF or IHC-P.

Target

Function	Acts as component of the MCM2-7 complex (MCM complex) which is the putative replicative helicase essential for 'once per cell cycle' DNA replication initiation and elongation in eukaryotic cells. The active ATPase sites in the MCM2-7 ring are formed through the interaction surfaces of two neighboring subunits such that a critical structure of a conserved arginine finger motif is provided in trans relative to the ATP-binding site of the Walker A box of the adjacent subunit. The six ATPase active sites, however, are likely to contribute differentially to the complex helicase activity.
Sequence similarities	Belongs to the MCM family. Contains 1 MCM domain.
Cellular localization	Nucleus.

Images



All lanes : Anti-MCM4 antibody [EPR5245] (ab124836) at 1/50000 dilution

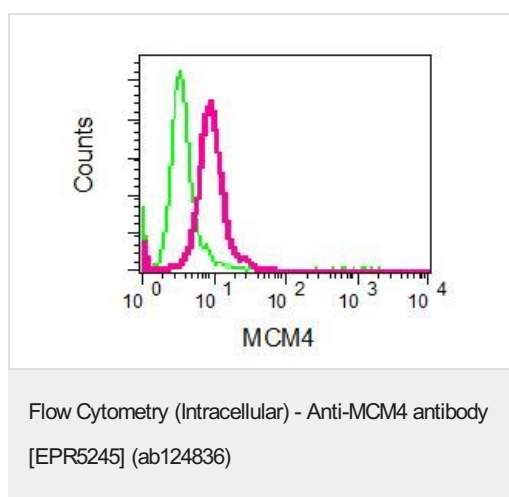
Lane 1 : HeLa cell lysate

Lane 2 : Molt-4 cell lysate

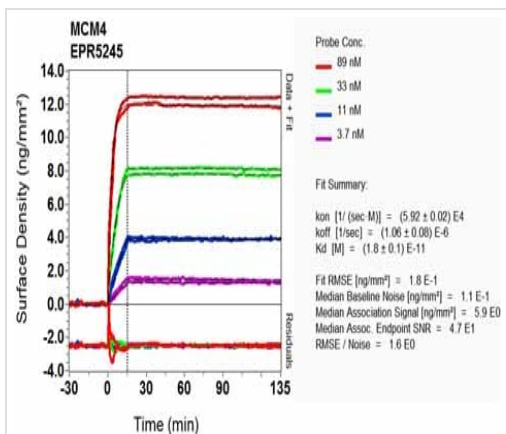
Lane 3 : A431 cell lysate

Lysates/proteins at 10 µg per lane.

Predicted band size: 97 kDa



Intracellular flow cytometric analysis of permeabilized Molt-4 cells using anti-MCM4 in red (ab124836) or a rabbit IgG in green (negative).



SPR Scanning - Anti-MCM4 antibody [EPR5245]
(ab124836)

Equilibrium dissociation constant (K_D)

Learn more about K_D

[Click here to learn more about \$K_D\$](#)

Why choose a
recombinant antibody?



**Research with
confidence**
Consistent and
reproducible results



**Long-term and
scalable supply**
Recombinant
technology



**Success from the
first experiment**
Confirmed
specificity



**Ethical standards
compliant**
Animal-free
production

Anti-MCM4 antibody [EPR5245] (ab124836)

Please note: All products are "FOR RESEARCH USE ONLY. NOT FOR USE IN DIAGNOSTIC PROCEDURES"

Our Abpromise to you: Quality guaranteed and expert technical support

- Replacement or refund for products not performing as stated on the datasheet
- Valid for 12 months from date of delivery
- Response to your inquiry within 24 hours
- We provide support in Chinese, English, French, German, Japanese and Spanish
- Extensive multi-media technical resources to help you
- We investigate all quality concerns to ensure our products perform to the highest standards

If the product does not perform as described on this datasheet, we will offer a refund or replacement. For full details of the Abpromise, please visit <https://www.abcam.com/abpromise> or contact our technical team.

Terms and conditions

- Guarantee only valid for products bought direct from Abcam or one of our authorized distributors