




Product datasheet

Anti-MCM7/PRL antibody - BSA and Azide free ab179904

★★★★★ 1 Abreviews 4 References 4 Images

Overview

Product name	Anti-MCM7/PRL antibody - BSA and Azide free
Description	Rabbit polyclonal to MCM7/PRL
Host species	Rabbit
Tested applications	Suitable for: WB, ICC/IF, IP
Species reactivity	Reacts with: Mouse, Human Predicted to work with: Cow 
Immunogen	Recombinant fragment (His-tag) corresponding to Human MCM7/PRL aa 562-719 (C terminal). Sequence: YAMCREKQPMVPESLADYITAAYVEMRREAWASKDATYT SARTLLAILR LSTALARLRMVDVVEKEDVNEAIRLMEMSKDSLLGDKGQ TARTQRPADVIFATVRELVS GGRSVRFSEAEQRCVSRGFTPAQFQAALDEYEELNVWQ VNASRTRITFV Database link: P33993  Run BLAST with  Run BLAST with
Positive control	Human HeLa, SiHa, C33A, WI38 cell extracts; Mouse NIH 3T3 cell extract.
General notes	<p>The Life Science industry has been in the grips of a reproducibility crisis for a number of years. Abcam is leading the way in addressing this with our range of recombinant monoclonal antibodies and knockout edited cell lines for gold-standard validation. Please check that this product meets your needs before purchasing.</p> <p>If you have any questions, special requirements or concerns, please send us an inquiry and/or contact our Support team ahead of purchase. Recommended alternatives for this product can be found below, along with publications, customer reviews and Q&As</p>

Properties

Form	Liquid
Storage instructions	Shipped at 4°C. Store at +4°C short term (1-2 weeks). Upon delivery aliquot. Store at -20°C long

	term. Avoid freeze / thaw cycle.
Storage buffer	pH: 6 Constituents: 50% Glycerol (glycerin, glycerine), 50% PBS
Purity	Protein A purified
Purification notes	ab179904 is filter-sterilised.
Clonality	Polyclonal
Isotype	IgG

Applications

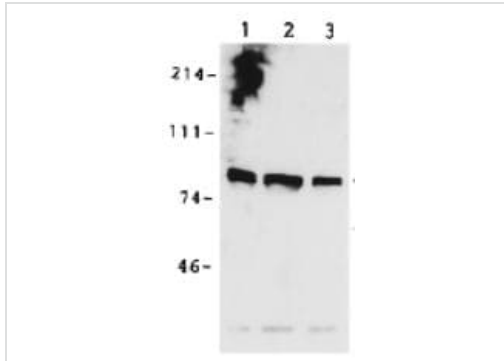
The Abpromise guarantee Our **Abpromise guarantee** covers the use of ab179904 in the following tested applications. The application notes include recommended starting dilutions; optimal dilutions/concentrations should be determined by the end user.

Application	Abreviews	Notes
WB	★★★★★ (1)	1/1000 - 1/5000. Predicted molecular weight: 81 kDa.
ICC/IF		1/200 - 1/1000.
IP		Use at an assay dependent concentration.

Target

Function	Acts as component of the MCM2-7 complex (MCM complex) which is the putative replicative helicase essential for 'once per cell cycle' DNA replication initiation and elongation in eukaryotic cells. The active ATPase sites in the MCM2-7 ring are formed through the interaction surfaces of two neighboring subunits such that a critical structure of a conserved arginine finger motif is provided in trans relative to the ATP-binding site of the Walker A box of the adjacent subunit. The six ATPase active sites, however, are likely to contribute differentially to the complex helicase activity. Required for S-phase checkpoint activation upon UV-induced damage.
Sequence similarities	Belongs to the MCM family. Contains 1 MCM domain.
Post-translational modifications	Phosphorylated upon DNA damage, probably by ATM or ATR.
Cellular localization	Nucleus.

Images



Western blot - Anti-MCM7/PRL antibody - BSA and Azide free (ab179904)

All lanes : Anti-MCM7/PRL antibody - BSA and Azide free (ab179904) at 1/1000 dilution

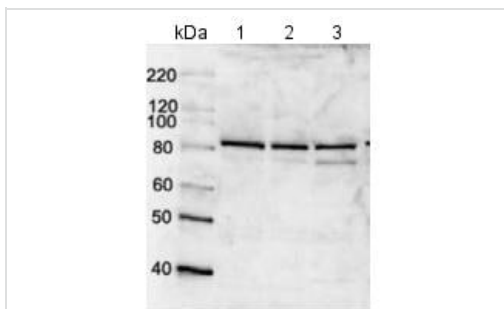
Lane 1 : SiHa whole cell extract

Lane 2 : C33A whole cell extract

Lane 3 : WI38 whole cell extract

Lysates/proteins at 100000 cells per lane.

Predicted band size: 81 kDa



Western blot - Anti-MCM7/PRL antibody - BSA and Azide free (ab179904)

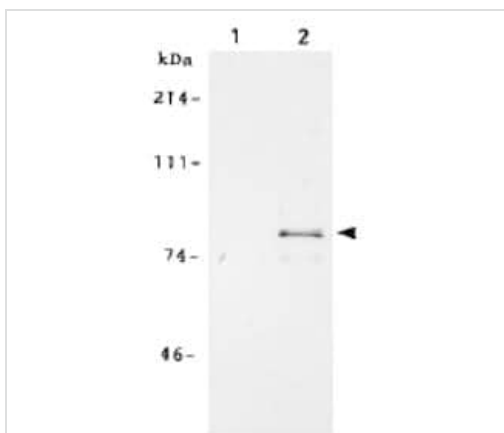
All lanes : Anti-MCM7/PRL antibody - BSA and Azide free (ab179904) at 1/2000 dilution

Lane 1 : HeLa whole cell extract

Lane 2 : HeLa whole cell extract treated with 100 nM adriamycin for 24 hours

Lane 3 : NIH 3T3 whole cell extract

Predicted band size: 81 kDa



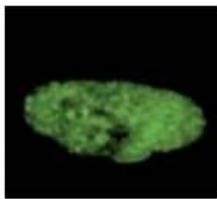
Immunoprecipitation - Anti-MCM7/PRL antibody - BSA and Azide free (ab179904)

Immunoprecipitation analysis on crude extracts of fibroblast cell line WI38 using ab179904.

Lane 1; Immunoprecipitation with pre-immune serum.

Lane 2; Immunoprecipitation with ab179904 antiserum.

Cells were labeled with S³⁵ methionine and MCM7/PRL was immunoprecipitated with ab179904 followed by SDS-PAGE and autoradiography.



Immunofluorescent staining and confocal microscopic analysis of formaldehyde-fixed G₁ phase HeLa cell nucleus, labeling MCM7/PRL using ab179904 at 1/200 dilution, after treatment with protein cross-linking reagent, DSP and chromatin extraction.

Immunocytochemistry/ Immunofluorescence - Anti-MCM7/PRL antibody - BSA and Azide free (ab179904)

Please note: All products are "FOR RESEARCH USE ONLY. NOT FOR USE IN DIAGNOSTIC PROCEDURES"

Our Abpromise to you: Quality guaranteed and expert technical support

- Replacement or refund for products not performing as stated on the datasheet
- Valid for 12 months from date of delivery
- Response to your inquiry within 24 hours
- We provide support in Chinese, English, French, German, Japanese and Spanish
- Extensive multi-media technical resources to help you
- We investigate all quality concerns to ensure our products perform to the highest standards

If the product does not perform as described on this datasheet, we will offer a refund or replacement. For full details of the Abpromise, please visit <https://www.abcam.com/abpromise> or contact our technical team.

Terms and conditions

- Guarantee only valid for products bought direct from Abcam or one of our authorized distributors