

### Anti-MCP1 antibody [2.2-4H5-1A11] **ab9858**

[1 Abreviews](#) [4 References](#) [2 Images](#)

#### Overview

<b>Product name</b>	Anti-MCP1 antibody [2.2-4H5-1A11]
<b>Description</b>	Mouse monoclonal [2.2-4H5-1A11] to MCP1
<b>Host species</b>	Mouse
<b>Tested applications</b>	<b>Suitable for:</b> WB, IHC-P, ELISA, Sandwich ELISA
<b>Species reactivity</b>	<b>Reacts with:</b> Human, Recombinant fragment
<b>Immunogen</b>	Recombinant full length protein corresponding to Human MCP1. Recombinant hMCAF/MCP-1 (human Macrophage/Monocyte chemotactic protein-1) Database link: <a href="#">P13500</a>
<b>Positive control</b>	WB: Recombinant human MCP1 protein ( <a href="#">ab9670</a> ).
<b>General notes</b>	<p>This product is no longer batch tested in IHC, for an IHC validated antibody please see <a href="#">ab73680</a></p> <p>The Life Science industry has been in the grips of a reproducibility crisis for a number of years. Abcam is leading the way in addressing this with our range of recombinant monoclonal antibodies and knockout edited cell lines for gold-standard validation. Please check that this product meets your needs before purchasing.</p> <p>If you have any questions, special requirements or concerns, please send us an inquiry and/or contact our Support team ahead of purchase. Recommended alternatives for this product can be found below, along with publications, customer reviews and Q&amp;As</p>

#### Properties

<b>Form</b>	Lyophilized:Reconstitute with 500µl of sterile water. Please note that if you receive this product in liquid form it has already been reconstituted as described and no further reconstitution is necessary.
<b>Storage instructions</b>	Shipped at 4°C. Store at +4°C short term (1-2 weeks). Upon delivery aliquot. Store at -20°C long term.
<b>Purity</b>	Protein A purified
<b>Clonality</b>	Monoclonal
<b>Clone number</b>	2.2-4H5-1A11
<b>Myeloma</b>	unknown
<b>Isotype</b>	IgG1

## Applications

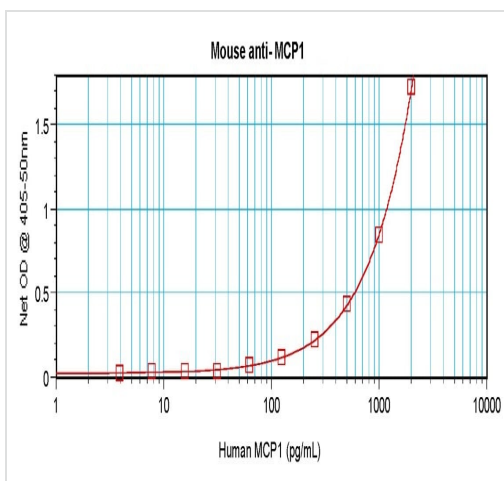
**The Abpromise guarantee** Our **Abpromise guarantee** covers the use of ab9858 in the following tested applications. The application notes include recommended starting dilutions; optimal dilutions/concentrations should be determined by the end user.

Application	Abreviews	Notes
WB		Use at an assay dependent concentration.
IHC-P		Use at an assay dependent concentration.
ELISA		Use at an assay dependent concentration.
Sandwich ELISA		Use a concentration of 1 µg/ml. Can be paired for Sandwich ELISA with <b>Rabbit polyclonal to MCP1 (ab9669)</b> . For sandwich ELISA, use this antibody as Capture at 1 µg/ml with <b>ab9669</b> as Detection.

## Target

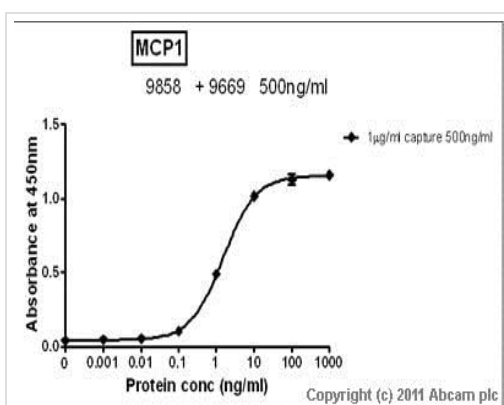
<b>Function</b>	Chemotactic factor that attracts monocytes and basophils but not neutrophils or eosinophils. Augments monocyte anti-tumor activity. Has been implicated in the pathogenesis of diseases characterized by monocytic infiltrates, like psoriasis, rheumatoid arthritis or atherosclerosis. May be involved in the recruitment of monocytes into the arterial wall during the disease process of atherosclerosis.
<b>Sequence similarities</b>	Belongs to the intercrine beta (chemokine CC) family.
<b>Post-translational modifications</b>	Processing at the N-terminus can regulate receptor and target cell selectivity. Deletion of the N-terminal residue converts it from an activator of basophil to an eosinophil chemoattractant.
<b>Cellular localization</b>	Secreted.

## Images



Sandwich ELISA - Anti-MCP1 antibody [2.2-4H5-1A11] (ab9858)

In a sandwich ELISA (assuming 100 µl/well), a concentration of 1.0-2.0 µg/ml of this antibody will detect at least 100 pg/mL of Recombinant Human MCP-1 when used with Biotin Anti-MCP1 antibody (**ab271250**) as the detection antibody at a concentration of approximately 0.5-1.0 µg/mL.



Sandwich ELISA - Anti-MCP1 antibody [2.2-4H5-1A11] (ab9858)

Standard curve for MCP1 (Analyte: **ab73866**); dilution range 1pg/ml to 1µg/ml using Capture Antibody Mouse monoclonal to MCP1 (ab9858) at 1µg/ml and Detector Antibody Rabbit polyclonal to MCP1 (**ab9669**) at 0.5µg/ml.

**Please note:** All products are "FOR RESEARCH USE ONLY. NOT FOR USE IN DIAGNOSTIC PROCEDURES"

## Our Abpromise to you: Quality guaranteed and expert technical support

- Replacement or refund for products not performing as stated on the datasheet
- Valid for 12 months from date of delivery
- Response to your inquiry within 24 hours
- We provide support in Chinese, English, French, German, Japanese and Spanish
- Extensive multi-media technical resources to help you
- We investigate all quality concerns to ensure our products perform to the highest standards

If the product does not perform as described on this datasheet, we will offer a refund or replacement. For full details of the Abpromise, please visit <https://www.abcam.com/abpromise> or contact our technical team.

## Terms and conditions

- Guarantee only valid for products bought direct from Abcam or one of our authorized distributors