


Anti-MCP1 antibody ab73680

★★★★★ [1 Abreviews](#) [9 References](#) [1 Image](#)

Overview

| | |
|----------------------------|---|
| Product name | Anti-MCP1 antibody |
| Description | Rabbit polyclonal to MCP1 |
| Host species | Rabbit |
| Tested applications | Suitable for: WB |
| Species reactivity | Reacts with: Human Predicted to work with: Chimpanzee, Rhesus monkey, Orangutan  |
| Immunogen | Synthetic peptide corresponding to Human MCP1 aa 50 to the C-terminus (C terminal) conjugated to keyhole limpet haemocyanin. (Peptide available as ab73679) |
| Positive control | This antibody gave a positive signal in the following Human Whole Cell Lysates: HCT 116, HeLa |
| General notes | <p>The Life Science industry has been in the grips of a reproducibility crisis for a number of years. Abcam is leading the way in addressing this with our range of recombinant monoclonal antibodies and knockout edited cell lines for gold-standard validation. Please check that this product meets your needs before purchasing.</p> <p>If you have any questions, special requirements or concerns, please send us an inquiry and/or contact our Support team ahead of purchase. Recommended alternatives for this product can be found below, along with publications, customer reviews and Q&As</p> |

Properties

| | |
|-----------------------------|--|
| Form | Liquid |
| Storage instructions | Shipped at 4°C. Store at +4°C short term (1-2 weeks). Upon delivery aliquot. Store at -20°C or -80°C. Avoid freeze / thaw cycle. |
| Storage buffer | pH: 7.40 Preservative: 0.02% Sodium azide Constituent: PBS Batches of this product that have a concentration < 1mg/ml may have BSA added as a stabilising agent. If you would like information about the formulation of a specific lot, please contact our scientific support team who will be happy to help. |
| Purity | Immunogen affinity purified |

| | |
|------------------|------------|
| Clonality | Polyclonal |
| Isotype | IgG |

Applications

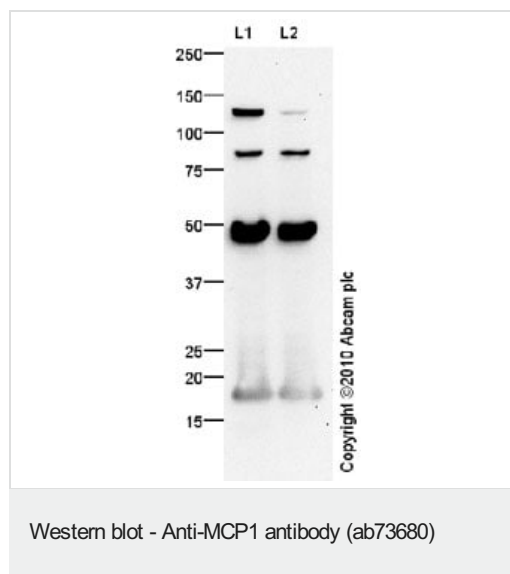
The Abpromise guarantee Our **Abpromise guarantee** covers the use of ab73680 in the following tested applications. The application notes include recommended starting dilutions; optimal dilutions/concentrations should be determined by the end user.

| Application | Abreviews | Notes |
|-------------|-----------|--|
| WB | | Use a concentration of 1 µg/ml. Detects a band of approximately 17 kDa (predicted molecular weight: 11 kDa). |

Target

| | |
|---|--|
| Function | Chemotactic factor that attracts monocytes and basophils but not neutrophils or eosinophils. Augments monocyte anti-tumor activity. Has been implicated in the pathogenesis of diseases characterized by monocytic infiltrates, like psoriasis, rheumatoid arthritis or atherosclerosis. May be involved in the recruitment of monocytes into the arterial wall during the disease process of atherosclerosis. |
| Sequence similarities | Belongs to the intercrine beta (chemokine CC) family. |
| Post-translational modifications | Processing at the N-terminus can regulate receptor and target cell selectivity. Deletion of the N-terminal residue converts it from an activator of basophil to an eosinophil chemoattractant. |
| Cellular localization | Secreted. |

Images



All lanes : Anti-MCP1 antibody (ab73680) at 1 µg/ml

Lane 1 : HeLa (Human epithelial carcinoma cell line) Whole Cell Lysate

Lane 2 : HCT 116 (Human Colorectal Carcinoma) Whole Cell Lysate

Lysates/proteins at 10 µg per lane.

Secondary

All lanes : Goat Anti-Rabbit IgG H&L (HRP) (**ab97051**) at 1/10000 dilution

Developed using the ECL technique.

Performed under reducing conditions.

Predicted band size: 11 kDa

Observed band size: 17 kDa

Additional bands at: 125 kDa, 50 kDa (possible glycosylated form), 80 kDa. We are unsure as to the identity of these extra bands.

The expression profile observed is consistent with what has been described in the literature (e.g. PMID 12957789). We believe the 50kDa band is a glycosylated form of Human MCP1.

Please note: All products are "FOR RESEARCH USE ONLY. NOT FOR USE IN DIAGNOSTIC PROCEDURES"

Our Abpromise to you: Quality guaranteed and expert technical support

- Replacement or refund for products not performing as stated on the datasheet
- Valid for 12 months from date of delivery
- Response to your inquiry within 24 hours
- We provide support in Chinese, English, French, German, Japanese and Spanish
- Extensive multi-media technical resources to help you
- We investigate all quality concerns to ensure our products perform to the highest standards

If the product does not perform as described on this datasheet, we will offer a refund or replacement. For full details of the Abpromise, please visit <https://www.abcam.com/abpromise> or contact our technical team.

Terms and conditions

- Guarantee only valid for products bought direct from Abcam or one of our authorized distributors