

Anti-MCP1 antibody [ECE.2] ab8101

★★★★★ [1 Abreviews](#) [28 References](#) [1 Image](#)

Overview

Product name	Anti-MCP1 antibody [ECE.2]
Description	Rat monoclonal [ECE.2] to MCP1
Host species	Rat
Specificity	The antibody reacts with murine JE / MCP-1.
Tested applications	Suitable for: IHC-Fr
Species reactivity	Reacts with: Mouse Does not react with: Human
Immunogen	Synthetic peptide. This information is proprietary to Abcam and/or its suppliers.
Positive control	Recombinant mouse MCP1 protein (ab9901) can be used as a positive control in WB.
General notes	<p>The Life Science industry has been in the grips of a reproducibility crisis for a number of years. Abcam is leading the way in addressing this with our range of recombinant monoclonal antibodies and knockout edited cell lines for gold-standard validation. Please check that this product meets your needs before purchasing.</p> <p>If you have any questions, special requirements or concerns, please send us an inquiry and/or contact our Support team ahead of purchase. Recommended alternatives for this product can be found below, along with publications, customer reviews and Q&As</p>

Properties

Form	Liquid
Storage instructions	Shipped at 4°C. Upon delivery aliquot and store at -20°C. Avoid freeze / thaw cycles.
Storage buffer	Preservative: 0.02% Sodium azide Constituents: PBS, 0.1% BSA
Purity	Protein G purified
Purification notes	0.2 µm filtered antibody solution
Clonality	Monoclonal
Clone number	ECE.2
Isotype	IgG1

Applications

The Abpromise guarantee

Our **Abpromise guarantee** covers the use of ab8101 in the following tested applications.

The application notes include recommended starting dilutions; optimal dilutions/concentrations should be determined by the end user.

Application	Abreviews	Notes
IHC-Fr		Use at an assay dependent concentration.

Target

Function

Chemotactic factor that attracts monocytes and basophils but not neutrophils or eosinophils. Augments monocyte anti-tumor activity. Has been implicated in the pathogenesis of diseases characterized by monocytic infiltrates, like psoriasis, rheumatoid arthritis or atherosclerosis. May be involved in the recruitment of monocytes into the arterial wall during the disease process of atherosclerosis.

Sequence similarities

Belongs to the intercrine beta (chemokine CC) family.

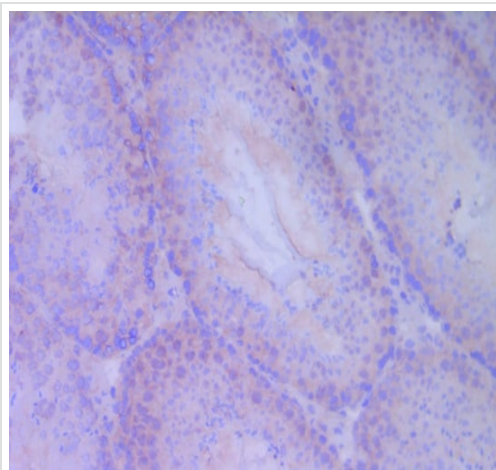
Post-translational modifications

Processing at the N-terminus can regulate receptor and target cell selectivity. Deletion of the N-terminal residue converts it from an activator of basophil to an eosinophil chemoattractant.

Cellular localization

Secreted.

Images



Immunohistochemistry (Frozen sections) - Anti-MCP1 antibody [ECE.2] (ab8101)

Detection of MCP-1 in mouse testis. ab8101 has been used in a 10x dilution, the magnification was 200x.

Please note: All products are "FOR RESEARCH USE ONLY. NOT FOR USE IN DIAGNOSTIC PROCEDURES"

Our Abpromise to you: Quality guaranteed and expert technical support

- Replacement or refund for products not performing as stated on the datasheet
- Valid for 12 months from date of delivery

- Response to your inquiry within 24 hours
- We provide support in Chinese, English, French, German, Japanese and Spanish
- Extensive multi-media technical resources to help you
- We investigate all quality concerns to ensure our products perform to the highest standards

If the product does not perform as described on this datasheet, we will offer a refund or replacement. For full details of the Abpromise, please visit <https://www.abcam.com/abpromise> or contact our technical team.

Terms and conditions

- Guarantee only valid for products bought direct from Abcam or one of our authorized distributors