

## Product datasheet

# Anti-MCT 10 antibody ab121519

[1 References](#) [2 Images](#)

### Overview

---

<b>Product name</b>	Anti-MCT 10 antibody
<b>Description</b>	Rabbit polyclonal to MCT 10
<b>Host species</b>	Rabbit
<b>Tested applications</b>	<b>Suitable for:</b> IHC-P, ICC/IF
<b>Species reactivity</b>	<b>Reacts with:</b> Human
<b>Immunogen</b>	Recombinant fragment corresponding to Human MCT 10 aa 474-514 (C terminal). Sequence: SKKQREISKTTGKEKMEKMLENQNSLLSSSSGMFKKESD SI <a href="#">Run BLAST with</a> <a href="#">Run BLAST with</a>
<b>Positive control</b>	IHC: Human skeletal muscle tissue. ICC-IF: human cell line CACO-2
<b>General notes</b>	<p>The Life Science industry has been in the grips of a reproducibility crisis for a number of years. Abcam is leading the way in addressing this with our range of recombinant monoclonal antibodies and knockout edited cell lines for gold-standard validation. Please check that this product meets your needs before purchasing.</p> <p>If you have any questions, special requirements or concerns, please send us an inquiry and/or contact our Support team ahead of purchase. Recommended alternatives for this product can be found below, along with publications, customer reviews and Q&amp;As</p>

### Properties

---

<b>Form</b>	Liquid
<b>Storage instructions</b>	Shipped at 4°C. Upon delivery aliquot and store at -20°C. Avoid freeze / thaw cycles.
<b>Storage buffer</b>	pH: 7.20 Preservative: 0.02% Sodium azide Constituents: 40% Glycerol (glycerin, glycerine), 59% PBS
<b>Purity</b>	Immunogen affinity purified
<b>Clonality</b>	Polyclonal
<b>Isotype</b>	IgG

## Applications

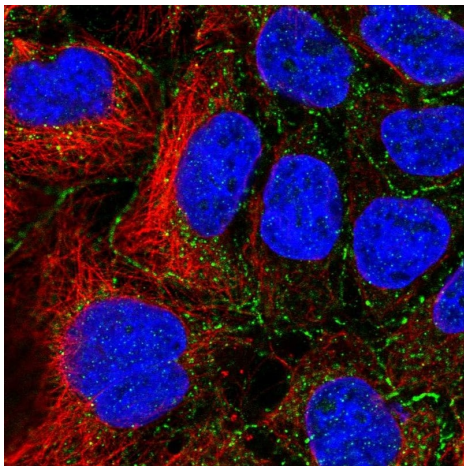
**The Abpromise guarantee** Our **Abpromise guarantee** covers the use of ab121519 in the following tested applications. The application notes include recommended starting dilutions; optimal dilutions/concentrations should be determined by the end user.

Application	Abreviews	Notes
IHC-P		1/20 - 1/50. Perform heat mediated antigen retrieval with citrate buffer pH 6 before commencing with IHC staining protocol.
ICC/IF		Use a concentration of 0.25 - 0.2 µg/ml.

## Target

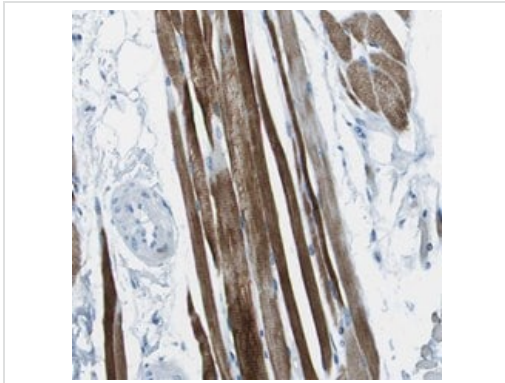
<b>Function</b>	Sodium-independent transporter that mediates the update of aromatic acid. Can function as a net efflux pathway for aromatic amino acids in the basolateral epithelial cells.
<b>Tissue specificity</b>	Strongly expressed in kidney and skeletal muscle and at lower level in placenta and heart.
<b>Sequence similarities</b>	Belongs to the major facilitator superfamily. Monocarboxylate porter (TC 2.A.1.13) family.
<b>Post-translational modifications</b>	Not N-glycosylated.
<b>Cellular localization</b>	Cell membrane. Basolateral cell membrane.

## Images



Immunofluorescent staining of MCT 10 using ab121519 at 2 µg/ml in human cell line CACO-2

Immunocytochemistry/ Immunofluorescence - Anti-MCT 10 antibody (ab121519)



ab121519 at 1/10 dilution staining MCT 10 in Paraffin-embedded Human Skeletal muscle tissue by Immunohistochemistry.

Immunohistochemistry (Formalin/PFA-fixed paraffin-embedded sections) - Anti-MCT 10 antibody (ab121519)

**Please note:** All products are "FOR RESEARCH USE ONLY. NOT FOR USE IN DIAGNOSTIC PROCEDURES"

### **Our Abpromise to you: Quality guaranteed and expert technical support**

---

- Replacement or refund for products not performing as stated on the datasheet
- Valid for 12 months from date of delivery
- Response to your inquiry within 24 hours
- We provide support in Chinese, English, French, German, Japanese and Spanish
- Extensive multi-media technical resources to help you
- We investigate all quality concerns to ensure our products perform to the highest standards

If the product does not perform as described on this datasheet, we will offer a refund or replacement. For full details of the Abpromise, please visit <https://www.abcam.com/abpromise> or contact our technical team.

### **Terms and conditions**

---

- Guarantee only valid for products bought direct from Abcam or one of our authorized distributors