


## Product datasheet

# Anti-MDH1 antibody [EPR13597(B)] - C-terminal ab180152

Recombinant RabMAb

[10 References](#) [5 Images](#)

### Overview

<b>Product name</b>	Anti-MDH1 antibody [EPR13597(B)] - C-terminal
<b>Description</b>	Rabbit monoclonal [EPR13597(B)] to MDH1 - C-terminal
<b>Host species</b>	Rabbit
<b>Tested applications</b>	<b>Suitable for:</b> Flow Cyt (Intra), ICC/IF, IP, WB
<b>Species reactivity</b>	<b>Reacts with:</b> Human <b>Predicted to work with:</b> Mouse, Rat 
<b>Immunogen</b>	Synthetic peptide. This information is proprietary to Abcam and/or its suppliers.
<b>Positive control</b>	Jurkat, HeLa and HepG2 whole cell lysate ( <a href="#">ab7900</a> ); HeLa cells.
<b>General notes</b>	This product is a recombinant monoclonal antibody, which offers several advantages including: <ul style="list-style-type: none"> <li>- High batch-to-batch consistency and reproducibility</li> <li>- Improved sensitivity and specificity</li> <li>- Long-term security of supply</li> <li>- Animal-free production</li> </ul> For more information <a href="#">see here</a> . Our RabMAb <sup>®</sup> technology is a patented hybridoma-based technology for making rabbit monoclonal antibodies. For details on our patents, please refer to <a href="#">RabMAb<sup>®</sup> patents</a> .

### Properties

<b>Form</b>	Liquid
<b>Storage instructions</b>	Shipped at 4°C. Store at +4°C short term (1-2 weeks). Upon delivery aliquot. Store at -20°C long term. Avoid freeze / thaw cycle.
<b>Storage buffer</b>	Preservative: 0.01% Sodium azide Constituents: 59% PBS, 40% Glycerol, 0.05% BSA
<b>Purity</b>	Protein A purified
<b>Clonality</b>	Monoclonal
<b>Clone number</b>	EPR13597(B)

Isotype

IgG

## Applications

### The Abpromise guarantee

Our **Abpromise guarantee** covers the use of ab180152 in the following tested applications.

The application notes include recommended starting dilutions; optimal dilutions/concentrations should be determined by the end user.

Application	Abreviews	Notes
Flow Cyt (Intra)		1/20. <b>ab172730</b> - Rabbit monoclonal IgG, is suitable for use as an isotype control with this antibody.
ICC/IF		1/250.
IP		1/50.
WB		1/10000 - 1/50000. Detects a band of approximately 36 kDa (predicted molecular weight: 36 kDa).

## Target

### Sequence similarities

Belongs to the LDH/MDH superfamily. MDH type 2 family.

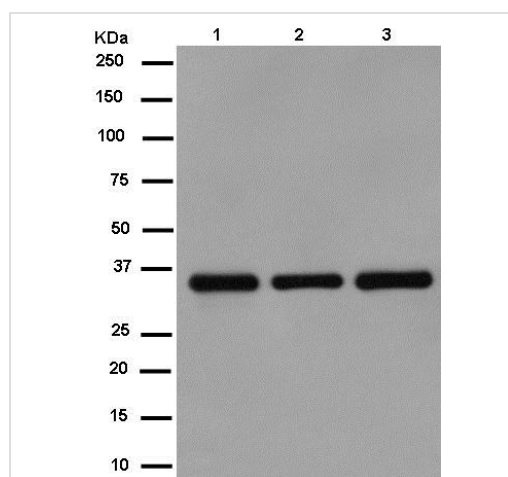
### Post-translational modifications

ISGylated.

### Cellular localization

Cytoplasm.

## Images



Western blot - Anti-MDH1 antibody [EPR13597(B)] - C-terminal (ab180152)

**All lanes** : Anti-MDH1 antibody [EPR13597(B)] - C-terminal (ab180152) at 1/50000 dilution

**Lane 1** : Jurkat cell lysate

**Lane 2** : HeLa cell lysate

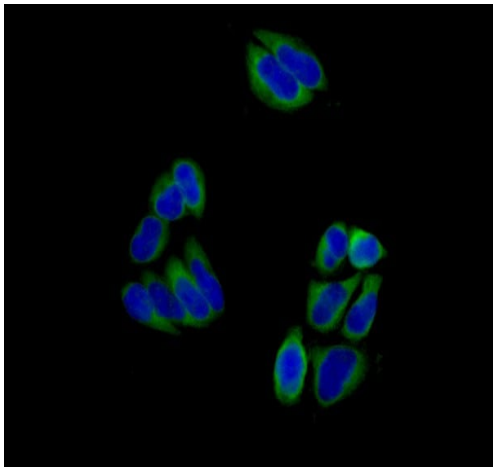
**Lane 3** : HepG2 cell lysate

Lysates/proteins at 20 µg per lane.

### Secondary

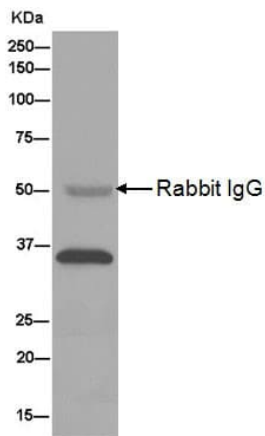
**All lanes** : Goat Anti-Rabbit IgG, (H+L), Peroxidase conjugated at 1/1000 dilution

**Predicted band size:** 36 kDa



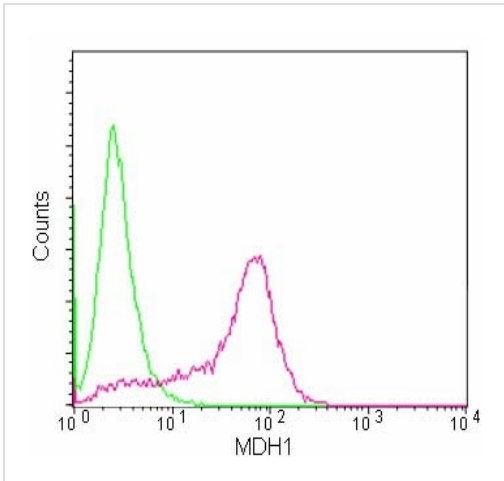
Immunocytochemistry/ Immunofluorescence - Anti-MDH1 antibody [EPR13597(B)] - C-terminal (ab180152)

Immunofluorescent analysis of 4% paraformaldehyde-fixed HeLa cells labeling MDH1 with ab180152 at 1/250 dilution, followed by Goat anti rabbit IgG (Dylight 488) at 1/250 dilution. Counter stained with DAPI.



Immunoprecipitation - Anti-MDH1 antibody [EPR13597(B)] - C-terminal (ab180152)





Western blot analysis of HepG2 cell lysate immunoprecipitated with ab180152 at 1/50 dilution followed by Goat Anti-Rabbit IgG, (H+L), Peroxidase conjugated secondary antibody at 1/1000 dilution



Intracellular flow cytometric analysis of 2% paraformaldehyde-fixed HeLa cells labeling MDH1 with ab180152 at 1/20 dilution followed by Goat anti rabbit IgG (FITC) at 1/75 dilution (red), compared to a Rabbit IgG control (green).

Flow Cytometry (Intracellular) - Anti-MDH1 antibody [EPR13597(B)] - C-terminal (ab180152)

Why choose a recombinant antibody?

 <b>Research with confidence</b> Consistent and reproducible results	 <b>Long-term and scalable supply</b> Recombinant technology
 <b>Success from the first experiment</b> Confirmed specificity	 <b>Ethical standards compliant</b> Animal-free production

Anti-MDH1 antibody [EPR13597(B)] - C-terminal (ab180152)

**Please note:** All products are "FOR RESEARCH USE ONLY. NOT FOR USE IN DIAGNOSTIC PROCEDURES"

**Our Abpromise to you: Quality guaranteed and expert technical support**

- Replacement or refund for products not performing as stated on the datasheet
- Valid for 12 months from date of delivery
- Response to your inquiry within 24 hours
- We provide support in Chinese, English, French, German, Japanese and Spanish
- Extensive multi-media technical resources to help you
- We investigate all quality concerns to ensure our products perform to the highest standards

If the product does not perform as described on this datasheet, we will offer a refund or replacement. For full details of the Abpromise, please visit <https://www.abcam.com/abpromise> or contact our technical team.

## Terms and conditions

---

- Guarantee only valid for products bought direct from Abcam or one of our authorized distributors