

### Anti-MDH2 antibody [2F5AF8] ab110317

[2 References](#) [2 Images](#)

#### Overview

<b>Product name</b>	Anti-MDH2 antibody [2F5AF8]
<b>Description</b>	Mouse monoclonal [2F5AF8] to MDH2
<b>Host species</b>	Mouse
<b>Tested applications</b>	<b>Suitable for:</b> ICC/IF, IP
<b>Species reactivity</b>	<b>Reacts with:</b> Mouse, Rat, Human
<b>Immunogen</b>	Full length protein. This information is proprietary to Abcam and/or its suppliers.
<b>Positive control</b>	HDFn fibroblast cells Human heart homogenate Rat liver homogenate Mouse liver homogenate HepG2 whole cell lysate ( <a href="#">ab7900</a> )
<b>General notes</b>	<p>This antibody clone is manufactured by Abcam. If you require a custom buffer formulation or conjugation for your experiments, please contact <a href="mailto:orders@abcam.com">orders@abcam.com</a>.</p> <p>The Life Science industry has been in the grips of a reproducibility crisis for a number of years. Abcam is leading the way in addressing this with our range of recombinant monoclonal antibodies and knockout edited cell lines for gold-standard validation. Please check that this product meets your needs before purchasing.</p> <p>If you have any questions, special requirements or concerns, please send us an inquiry and/or contact our Support team ahead of purchase. Recommended alternatives for this product can be found below, along with publications, customer reviews and Q&amp;As</p> <p>Product was previously marketed under the MitoSciences sub-brand.</p>

#### Properties

<b>Form</b>	Liquid
<b>Storage instructions</b>	Shipped at 4°C. Store at +4°C. Do Not Freeze.
<b>Storage buffer</b>	pH: 7.5 Preservative: 0.02% Sodium azide Constituent: HEPES buffered saline
<b>Purity</b>	Proprietary Purification
<b>Purification notes</b>	The antibody was produced in vitro using hybridomas grown in serum-free medium, and then purified by biochemical fractionation. Purity >95% by SDS-PAGE.
<b>Clonality</b>	Monoclonal

Clone number	2F5AF8
Isotype	IgG1
Light chain type	kappa

## Applications

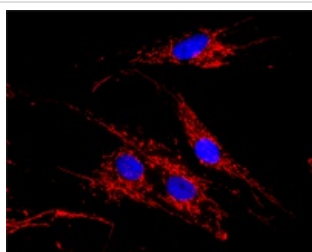
**The Abpromise guarantee** Our **Abpromise guarantee** covers the use of ab110317 in the following tested applications. The application notes include recommended starting dilutions; optimal dilutions/concentrations should be determined by the end user.

Application	Abreviews	Notes
ICC/IF		Use a concentration of 1 - 4 µg/ml.
IP		Use at an assay dependent concentration.

## Target

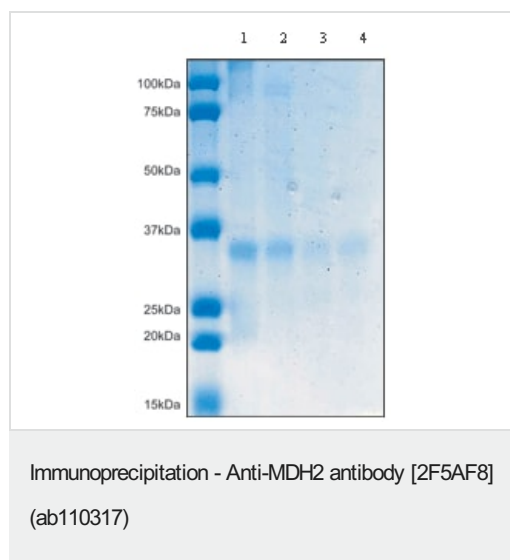
<b>Sequence similarities</b>	Belongs to the LDH/MDH superfamily. MDH type 1 family.
<b>Post-translational modifications</b>	Acetylation is enhanced by up to 67% after treatment either with trichostin A (TSA) or with nicotinamide (NAM) with the appearance of tri- and tetraacetylations. Glucose also increases acetylation by about 60%.
<b>Cellular localization</b>	Mitochondrion matrix.

## Images



Immunocytochemistry/ Immunofluorescence - Anti-MDH2 antibody [2F5AF8] (ab110317)

Immunocytochemistry image of stained HDFn (Human dermal fibroblasts) fibroblast cells. The cells were paraformaldehyde fixed (4%, 20 minutes) and Triton X-100 permeabilized (0.1%, 15 min). The cells were incubated with the ab110317 (1 µg/mL) for 2 hours at room temperature or over night at 4°C. The secondary antibody was (red) Alexa Fluor® 594 goat anti-mouse IgG (H+L) at a 1/1000 dilution for 1 hour. 10% Goat serum was used as the blocking agent for all blocking steps. The target protein locates to the mitochondrial matrix.



ab110317 pulls down the 33kDa MDH2 protein from Human heart homogenate (1), Rat liver homogenate (2), Mouse liver homogenate (3) and HepG2 whole cell lysate (4). The identity of this protein was confirmed by mass spectrometry. This gel was stained with coomassie.

**Lane 1 :** Anti-MDH2 antibody [2F5AF8] (ab110317)

**All lanes :**

**Please note:** All products are "FOR RESEARCH USE ONLY. NOT FOR USE IN DIAGNOSTIC PROCEDURES"

### Our Abpromise to you: Quality guaranteed and expert technical support

- Replacement or refund for products not performing as stated on the datasheet
- Valid for 12 months from date of delivery
- Response to your inquiry within 24 hours
- We provide support in Chinese, English, French, German, Japanese and Spanish
- Extensive multi-media technical resources to help you
- We investigate all quality concerns to ensure our products perform to the highest standards

If the product does not perform as described on this datasheet, we will offer a refund or replacement. For full details of the Abpromise, please visit <https://www.abcam.com/abpromise> or contact our technical team.

### Terms and conditions

- Guarantee only valid for products bought direct from Abcam or one of our authorized distributors