

Product datasheet

Anti-ME2 antibody [EPR7218] ab126616

Recombinant RabMAb

8 Images

Overview

Product name	Anti-ME2 antibody [EPR7218]
Description	Rabbit monoclonal [EPR7218] to ME2
Host species	Rabbit
Tested applications	Suitable for: Flow Cyt (Intra), WB, IHC-P, ICC/IF
Species reactivity	Reacts with: Human Does not react with: Rat
Immunogen	Synthetic peptide. This information is proprietary to Abcam and/or its suppliers.
Positive control	Jurkat, HeLa, K562 and MOLT4 cell lysates; Human colon tissue; HeLa cells; 293T .
General notes	<p>This product is a recombinant monoclonal antibody, which offers several advantages including:</p> <ul style="list-style-type: none"> - High batch-to-batch consistency and reproducibility - Improved sensitivity and specificity - Long-term security of supply - Animal-free production <p>For more information see here.</p> <p>Our RabMAb[®] technology is a patented hybridoma-based technology for making rabbit monoclonal antibodies. For details on our patents, please refer to RabMAb[®] patents.</p> <p>Mouse: We have preliminary internal testing data to indicate this antibody may not react with this species. Please contact us for more information.</p>

Properties

Form	Liquid
Storage instructions	Shipped at 4°C. Store at +4°C short term (1-2 weeks). Upon delivery aliquot. Store at -20°C long term. Stable for 12 months at -20°C.
Storage buffer	<p>pH: 7.20</p> <p>Preservative: 0.01% Sodium azide</p> <p>Constituents: 59% PBS, 0.05% BSA, 40% Glycerol (glycerin, glycerine)</p>
Purity	Protein A purified
Clonality	Monoclonal

Clone number EPR7218

Isotype IgG

Applications

The Abpromise guarantee Our **Abpromise guarantee** covers the use of ab126616 in the following tested applications. The application notes include recommended starting dilutions; optimal dilutions/concentrations should be determined by the end user.

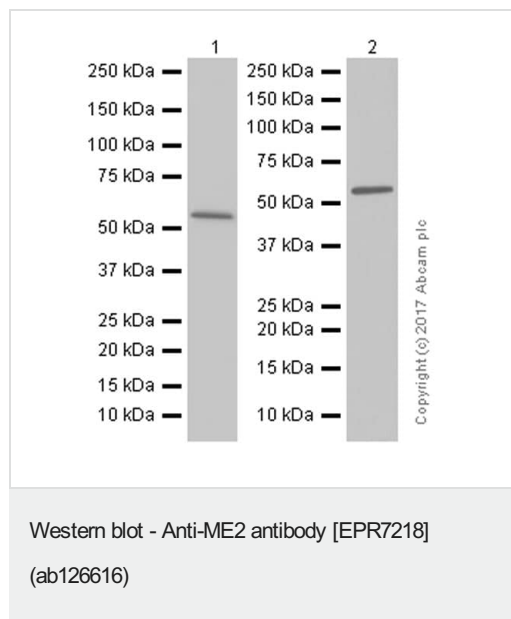
Application	Abreviews	Notes
Flow Cyt (Intra)		1/150.
WB		1/1000 - 1/10000. Detects a band of approximately 65 kDa (predicted molecular weight: 65 kDa).
IHC-P		1/1000. Perform heat mediated antigen retrieval before commencing with IHC staining protocol. For unpurified use at 1/50 - 1/100.
ICC/IF		1/100 - 1/250.

Target

Sequence similarities Belongs to the malic enzymes family.

Cellular localization Mitochondrion matrix.

Images



All lanes : Anti-ME2 antibody [EPR7218] (ab126616) at 1/5000 dilution (purified)

Lane 1 : HeLa (Human cervix adenocarcinoma epithelial cell) whole cell lysates

Lane 2 : 293T (Human embryonic kidney epithelial cell) whole cell lysates

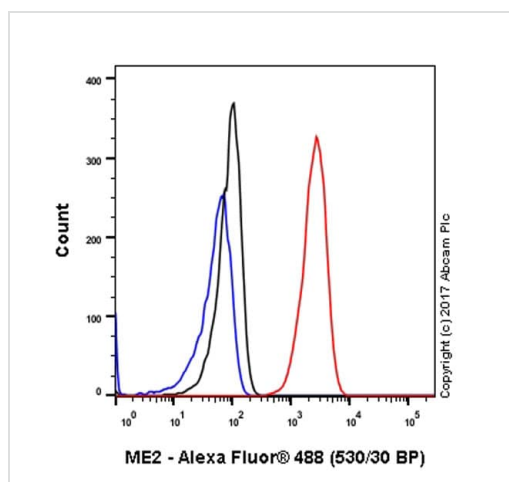
Lysates/proteins at 15 µg per lane.

Secondary

All lanes : Goat Anti-Rabbit IgG H&L (HRP) (**ab97051**) at 1/20000 dilution

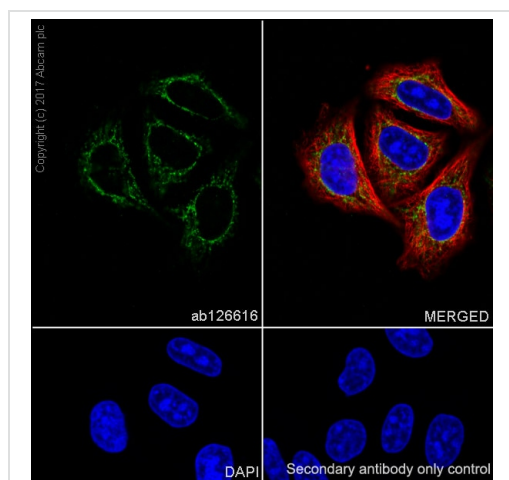
Predicted band size: 65 kDa

Blocking and diluting buffer: 5% NFDM/TBST



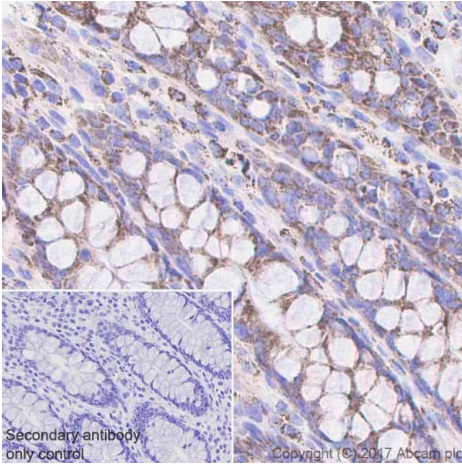
Flow Cytometry (Intracellular) - Anti-ME2 antibody
[EPR7218] (ab126616)

Intracellular Flow Cytometry analysis of Jurkat (Human T cell leukemia T lymphocyte) cells labeling ME2 with purified ab126616 at 1/150 dilution (10 ug/ml) (red). Cells were fixed with 4% Paraformaldehyde and permeabilized with 90% Methanol. A Goat anti rabbit IgG (Alexa Fluor® 488) secondary antibody was used at 1/2000 dilution. Isotype control - Rabbit monoclonal IgG (Black). Unlabeled control - Cell without incubation with primary antibody and secondary antibody (Blue).



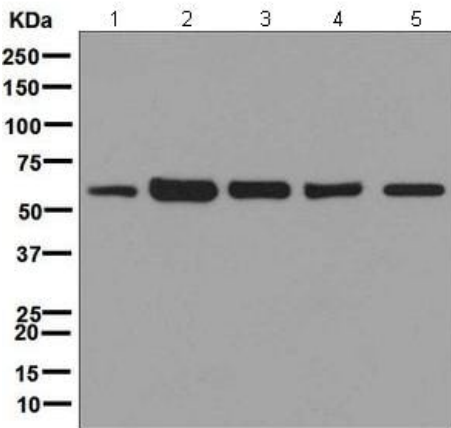
Immunocytochemistry/ Immunofluorescence - Anti-ME2 antibody [EPR7218] (ab126616)

Immunocytochemistry/ Immunofluorescence analysis of HeLa (Human cervix adenocarcinoma epithelial cell) cells labeling ME2 with purified ab126616 at 1:150 dilution (9.1 µg/ml). Cells were fixed in 100% Methanol. **ab150077** Goat anti rabbit IgG(Alexa Fluor® 488) was used as the secondary antibody at 1:1000 dilution. DAPI nuclear counterstain. PBS instead of the primary antibody was used as the secondary antibody only control.



Immunohistochemistry (Formalin/PFA-fixed paraffin-embedded sections) - Anti-ME2 antibody [EPR7218] (ab126616)

Immunohistochemistry (Formalin/PFA-fixed paraffin-embedded sections) analysis of human colon tissue sections labeling Me2 with Purified ab126616 at 1:1000 dilution (1.4 µg/ml). Heat mediated antigen retrieval was performed using [ab93684](#) (Tris/EDTA buffer, pH 9.0). Tissue was counterstained with Hematoxylin. ImmunoHistoProbe one step HRP Polymer (ready to use) secondary antibody was used at 1:0 dilution. PBS instead of the primary antibody was used as the negative control.



Western blot - Anti-ME2 antibody [EPR7218] (ab126616)

All lanes : Anti-ME2 antibody [EPR7218] (ab126616) at 1/1000 dilution (unpurified)

Lane 1 : 293T (Human embryonic kidney epithelial cell) cell lysate

Lane 2 : Jurkat cell lysate

Lane 3 : HeLa cell lysate

Lane 4 : K562 cell lysate

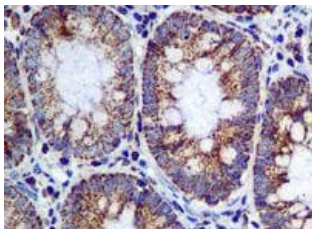
Lane 5 : MOLT4 cell lysate

Lysates/proteins at 10 µg per lane.

Secondary

All lanes : Goat Anti-rabbit HRP at 1/2000 dilution

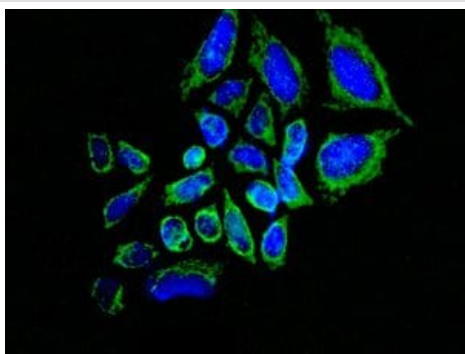
Predicted band size: 65 kDa



Immunohistochemistry (Formalin/PFA-fixed paraffin-embedded sections) - Anti-ME2 antibody [EPR7218] (ab126616)

Unpurified ab126616, at 1/50 dilution, staining ME2 in Formalin-fixed, Paraffin-embedded Human colon tissue by Immunohistochemistry.

Perform heat mediated antigen retrieval before commencing with IHC staining protocol.



Unpurified ab126616, at 1/100 dilution, staining ME2 in HeLa cells by Immunofluorescence.

Immunocytochemistry/ Immunofluorescence - Anti-ME2 antibody [EPR7218] (ab126616)

Why choose a recombinant antibody?



Research with confidence
Consistent and reproducible results



Long-term and scalable supply
Recombinant technology



Success from the first experiment
Confirmed specificity



Ethical standards compliant
Animal-free production

Anti-ME2 antibody [EPR7218] (ab126616)

Please note: All products are "FOR RESEARCH USE ONLY. NOT FOR USE IN DIAGNOSTIC PROCEDURES"

Our Abpromise to you: Quality guaranteed and expert technical support

- Replacement or refund for products not performing as stated on the datasheet
- Valid for 12 months from date of delivery
- Response to your inquiry within 24 hours
- We provide support in Chinese, English, French, German, Japanese and Spanish
- Extensive multi-media technical resources to help you
- We investigate all quality concerns to ensure our products perform to the highest standards

If the product does not perform as described on this datasheet, we will offer a refund or replacement. For full details of the Abpromise, please visit <https://www.abcam.com/abpromise> or contact our technical team.

Terms and conditions

- Guarantee only valid for products bought direct from Abcam or one of our authorized distributors