


Anti-MED13/GCT antibody ab76923

[4 References](#) [2 Images](#)

Overview

| | |
|----------------------------|---|
| Product name | Anti-MED13/GCT antibody |
| Description | Rabbit polyclonal to MED13/GCT |
| Host species | Rabbit |
| Tested applications | Suitable for: WB, IP |
| Species reactivity | Reacts with: Human Predicted to work with: Chimpanzee, Gorilla  |
| Immunogen | Synthetic peptide within Human MED13/GCT aa 300-400. The exact immunogen sequence used to generate this antibody is proprietary information. If additional detail on the immunogen is needed to determine the suitability of the antibody for your needs, please contact our Scientific Support team to discuss your requirements. NP_005112.2 Database link: Q9UHV7 |
| Positive control | HeLa and 293T whole cell lysates. |
| General notes | <p>The Life Science industry has been in the grips of a reproducibility crisis for a number of years. Abcam is leading the way in addressing this with our range of recombinant monoclonal antibodies and knockout edited cell lines for gold-standard validation. Please check that this product meets your needs before purchasing.</p> <p>If you have any questions, special requirements or concerns, please send us an inquiry and/or contact our Support team ahead of purchase. Recommended alternatives for this product can be found below, along with publications, customer reviews and Q&As</p> |

Properties

| | |
|-----------------------------|---|
| Form | Liquid |
| Storage instructions | Shipped at 4°C. Upon delivery aliquot and store at -20°C. Avoid freeze / thaw cycles. |
| Storage buffer | pH: 6.8 Preservative: 0.09% Sodium azide Constituents: 0.1% BSA, Tris buffered saline |
| Purity | Immunogen affinity purified |
| Clonality | Polyclonal |
| Isotype | IgG |

Applications

The Abpromise guarantee

Our **Abpromise guarantee** covers the use of ab76923 in the following tested applications.

The application notes include recommended starting dilutions; optimal dilutions/concentrations should be determined by the end user.

| Application | Abreviews | Notes |
|-------------|-----------|--|
| WB | | 1/2000 - 1/10000. Predicted molecular weight: 240 kDa. |
| IP | | Use at 2-5 µg/mg of lysate. |

Target

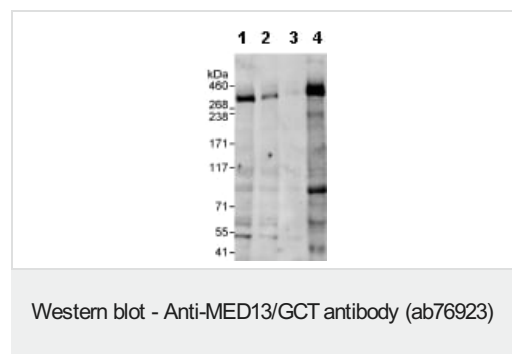
Relevance

MED13 is a member of the mediator complex that can act as both a positive and negative regulator of transcription. The mediator complex interacts with RNA pol II and its associated proteins, the general transcription factors. Mediator proteins serve as a bridge connecting the activator and basal transcription machinery.

Cellular localization

Nuclear

Images



All lanes : Anti-MED13/GCT antibody (ab76923) at 0.04 µg/ml

Lane 1 : HeLa whole cell lysate at 50 µg

Lane 2 : HeLa whole cell lysate at 15 µg

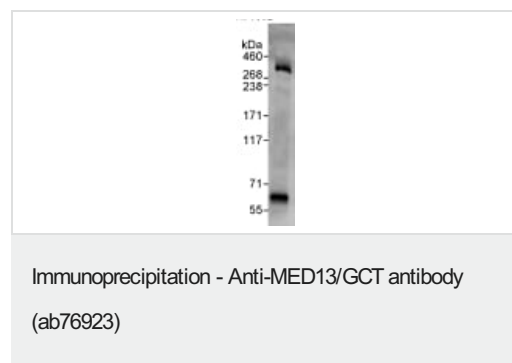
Lane 3 : HeLa whole cell lysate at 5 µg

Lane 4 : 293T whole cell lysate at 50 µg

Predicted band size: 240 kDa

Observed band size: 300 kDa

Exposure time: 3 minutes



Detection of MED13/GCT by Western Blot of Immunoprecipitate.

ab76923 at 1µg/ml staining MED13/GCT in HeLa whole cell lysate immunoprecipitated using ab76923 at 3µg/mg lysate (1 mg/IP; 20% of IP loaded/lane).

Detection: Chemiluminescence with exposure time of 30 seconds.

Please note: All products are "FOR RESEARCH USE ONLY. NOT FOR USE IN DIAGNOSTIC PROCEDURES"

Our Abpromise to you: Quality guaranteed and expert technical support

- Replacement or refund for products not performing as stated on the datasheet
- Valid for 12 months from date of delivery
- Response to your inquiry within 24 hours
- We provide support in Chinese, English, French, German, Japanese and Spanish
- Extensive multi-media technical resources to help you
- We investigate all quality concerns to ensure our products perform to the highest standards

If the product does not perform as described on this datasheet, we will offer a refund or replacement. For full details of the Abpromise, please visit <https://www.abcam.com/abpromise> or contact our technical team.

Terms and conditions

- Guarantee only valid for products bought direct from Abcam or one of our authorized distributors