


Product datasheet

Anti-MEF2BNB antibody [EPR14012] ab181872

Recombinant RabMAb

2 Images

Overview

Product name	Anti-MEF2BNB antibody [EPR14012]
Description	Rabbit monoclonal [EPR14012] to MEF2BNB
Host species	Rabbit
Tested applications	Suitable for: WB
Species reactivity	Reacts with: Human Predicted to work with: Mouse, Rat 
Immunogen	Recombinant fragment. This information is proprietary to Abcam and/or its suppliers.
Positive control	Human small intestine, prostate and skeletal muscle lysate
General notes	This product is a recombinant monoclonal antibody, which offers several advantages including: <ul style="list-style-type: none"> - High batch-to-batch consistency and reproducibility - Improved sensitivity and specificity - Long-term security of supply - Animal-free production For more information see here . Our RabMAb [®] technology is a patented hybridoma-based technology for making rabbit monoclonal antibodies. For details on our patents, please refer to RabMAb[®] patents .

Properties

Form	Liquid
Storage instructions	Shipped at 4°C. Store at +4°C short term (1-2 weeks). Upon delivery aliquot. Store at -20°C long term. Avoid freeze / thaw cycle.
Storage buffer	Preservative: 0.01% Sodium azide Constituents: 40% Glycerol (glycerin, glycerine), 59% PBS, 0.05% BSA
Purity	Tissue culture supernatant
Clonality	Monoclonal
Clone number	EPR14012
Isotype	IgG

Applications

The Abpromise guarantee

Our **Abpromise guarantee** covers the use of ab181872 in the following tested applications.

The application notes include recommended starting dilutions; optimal dilutions/concentrations should be determined by the end user.

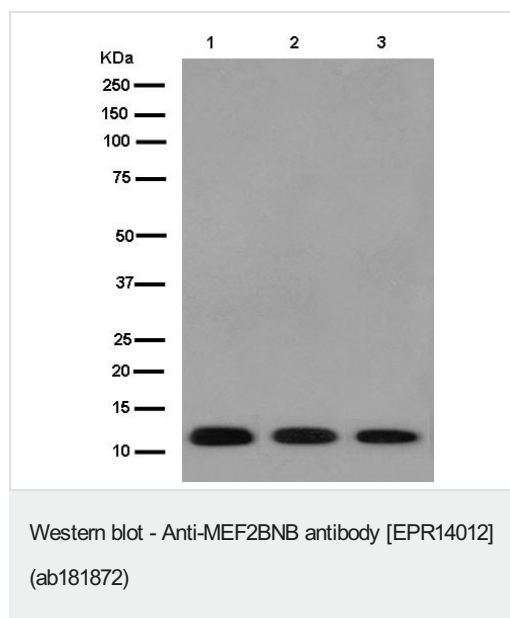
Application	Abreviews	Notes
WB		1/1000 - 1/10000. Detects a band of approximately 13 kDa (predicted molecular weight: 13 kDa).

Target

Sequence similarities

Belongs to the MEF2BNB family.

Images



All lanes : Anti-MEF2BNB antibody [EPR14012] (ab181872) at 1/10000 dilution

Lane 1 : Human small intestine tissue lysate

Lane 2 : Human prostate tissue lysate

Lane 3 : Human skeletal muscle tissue lysate

Lysates/proteins at 10 µg per lane.


Secondary

All lanes : Goat Anti-Rabbit IgG H&L (HRP) (**ab136636**) at 1/500 dilution

Predicted band size: 13 kDa

Observed band size: 13 kDa

Why choose a recombinant antibody?



- Research with confidence**
Consistent and reproducible results
- Long-term and scalable supply**
Recombinant technology
- Success from the first experiment**
Confirmed specificity
- Ethical standards compliant**
Animal-free production

Anti-MEF2BNB antibody [EPR14012] (ab181872)

Please note: All products are "FOR RESEARCH USE ONLY. NOT FOR USE IN DIAGNOSTIC PROCEDURES"

Our Abpromise to you: Quality guaranteed and expert technical support

- Replacement or refund for products not performing as stated on the datasheet
- Valid for 12 months from date of delivery
- Response to your inquiry within 24 hours
- We provide support in Chinese, English, French, German, Japanese and Spanish
- Extensive multi-media technical resources to help you
- We investigate all quality concerns to ensure our products perform to the highest standards

If the product does not perform as described on this datasheet, we will offer a refund or replacement. For full details of the Abpromise, please visit <https://www.abcam.com/abpromise> or contact our technical team.

Terms and conditions

- Guarantee only valid for products bought direct from Abcam or one of our authorized distributors