

Product datasheet

Anti-MEK4/MKK4 antibody [EP615Y] ab33912

KO **VALIDATED** Recombinant RabMAb

★★★★☆ 1 Abreviews 8 References 3 Images

Overview

Product name	Anti-MEK4/MKK4 antibody [EP615Y]
Description	Rabbit monoclonal [EP615Y] to MEK4/MKK4
Host species	Rabbit
Tested applications	Suitable for: WB Unsuitable for: ICC/IF
Species reactivity	Reacts with: Mouse, Rat, Human
Immunogen	Synthetic peptide within Human MEK4/MKK4 (C terminal). The exact sequence is proprietary. Database link: P45985
Positive control	WB: NIH/3T3 and HeLa whole cell lysates. Rat brain tissue lysate.
General notes	This product is a recombinant monoclonal antibody, which offers several advantages including: <ul style="list-style-type: none"> - High batch-to-batch consistency and reproducibility - Improved sensitivity and specificity - Long-term security of supply - Animal-free production For more information see here . Our RabMAb [®] technology is a patented hybridoma-based technology for making rabbit monoclonal antibodies. For details on our patents, please refer to RabMAb[®] patents .

Properties

Form	Liquid
Storage instructions	Shipped at 4°C. Store at +4°C short term (1-2 weeks). Upon delivery aliquot. Store at -20°C long term. Avoid freeze / thaw cycle.
Storage buffer	pH: 7.20 Preservative: 0.01% Sodium azide Constituents: 59% PBS, 40% Glycerol (glycerin, glycerine), 0.05% BSA
Purity	Protein A purified
Purification notes	ab33912 is a purified IgG.
Clonality	Monoclonal

Clone number EP615Y

Isotype IgG

Applications

The Abpromise guarantee Our **Abpromise guarantee** covers the use of ab33912 in the following tested applications. The application notes include recommended starting dilutions; optimal dilutions/concentrations should be determined by the end user.

Application	Abreviews	Notes
WB	★★★★☆ (1)	1/1000. Predicted molecular weight: 44 kDa.

Application notes Is unsuitable for ICC/IF.

Target

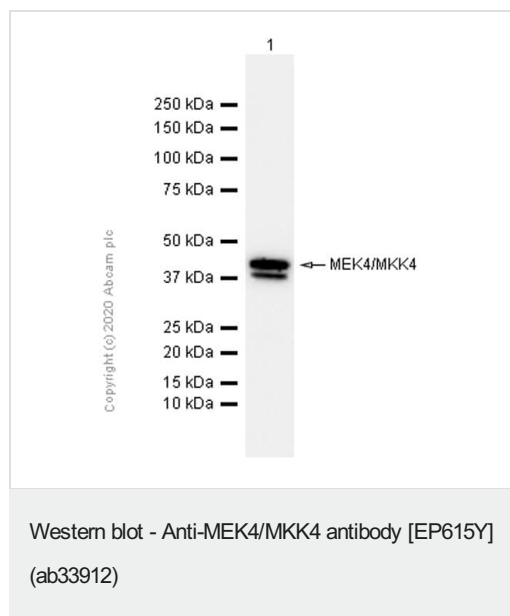
Function Dual specificity kinase that activates the JUN kinases MAPK8 (JNK1) and MAPK9 (JNK2) as well as MAPK14 (p38) but not MAPK1 (ERK2) or MAPK3 (ERK1).

Tissue specificity Abundant expression is seen in the skeletal muscle. It is also widely expressed in other tissues.

Sequence similarities Belongs to the protein kinase superfamily. STE Ser/Thr protein kinase family. MAP kinase kinase subfamily.
Contains 1 protein kinase domain.

Post-translational modifications Activated by phosphorylation on Ser/Thr by MAP kinase kinase kinases.

Images



Anti-MEK4/MKK4 antibody [EP615Y] (ab33912) at 1/1000 dilution
(Purified) + Rat brain lysate at 15 µg

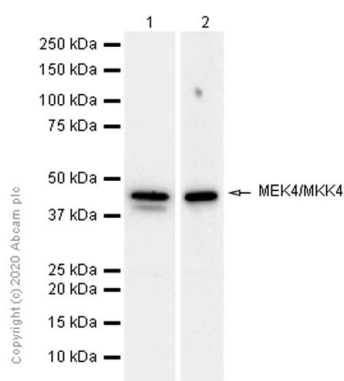
Secondary

Goat Anti-Rabbit IgG H&L (HRP) ([ab97051](#)) at 1/20000 dilution

Predicted band size: 44 kDa

Observed band size: 44 kDa

Blocking buffer: 5% NFDM/TBST



Western blot - Anti-MEK4/MKK4 antibody [EP615Y]
(ab33912)

All lanes : Anti-MEK4/MKK4 antibody [EP615Y] (ab33912) at 1/4000 dilution (Purified)

Lane 1 : NIH/3T3 (Mouse embryonic fibroblast) whole cell lysate

Lane 2 : HeLa (Human cervix adenocarcinoma epithelial cell) whole cell lysate

Lysates/proteins at 15 µg per lane.

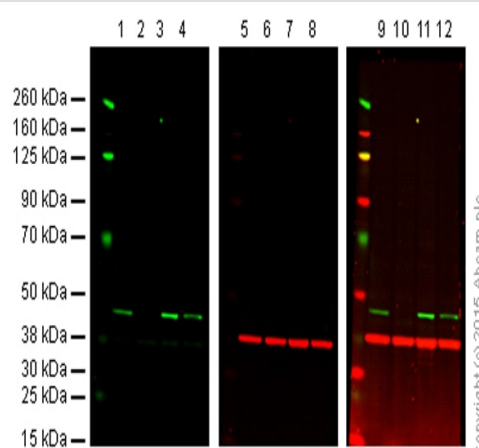
Secondary

All lanes : Goat Anti-Rabbit IgG H&L (HRP) ([ab97051](#)) at 1/20000 dilution

Predicted band size: 44 kDa

Observed band size: 44 kDa

Blocking buffer: 5% NFDM/TBST



Western blot - Anti-MEK4/MKK4 antibody [EP615Y]
(ab33912)

Lanes 1, 5 and 9: Wild-type HAP1 cell lysate (20 µg)

Lanes 2, 6 and 10: MEK4 knockout HAP1 cell lysate (20 µg)

Lanes 3, 7 and 11: HeLa cell lysate (20 µg)

Lanes 4, 8 and 12: A431 cell lysate (20 µg)

Lanes 1, 2, 3 and 4: Green signal from target - ab33912 observed at 44 kDa

Lanes 5, 6, 7 and 8: Red signal from loading control - [ab8245](#) observed at 37 kDa

Lanes 9, 10, 11 and 12: Merged (red and green) signal

ab33912 was shown to specifically react with MEK4 when MEK4 knockout samples were used. Wild-type and MEK4 knockout samples were subjected to SDS-PAGE. ab33912 and [ab8245](#) (loading control to GAPDH) were diluted 1/1000 and 1/2000 respectively and incubated overnight at 4°C. Blots were developed with Goat anti-Rabbit IgG H&L (IRDye® 800CW) preadsorbed ([ab216773](#)) and Goat anti-Mouse IgG H&L (IRDye® 680RD) preadsorbed ([ab216776](#)) secondary antibodies at 1/10 000 dilution for 1 h at room temperature before imaging.

Our Abpromise to you: Quality guaranteed and expert technical support

- Replacement or refund for products not performing as stated on the datasheet
- Valid for 12 months from date of delivery
- Response to your inquiry within 24 hours

- We provide support in Chinese, English, French, German, Japanese and Spanish
- Extensive multi-media technical resources to help you
- We investigate all quality concerns to ensure our products perform to the highest standards

If the product does not perform as described on this datasheet, we will offer a refund or replacement. For full details of the Abpromise, please visit <https://www.abcam.com/abpromise> or contact our technical team.

Terms and conditions

- Guarantee only valid for products bought direct from Abcam or one of our authorized distributors