




Product datasheet

Anti-MEPCE antibody - C-terminal ab185991

[1 References](#) [2 Images](#)

Overview

Product name	Anti-MEPCE antibody - C-terminal
Description	Rabbit polyclonal to MEPCE - C-terminal
Host species	Rabbit
Tested applications	Suitable for: IHC-P, IP
Species reactivity	Reacts with: Human Predicted to work with: Mouse, Rat, Horse, Chimpanzee, Rhesus monkey, Gorilla, Chinese hamster, Orangutan 
Immunogen	Synthetic peptide within Human MEPCE aa 600 to the C-terminus (C terminal). The exact immunogen sequence used to generate this antibody is proprietary information. If additional detail on the immunogen is needed to determine the suitability of the antibody for your needs, please contact our Scientific Support team to discuss your requirements. NP_062552.2. Database link: Q7L2J0  Run BLAST with  Run BLAST with
Positive control	IP: 293T whole cell lysate. IHC-P: Human ovarian carcinoma tissue.
General notes	<p>The Life Science industry has been in the grips of a reproducibility crisis for a number of years. Abcam is leading the way in addressing this with our range of recombinant monoclonal antibodies and knockout edited cell lines for gold-standard validation. Please check that this product meets your needs before purchasing.</p> <p>If you have any questions, special requirements or concerns, please send us an inquiry and/or contact our Support team ahead of purchase. Recommended alternatives for this product can be found below, along with publications, customer reviews and Q&As</p>

Properties

Form	Liquid
Storage instructions	Shipped at 4°C. Store at +4°C short term (1-2 weeks). Upon delivery aliquot. Store at -20°C long term. Avoid freeze / thaw cycle.
Storage buffer	pH: 7 Preservative: 0.09% Sodium azide Constituent: 99% Tris citrate/phosphate pH 7-8

Purity	Immunogen affinity purified
Purification notes	ab185991 was affinity purified using an epitope specific to MEPCE immobilized on solid support.
Clonality	Polyclonal
Isotype	IgG

Applications

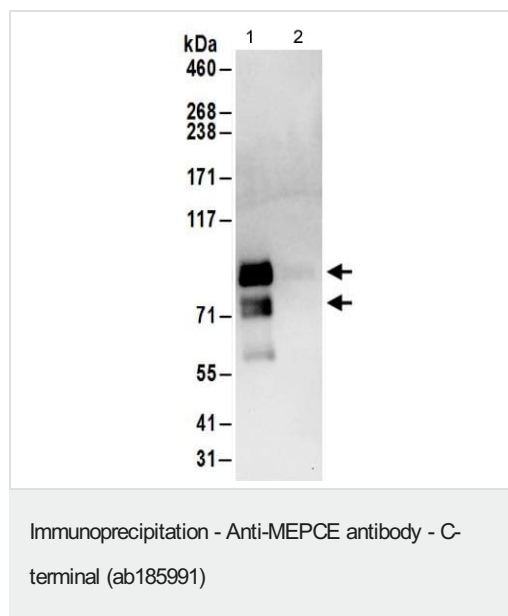
The Abpromise guarantee Our **Abpromise guarantee** covers the use of ab185991 in the following tested applications. The application notes include recommended starting dilutions; optimal dilutions/concentrations should be determined by the end user.

Application	Abreviews	Notes
IHC-P		1/500 - 1/2000. Perform heat mediated antigen retrieval with citrate buffer pH 6 before commencing with IHC staining protocol.
IP		Use at 2-10 µg/mg of lysate.

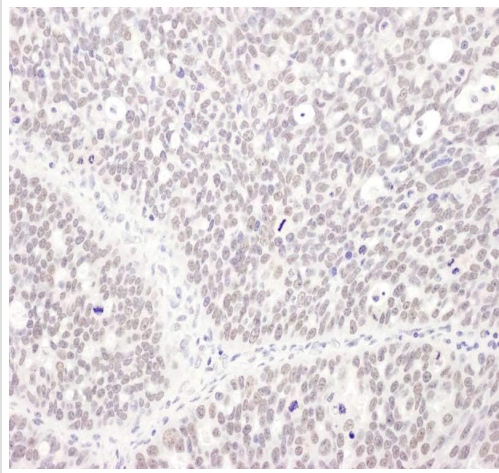
Target

Relevance MEPCE belongs to the methyltransferase superfamily and contains one BIN3 domain. It is an S-adenosyl-L-methionine-dependent methyltransferase that adds a methylphosphate cap at the 5'-end of 7SK snRNA, leading to stabilize it. MEPCE is expressed in chronic myeloid leukemia cells, adrenal gland, brain, cerebellum, kidney, lung, mammary gland and testis. It is weakly or not expressed in other tissues.

Images



Detection of MEPCE in Immunoprecipitates of 293T whole cell lysates (1 mg for IP, 20% of IP loaded) using ab185991 at 6 µg/mg lysate for IP (Lane 1). For WB detection an anti-MEPCE antibody was used at 1µg/ml. Lane 2 represents control IgG IP. Detection: Chemiluminescence with an exposure time of 10 seconds.



Immunohistochemistry analysis of formalin-fixed, paraffin-embedded human ovarian carcinoma tissue labeling MEPCE with ab185991 at a dilution of 1/1000.

Immunohistochemistry (Formalin/PFA-fixed paraffin-embedded sections) - Anti-MEPCE antibody - C-terminal (ab185991)

Please note: All products are "FOR RESEARCH USE ONLY. NOT FOR USE IN DIAGNOSTIC PROCEDURES"

Our Abpromise to you: Quality guaranteed and expert technical support

- Replacement or refund for products not performing as stated on the datasheet
- Valid for 12 months from date of delivery
- Response to your inquiry within 24 hours
- We provide support in Chinese, English, French, German, Japanese and Spanish
- Extensive multi-media technical resources to help you
- We investigate all quality concerns to ensure our products perform to the highest standards

If the product does not perform as described on this datasheet, we will offer a refund or replacement. For full details of the Abpromise, please visit <https://www.abcam.com/abpromise> or contact our technical team.

Terms and conditions

- Guarantee only valid for products bought direct from Abcam or one of our authorized distributors