

Product datasheet

Anti-Mesothelin antibody [EPR17823-52] ab187063

Recombinant RabMAb

5 Images

Overview

Product name	Anti-Mesothelin antibody [EPR17823-52]
Description	Rabbit monoclonal [EPR17823-52] to Mesothelin
Host species	Rabbit
Specificity	This antibody recognizes a different epitope of Mesothelin compared to ab213174 .
Tested applications	Suitable for: WB, IP, Flow Cyt (Intra) Unsuitable for: ICC/IF or IHC-P
Species reactivity	Reacts with: Mouse
Immunogen	Recombinant fragment. This information is proprietary to Abcam and/or its suppliers.
Positive control	WB: His-tagged mouse mesothelin fragment recombinant protein (aa298-600); NIH/3T3 whole cell lysate; Mouse lung and heart lysates; IP: NIH/3T3 whole cell lysate; Flow Cyt (intra): NIH/3T3 cells.
General notes	<p>This product is a recombinant monoclonal antibody, which offers several advantages including:</p> <ul style="list-style-type: none"> - High batch-to-batch consistency and reproducibility - Improved sensitivity and specificity - Long-term security of supply - Animal-free production <p>For more information see here.</p> <p>Our RabMAb[®] technology is a patented hybridoma-based technology for making rabbit monoclonal antibodies. For details on our patents, please refer to RabMAb[®] patents.</p>

Properties

Form	Liquid
Storage instructions	Shipped at 4°C. Store at +4°C short term (1-2 weeks). Upon delivery aliquot. Store at -20°C long term. Avoid freeze / thaw cycle.
Storage buffer	pH: 7.2 Preservative: 0.01% Sodium azide Constituents: 0.05% BSA, 40% Glycerol (glycerin, glycerine), PBS
Purity	Protein A purified
Clonality	Monoclonal

Clone number EPR17823-52

Isotype IgG

Applications

The Abpromise guarantee Our **Abpromise guarantee** covers the use of ab187063 in the following tested applications.

The application notes include recommended starting dilutions; optimal dilutions/concentrations should be determined by the end user.

Application	Abreviews	Notes
WB		1/1000. Detects a band of approximately 71, 40 kDa (predicted molecular weight: 69 kDa).
IP		1/30.
Flow Cyt (Intra)		1/500.

Application notes Is unsuitable for ICC/IF or IHC-P.

Target

Function Membrane-anchored forms may play a role in cellular adhesion.
Megakaryocyte-potentiating factor (MPF) potentiates megakaryocyte colony formation in vitro.

Tissue specificity Expressed in lung. Expressed at low levels in heart, placenta and kidney. Expressed in mesothelial cells. Highly expressed in mesotheliomas, ovarian cancers, and some squamous cell carcinomas (at protein level).

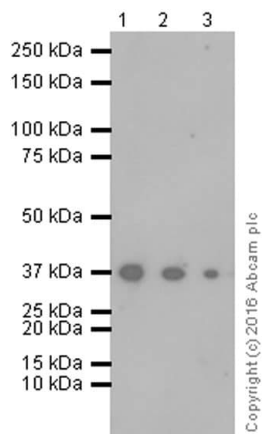
Involvement in disease Note=Antibodies against MSLN are detected in patients with mesothelioma and ovarian cancer.

Sequence similarities Belongs to the mesothelin family.

Post-translational modifications Both MPF and the cleaved form of mesothelin are N-glycosylated.
Proteolytically cleaved by a furin-like convertase to generate megakaryocyte-potentiating factor (MPF), and the cleaved form of mesothelin.

Cellular localization Secreted and Cell membrane. Golgi apparatus.

Images



Western blot - Anti-Mesothelin antibody [EPR17823-52] (ab187063)

Lane 1 : Anti-Mesothelin antibody [EPR17823-52] (ab187063) at 1/1000 dilution

Lane 2 : Anti-Mesothelin antibody [EPR17823-52] (ab187063) at 1/5000 dilution

Lane 3 : Anti-Mesothelin antibody [EPR17823-52] (ab187063) at 1/20000 dilution

All lanes : His-tagged mouse mesothelin fragment recombinant protein (aa298-600)

Lysates/proteins at 0.01 µg per lane.

Secondary

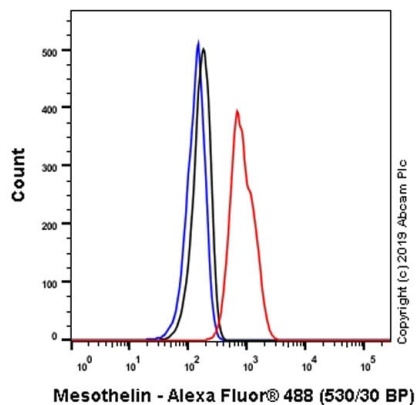
All lanes : Goat Anti-Rabbit IgG H&L (HRP) ([ab97051](#)) at 1/20000 dilution

Developed using the ECL technique.

Predicted band size: 69 kDa

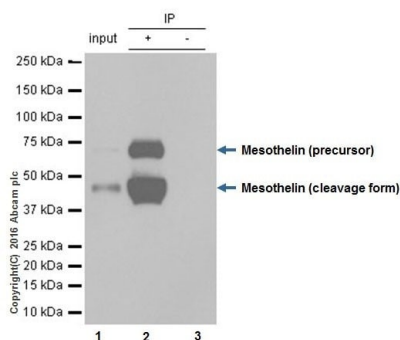
Observed band size: 40 kDa

Blocking/Dilution buffer: 5% NFDm/TBST.



Flow Cytometry (Intracellular) - Anti-Mesothelin antibody [EPR17823-52] (ab187063)

Intracellular Flow Cytometry analysis of NIH/3T3 (mouse embryo fibroblast cell line) cells labeling Mesothelin with ab187063 at 1/500. Cells were fixed with 4% paraformaldehyde and permeabilised with 90% methanol. Goat Anti-Rabbit IgG H&L (Alexa Fluor® 488) ([ab150077](#)) at 1/2000 was used as the secondary antibody (red). Rabbit monoclonal IgG ([ab172730](#)) was used as the isotype control (black). Blue - Unlabeled control, cells without incubation with primary and secondary antibodies.



Immunoprecipitation - Anti-Mesothelin antibody [EPR17823-52] (ab187063)

Mesothelin was immunoprecipitated from 1 mg of NIH/3T3 (mouse embryo fibroblast cell line) whole cell lysate with ab187063 at 1/30 dilution. Western blot was performed from the immunoprecipitate using ab187063 at 1/1000 dilution. VeriBlot for IP Detection Reagent (HRP) ([ab131366](#)), was used for detection at 1/10000 dilution.

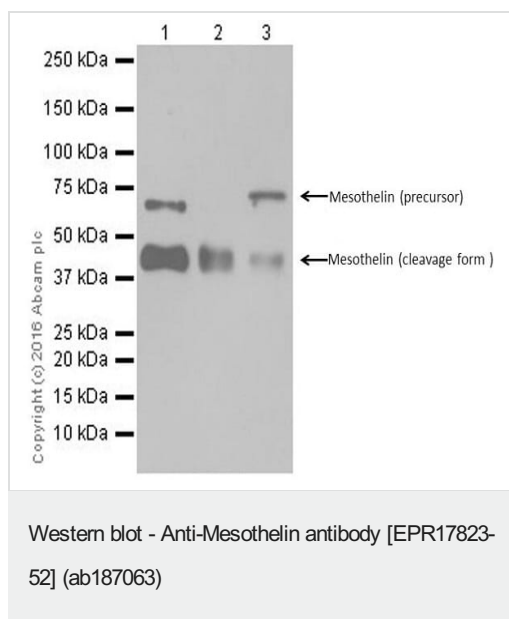
Lane 1: NIH/3T3 whole cell lysate 10 µg (Input).

Lane 2: ab187063 IP in NIH/3T3 whole cell lysate (+).

Lane 3: Rabbit monoclonal IgG ([ab172730](#)) instead of ab187063 in NIH/3T3 whole cell lysate (-).

Blocking and dilution buffer and concentration: 5% NFDm/TBST.

Exposure time: 3 minutes.



All lanes : Anti-Mesothelin antibody [EPR17823-52] (ab187063) at 1/1000 dilution

Lane 1 : NIH/3T3 (mouse embryo fibroblast cell line) whole cell lysate

Lane 2 : Mouse lung lysate

Lane 3 : Mouse heart lysate

Lysates/proteins at 10 µg per lane.

Secondary

All lanes : Goat Anti-Rabbit IgG Peroxidase Conjugate, specific to the non-reduced form of IgG at 1/10000 dilution

Developed using the ECL technique.

Predicted band size: 69 kDa

Observed band size: 40,71 kDa

Exposure time: 3 minutes

Blocking/Dilution buffer: 5% NFDm/TBST.

The expression profile observed is consistent with what has been described in the literature (PMID: 16857795; PMID: 17332303).

Why choose a recombinant antibody?



Research with confidence
Consistent and reproducible results



Long-term and scalable supply
Recombinant technology



Success from the first experiment
Confirmed specificity



Ethical standards compliant
Animal-free production

Anti-Mesothelin antibody [EPR17823-52] (ab187063)

Please note: All products are "FOR RESEARCH USE ONLY. NOT FOR USE IN DIAGNOSTIC PROCEDURES"

Our Abpromise to you: Quality guaranteed and expert technical support

- Replacement or refund for products not performing as stated on the datasheet
- Valid for 12 months from date of delivery
- Response to your inquiry within 24 hours
- We provide support in Chinese, English, French, German, Japanese and Spanish
- Extensive multi-media technical resources to help you
- We investigate all quality concerns to ensure our products perform to the highest standards

If the product does not perform as described on this datasheet, we will offer a refund or replacement. For full details of the Abpromise, please visit <https://www.abcam.com/abpromise> or contact our technical team.

Terms and conditions

- Guarantee only valid for products bought direct from Abcam or one of our authorized distributors