

Product datasheet

Anti-Mesothelin antibody [EPR4509] ab133489

Recombinant RabMAb

[5 References](#) [4 Images](#)

Overview

Product name	Anti-Mesothelin antibody [EPR4509]
Description	Rabbit monoclonal [EPR4509] to Mesothelin
Host species	Rabbit
Tested applications	Suitable for: WB, IHC-P, IP Unsuitable for: ICC/IF
Species reactivity	Reacts with: Human
Immunogen	Recombinant fragment. This information is proprietary to Abcam and/or its suppliers.
Positive control	Human fetal lung, Human breast cancer and HeLa lysates; Human serous ovarian carcinoma tissue IP: HeLa whole cell lysate.
General notes	<p>This product is a recombinant monoclonal antibody, which offers several advantages including:</p> <ul style="list-style-type: none"> - High batch-to-batch consistency and reproducibility - Improved sensitivity and specificity - Long-term security of supply - Animal-free production <p>For more information see here.</p> <p>Our RabMAb[®] technology is a patented hybridoma-based technology for making rabbit monoclonal antibodies. For details on our patents, please refer to RabMAb[®] patents.</p> <p>Mouse, Rat: We have preliminary internal testing data to indicate this antibody may not react with these species. Please contact us for more information.</p>

Properties

Form	Liquid
Storage instructions	Shipped at 4°C. Store at -20°C. Stable for 12 months at -20°C.
Storage buffer	pH: 7.2 Preservative: 0.01% Sodium azide Constituents: 59% PBS, 40% Glycerol (glycerin, glycerine), 0.5% BSA
Purity	Protein A purified
Clonality	Monoclonal

Clone number	EPR4509
Isotype	IgG

Applications

The Abpromise guarantee Our **Abpromise guarantee** covers the use of ab133489 in the following tested applications. The application notes include recommended starting dilutions; optimal dilutions/concentrations should be determined by the end user.

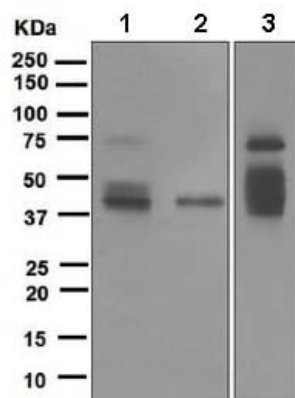
Application	Abreviews	Notes
WB		1/1000 - 1/10000. Predicted molecular weight: 69 kDa.
IHC-P		1/100 - 1/250. Perform heat mediated antigen retrieval with citrate buffer pH 6 before commencing with IHC staining protocol.
IP		1/40.

Application notes Is unsuitable for ICC/IF.

Target

Function	Membrane-anchored forms may play a role in cellular adhesion. Megakaryocyte-potentiating factor (MPF) potentiates megakaryocyte colony formation in vitro.
Tissue specificity	Expressed in lung. Expressed at low levels in heart, placenta and kidney. Expressed in mesothelial cells. Highly expressed in mesotheliomas, ovarian cancers, and some squamous cell carcinomas (at protein level).
Involvement in disease	Note=Antibodies against MSLN are detected in patients with mesothelioma and ovarian cancer.
Sequence similarities	Belongs to the mesothelin family.
Post-translational modifications	Both MPF and the cleaved form of mesothelin are N-glycosylated. Proteolytically cleaved by a furin-like convertase to generate megakaryocyte-potentiating factor (MPF), and the cleaved form of mesothelin.
Cellular localization	Secreted and Cell membrane. Golgi apparatus.

Images



Western blot - Anti-Mesothelin antibody [EPR4509] (ab133489)

All lanes : Anti-Mesothelin antibody [EPR4509] (ab133489) at 1/1000 dilution

Lane 1 : Human fetal lung lysate

Lane 2 : Human breast cancer lysate

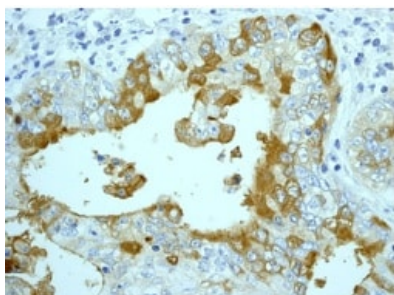
Lane 3 : HeLa lysate

Lysates/proteins at 10 µg per lane.

Secondary

All lanes : HRP labelled goat anti-rabbit at 1/2000 dilution

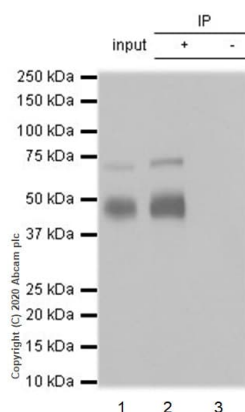
Predicted band size: 69 kDa



Immunohistochemistry (Formalin/PFA-fixed paraffin-embedded sections) - Anti-Mesothelin antibody [EPR4509] (ab133489)

Immunohistochemical analysis of Mesothelin in paraffin embedded Human serous ovarian carcinoma tissue, using ab133489 at a dilution of 1/100.

Perform heat mediated antigen retrieval with citrate buffer pH 6 before commencing with IHC staining protocol.



Immunoprecipitation - Anti-Mesothelin antibody [EPR4509] (ab133489)

Purified ab133489 at 1/40 dilution (2µg) immunoprecipitating Mesothelin in HeLa whole cell lysate.

Lane 1 (input): HeLa (Human cervix adenocarcinoma epithelial cell) whole cell lysate 10µg

Lane 2 (+): ab133489 + HeLa whole cell lysate.

Lane 3 (-): Rabbit monoclonal IgG (**ab172730**) instead of ab133489 in HeLa whole cell lysate.

VeriBlot for IP Detection Reagent (HRP) (**ab131366**) (1/1000 dilution) was used for Western blotting.

Blocking Buffer and concentration: 5% NFDm/TBST.

Diluting buffer and concentration: 5% NFDm/TBST.

Observed band size: 40, 71 kDa

The expression profile observed is consistent with what has been described in the literature (PMID: 16857795; PMID: 17332303).

Why choose a recombinant antibody?



Research with confidence
Consistent and reproducible results



Long-term and scalable supply
Recombinant technology



Success from the first experiment
Confirmed specificity



Ethical standards compliant
Animal-free production

Anti-Mesothelin antibody [EPR4509] (ab133489)

Please note: All products are "FOR RESEARCH USE ONLY. NOT FOR USE IN DIAGNOSTIC PROCEDURES"

Our Abpromise to you: Quality guaranteed and expert technical support

- Replacement or refund for products not performing as stated on the datasheet
- Valid for 12 months from date of delivery
- Response to your inquiry within 24 hours
- We provide support in Chinese, English, French, German, Japanese and Spanish
- Extensive multi-media technical resources to help you
- We investigate all quality concerns to ensure our products perform to the highest standards

If the product does not perform as described on this datasheet, we will offer a refund or replacement. For full details of the Abpromise, please visit <https://www.abcam.com/abpromise> or contact our technical team.

Terms and conditions

- Guarantee only valid for products bought direct from Abcam or one of our authorized distributors